

219



W  
WHITES

## 219, Whitsbury Road, Odstock, SP5 4JE

Charming detached cottage in a village with modern interiors, garden, parking, and storage. Unfurnished long-term rental available.

- Detached character cottage
- Three bedrooms
- Fully redecorated
- Fully recarpeted
- Close to the hospital
- Ample parking
- Walking distance to a public house
- Popular village location
- Large garden
- Oil central heating

£1,500 PCM





## About The Property

A delightful detached cottage located in a popular village. The property has just undergone full redecoration and new carpeting. The layout includes a front door leading to a small entrance hallway with a staircase. From there, you enter the lounge, which features a working log burner and views over the main garden.

Adjacent to the lounge is a modern kitchen/diner equipped with a new electric freestanding cooker. Off the kitchen, you'll find a downstairs WC and a well-proportioned utility room with space for a washing machine.

The upstairs accommodation consists of a large primary bedroom with views over the garden, two additional double bedrooms, and a family bathroom with an electric shower over the bath.

Outside, the property is accessed via a small private driveway that provides ample parking for multiple cars. There is a large lawned garden that wraps around the side and rear of the property. Additionally, there is a good-sized built-in storage cupboard to the side of the house, which houses the oil-fired boiler and hot water cylinder while still leaving room for extra storage. A timber shed located in the corner of the garden is suitable for log storage and garden tools.

The property is offered unfurnished for long-term rental.



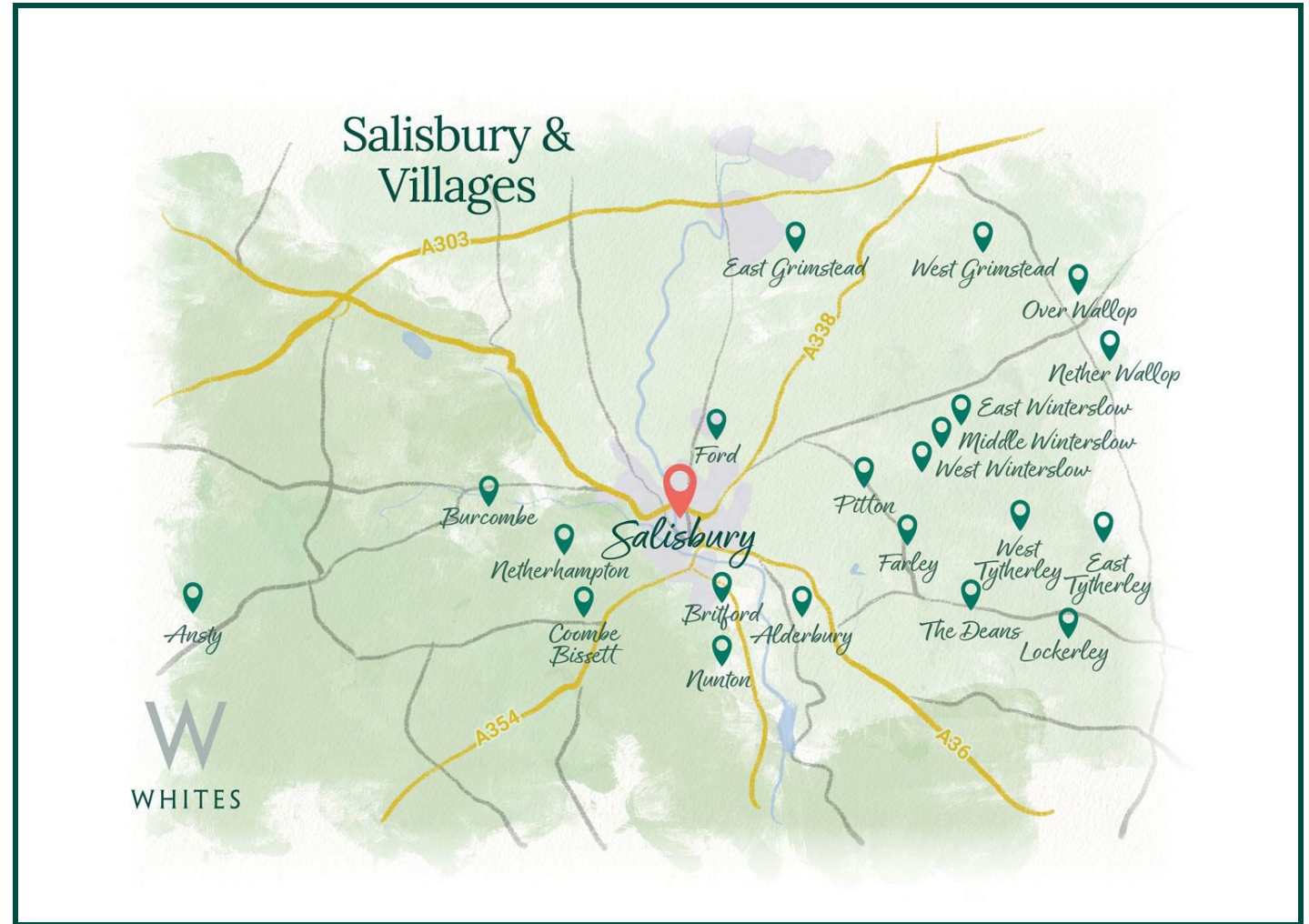


## Location

Odstock is a small, attractive village nestled in the Ebble Valley on the edge of Salisbury, surrounded by scenic countryside and ancient downland. The nearby Lime Kiln Down is a Site of Special Scientific Interest, home to a rich diversity of rare plants, butterflies, and birdlife, making the area a haven for nature lovers and walkers.

The village itself is peaceful and picturesque, with several historic buildings, including the 17th Century Odstock Manor. At its heart is the charming thatched Yew Tree Inn, a traditional country pub known for its warm welcome, home-cooked food and well-kept ales.

A strong sense of rural community complements its close proximity to the historic city of Salisbury, while the surrounding landscape offers quiet lanes, river walks and open views across Wiltshire's rolling countryside. This is an ideal setting for those seeking village life within easy reach of cultural and everyday amenities.



## Key Information

### Local Authority:

Wiltshire Council

### Council Tax:

Band: D

### Property Type:

Character Property - Detached

### Floor Area:



1139.50 sq ft

### Let Available Date:

19th June 2026 NB: This date is provisional and will only be confirmed once referencing has been successfully

### Furnish Type:

Unfurnished

### Deposit:

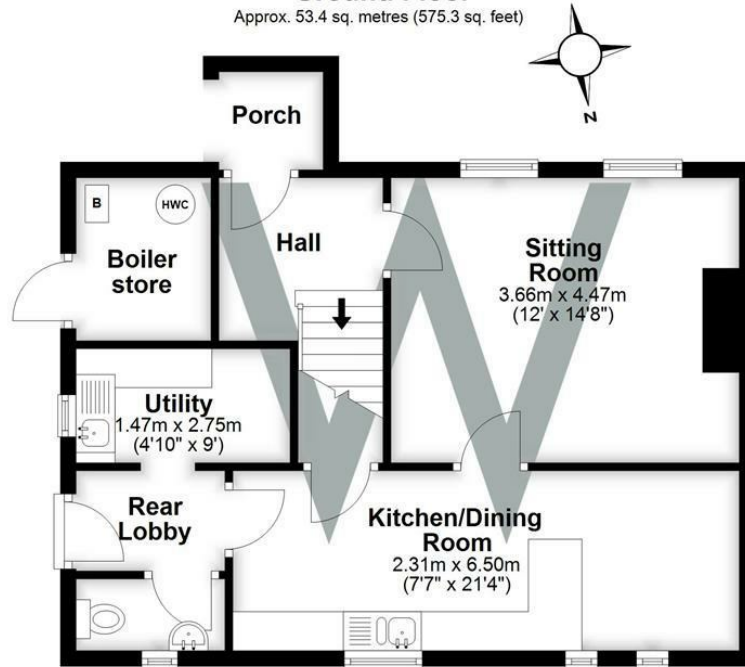
£1,730

### EPC:

| Energy Efficiency Rating                           |  | Current                 | Potential |
|--|--|-------------------------|-----------|
| <i>Very energy efficient - lower running costs</i> |  |                         |           |
| (92 plus) A  |  |                         | 100       |
| (81-91) B  |  |                         |           |
| (69-80) C  |  |                         |           |
| (55-68) D  |  |                         |           |
| (39-54) E  |  | 45                      |           |
| (21-38) F  |  |                         |           |
| (1-20) G   |  |                         |           |
| <i>Not energy efficient - higher running costs</i> |  |                         |           |
| England & Wales                                    |  | EU Directive 2002/91/EC |           |

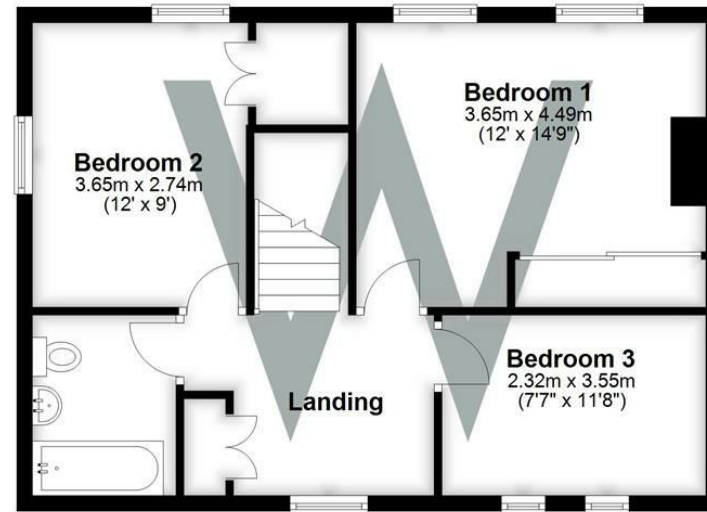
### Ground Floor

Approx. 53.4 sq. metres (575.3 sq. feet)



### First Floor

Approx. 52.4 sq. metres (564.2 sq. feet)



Total area: approx. 105.9 sq. metres (1139.5 sq. feet)