



Chaucer Way, SW19

£425,000

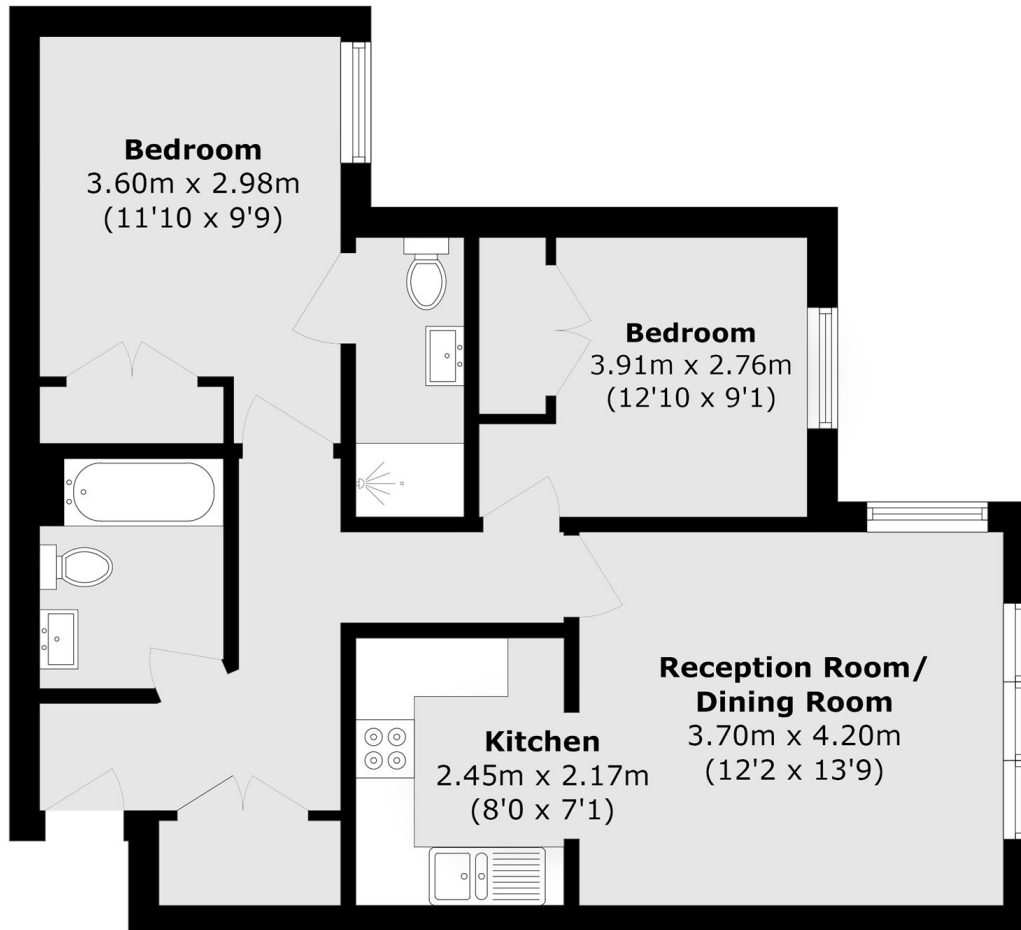
A two double bedroom, two bathroom, first floor purpose built apartment. The flat has been renovated to an exceptional standard throughout, with an allocated and visitors spaces.

Located behind electric gates, near to green open spaces including Wandle Park and the Wandle Meadow Nature Park but also with easy access to Colliers Wood Station (Northern Line).

Features

- Two Double Bedrooms
- Two Bathrooms
- Fully Renovated
- Allocated Parking
- Gated Development
- First Floor

Chaucer Way, London, SW19



Total area (approx.): 62.3 sq. m (670.5 sq. ft)