



Taylor Close, TW3

£420,000

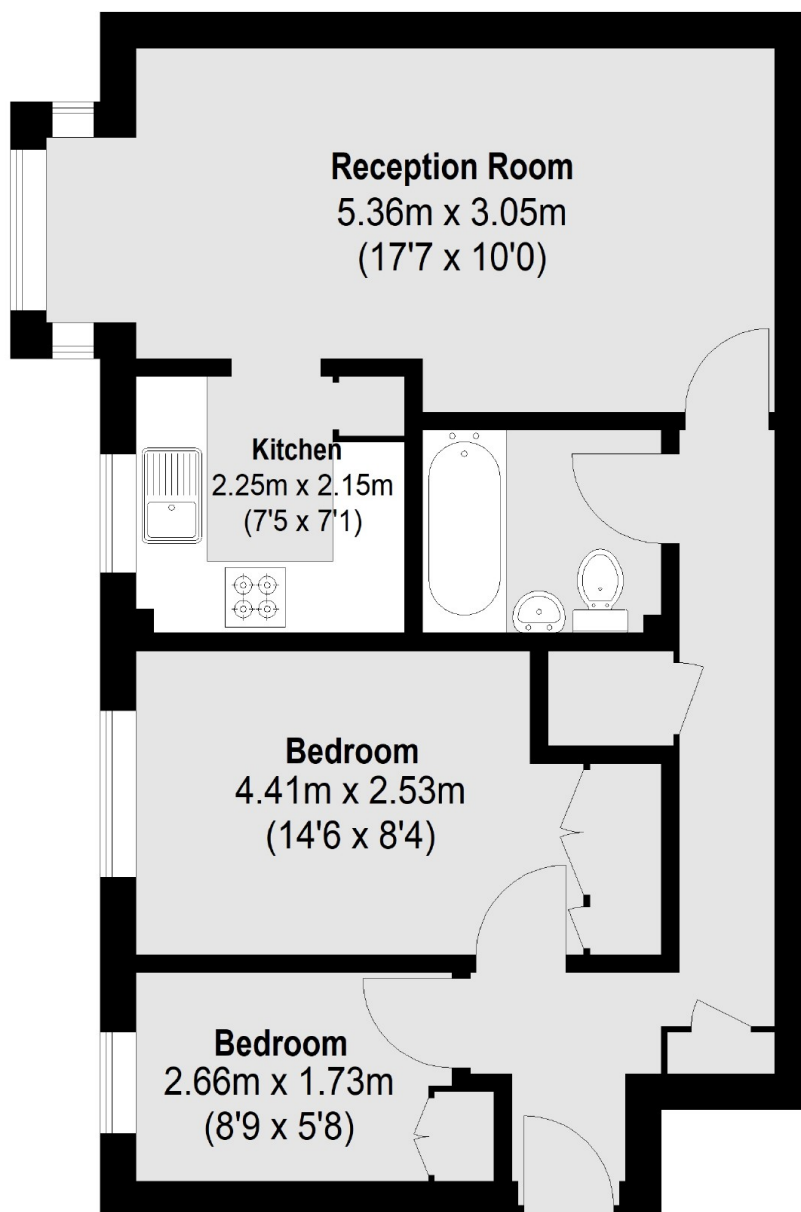
A purpose built two bedroom apartment situated on the ground floor of a highly popular development. The property benefits from allocated parking, communal gardens and no onward chain.

Conveniently situated for local amenities, schools and parks. Both Osterley (tube) and Isleworth train stations are within short walking distance and offer excellent transport links in and out of London.

Features

Ground Floor Apartment
Two Bedrooms
Allocated Parking
Communal Gardens
No Onward Chain
Close To Amenities

Taylor Close, Hounslow, TW3



Ground Floor

Total area (approx.): 51.03 sq. m (549 Sq. ft)

Dexters

Isleworth
568 London Road
Isleworth
TW7 4EP
Sales
020 8560 1177

Energy Rating: TBC. We aim to make our particulars both accurate and reliable. However they are not guaranteed; nor do they form part of an offer or contract. If you require clarification on any points then please contact us, especially if you're traveling some distance to view. Please note that appliances and heating systems have not been tested and therefore no warranties can be given as to their good working order.

 **RICS** | Regulated
Estate Agent
and Letting Agent

[dexters.co.uk](https://www.dexters.co.uk)