




LANG TOWN
& COUNTRY
SALES

24 Limeburners Road, Hooe, Plymouth, Devon, PL9 9FL


LANG TOWN
& COUNTRY
SALES

Price £300,000

Situated on the highly sought-after Reflections development, on the banks of Hooe Lake, this beautifully presented three-storey end-terrace home offers spacious and versatile accommodation ideal for modern family living.

The ground floor comprises a well-appointed kitchen/diner, perfect for both everyday living and entertaining, along with a flexible study which can also serve as a fourth bedroom, and a convenient WC.

On the first floor, you will find a bright and airy lounge featuring a Juliet balcony, allowing natural light to flood the space, alongside the generous master bedroom complete with its own en-suite shower room.

The second-floor hosts two further well-proportioned double bedrooms and a contemporary three-piece family bathroom suite, providing ample space for family or guests.

Externally, the property benefits from its end-terrace position, offering additional privacy and appeal. The low maintenance rear garden has an artificial lawn, and a timber decked seating are providing a safe environment for children to play. There are also two allocated parking spaces.

Ideally located, the home is perfectly positioned to enjoy the wide range of local amenities available in Hooe, as well as the stunning nearby coastline, including the popular areas of Jennycliff and Mount Batten ideal for coastal walks, water activities, and enjoying the surrounding natural beauty.



To view this property call Lang Town & Country Estate Agents on **01752 456000**

www.langtownandcountry.com



LANG TOWN
& COUNTRY
SALES



LANG TOWN
& COUNTRY
SALES

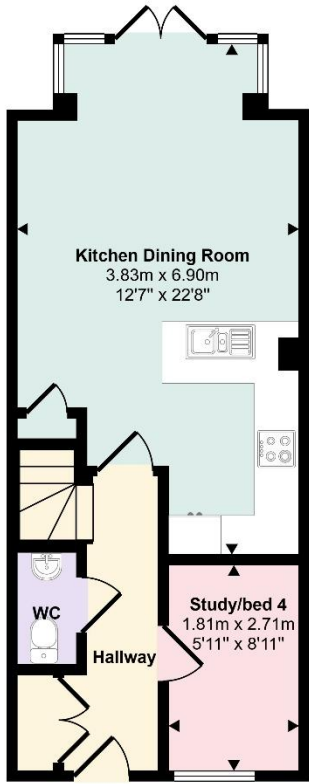


LANG TOWN
& COUNTRY
SALES

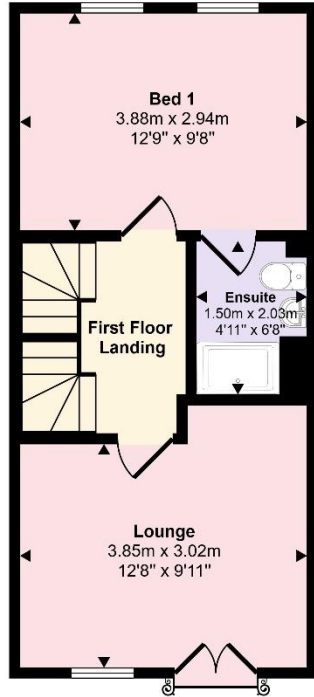


LANG TOWN
& COUNTRY
SALES

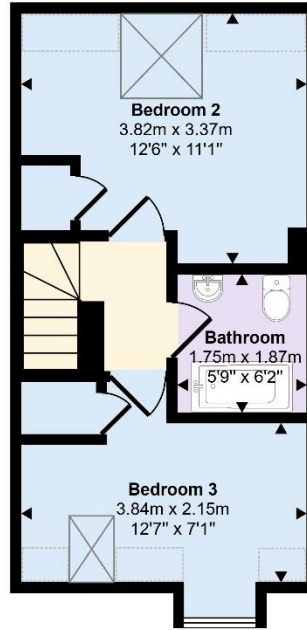
Approx Gross Internal Area
101 sq m / 1082 sq ft



Ground Floor
Approx 37 sq m / 394 sq ft



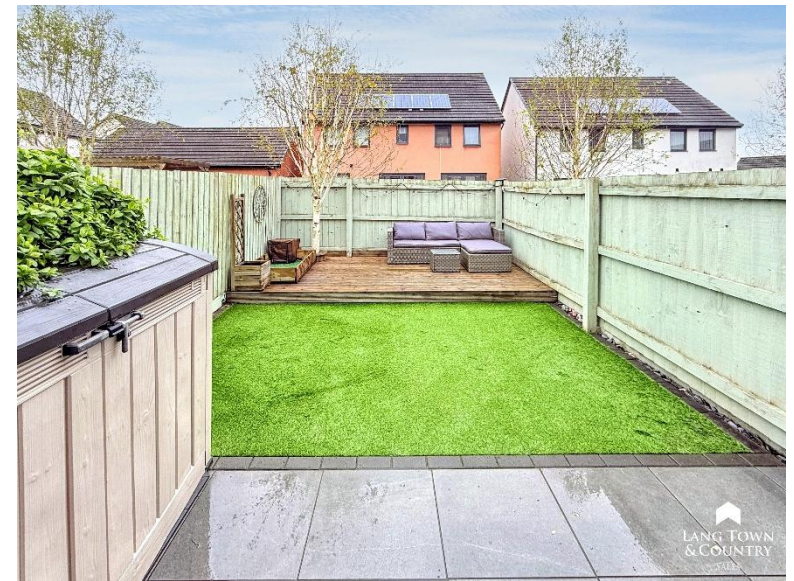
First Floor
Approx 34 sq m / 367 sq ft



Second Floor
Approx 30 sq m / 322 sq ft

Denotes head height below 1.5m

This floorplan is only for illustrative purposes and is not to scale. Measurements of rooms, doors, windows, and any items are approximate and no responsibility is taken for any error, omission or mis-statement. Icons of items such as bathroom suites are representations only and may not look like the real items. Made with Made Snappy 360.



Lang Town & Country
6 The Broadway
Plymouth
PL9 7AU
Tel: 01752 456000
Email: plymstock@langtownandcountry.com
www.langtownandcountry.com

Lang Town & Country endeavour to ensure the accuracy of property details produced and displayed, we have not tested any apparatus, equipment, fixtures, fittings or services and so cannot verify that they are connected, in working order or fit for purpose. A buyer must check the availability of any property and make an appointment to view before embarking on any journey to see a property.

