

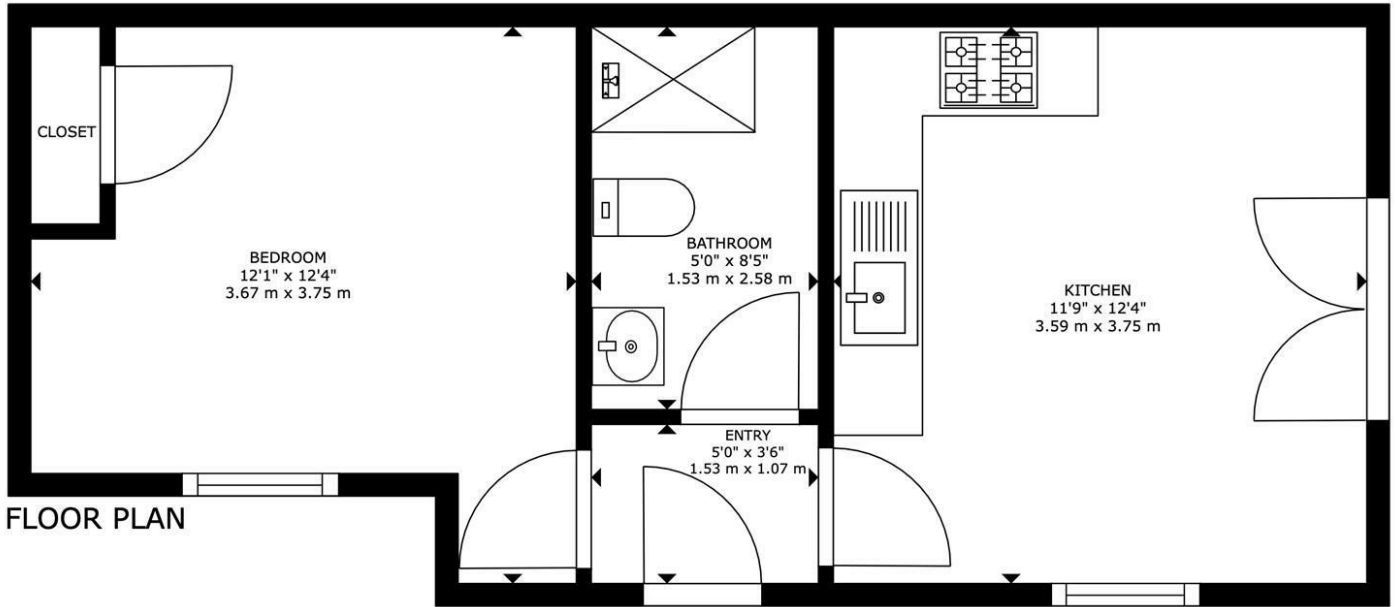


41 BRIGHTON ROAD HORSHAM

£200,000
LEASEHOLD

- MODERN ONE BEDROOM GROUND FLOOR FLAT IN HIGHLY SOUGHT AFTER LOCATION
- MODERN KITCHEN WITH INTEGRATED APPLIANCES
- SPACIOUS DOUBLE BEDROOM WITH BUILT IN WARDROBES
- PART OF AN EXCLUSIVE DEVELOPMENT OF 5 APARTMENTS
- DECKED OUTDOOR COURTYARD
- ATTRACTIVE BATHROOM WITH LARGE WALK IN SHOWER
- WALKING DISTANCE TO LOCAL AMENITIES AND HORSHAM TRAIN STATION





ELTONS

Estate Agents

GROSS INTERNAL AREA
FLOOR PLAN: 340 sq. ft, 31 m²
SIZES AND DIMENSIONS ARE APPROXIMATE, ACTUAL MAY VARY.



Energy Efficiency Rating		
	Current	Potential
Very energy efficient - lower running costs		
(92 plus) A		
(81-91) B		
(69-80) C		
(55-68) D	56	56
(39-54) E		
(21-38) F		
(1-20) G		
Not energy efficient - higher running costs		
England & Wales	EU Directive 2002/91/EC	

Agents Note: Whilst every care has been taken to prepare these particulars, they are for guidance purposes only. All measurements are approximate and are for general guidance purposes only and whilst every care has been taken to ensure their accuracy, they should not be relied upon and potential buyers/tenants are advised to recheck the measurements

Eltons Estate Agents Horsham 01403 299 771
13 - 15 Queen Street sales@eltons.co.uk
Horsham eltons.co.uk
West Sussex
RH13 5AA

ELTONS
Estate Agents