



Connells

John Dutton Way
Kennington Ashford



Property Description

Located on the highly desirable Little Burton development, this beautifully presented four bedroom detached home on John Dutton Way offers generous living space, modern features, and a layout perfectly suited to growing families.

Set on a quiet residential road, the property boasts an impressive driveway leading to an integral garage, providing ample off-road parking. Inside, the ground floor offers a welcoming lounge, a separate dining room, a modern kitchen, and a cloakroom for added convenience.

Upstairs, all four bedrooms are generously sized doubles, offering flexibility for families, guests, or home working. The main bedroom benefits from a private en-suite, while bedrooms 2 and 3 share a stylish Jack & Jill en-suite, and a further family bathroom serves the rest of the home.

To the rear, the garden offers a great balance of space and usability, with a patio area ideal for entertaining and a well-maintained lawn perfect for children or pets.

Located on the highly desirable Little Burton development, this beautifully presented four bedroom detached home on John Dutton Way offers generous living space, modern features, and a layout perfectly suited to growing families.

Set on a quiet residential road, the property boasts an impressive driveway leading to an integral garage, providing ample off-road parking. Inside, the ground floor offers a welcoming lounge, a separate dining room, a modern kitchen, and a cloakroom for added convenience.

Upstairs, all four bedrooms are generously sized doubles, offering flexibility for families, guests, or home working. The main bedroom benefits from a private en-suite, while bedrooms 2 and 3 share a stylish Jack & Jill en-suite, and a further family bathroom serves

the rest of the home.

To the rear, the garden offers a great balance of space and usability, with a patio area ideal for entertaining and a well-maintained lawn perfect for children or pets.

Located on the highly desirable Little Burton development, this beautifully presented four bedroom detached home on John Dutton Way offers generous living space, modern features, and a layout perfectly suited to growing families.

Set on a quiet residential road, the property boasts an impressive driveway leading to an integral garage, providing ample off-road parking. Inside, the ground floor offers a welcoming lounge, a separate dining room, a modern kitchen, and a cloakroom for added convenience.

Upstairs, all four bedrooms are generously sized doubles, offering flexibility for families, guests, or home working. The main bedroom benefits from a private en-suite, while bedrooms 2 and 3 share a stylish Jack & Jill en-suite, and a further family bathroom serves the rest of the home.

To the rear, the garden offers a great balance of space and usability, with a patio area ideal for entertaining and a well-maintained lawn perfect for children or pets.

Located on the highly desirable Little Burton development, this beautifully presented four bedroom detached home on John Dutton Way offers generous living space, modern features, and a layout perfectly suited to growing families.

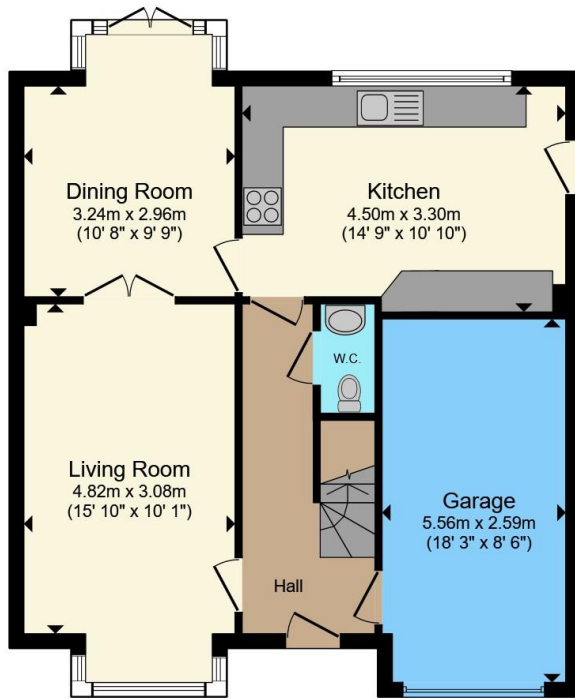
Set on a quiet residential road, the property boasts an impressive driveway leading to an integral garage,

providing ample off-road parking. Inside, the ground floor offers a welcoming lounge, a separate dining room, a modern kitchen, and a cloakroom for added convenience.

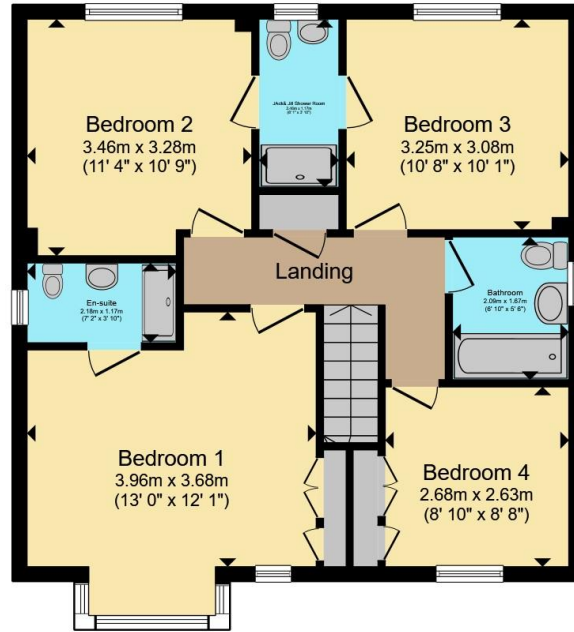
Upstairs, all four bedrooms are generously sized doubles, offering flexibility for families, guests, or home working. The main bedroom benefits from a private en-suite, while bedrooms 2 and 3 share a stylish Jack & Jill en-suite, and a further family bathroom serves the rest of the home.

To the rear, the garden offers a great balance of space and usability, with a patio area ideal for entertaining and a well-maintained lawn perfect for children or pets.





Ground Floor



First Floor

Total floor area 132.2 m² (1,423 sq.ft.) approx

This floor plan is for illustrative purposes only. It is not drawn to scale. Any measurements, floor areas (including any total floor area), openings and orientation are approximate. No details are guaranteed, they cannot be relied upon for any purpose and they do not form part of any agreement. No liability is taken for any error, omission or misstatement. A party must rely upon its own inspection(s). Powered by www.propertybox.io



To view this property please contact Connells on

T 01233 622206
E ashford@connells.co.uk

77 High Street
ASHFORD TN24 8SF

EPC Rating: C Council Tax
Band: F

view this property online connells.co.uk/Property/ASH408712

Tenure: Freehold



1. MONEY LAUNDERING REGULATIONS Intending purchasers will be asked to produce identification documentation at a later stage and we would ask for your co-operation in order that there will be no delay in agreeing the sale. 2. These particulars do not constitute part or all of an offer or contract. 3. The measurements indicated are supplied for guidance only and as such must be considered incorrect. Potential buyers are advised to recheck measurements before committing to any expense. 4. We have not tested any apparatus, equipment, fixtures, fittings or services and it is in the buyers interest to check the working condition of any appliances.

Connells Residential is registered in England and Wales under company number 1489613, Registered Office is Cumbria House, 16-20 Hockliffe Street, Leighton Buzzard, Bedfordshire, LU7 1GN. VAT Registration Number is 500 2481 05.

See all our properties at www.connells.co.uk | www.rightmove.co.uk | www.zoopla.co.uk

Property Ref: ASH408712 - 0010