



MALLINSON
& CO

INNOVATIVE PROPERTY EXPERTS

Long Furlong, Penistone, Barnsley, S36 6FF

Offers Over £295,000

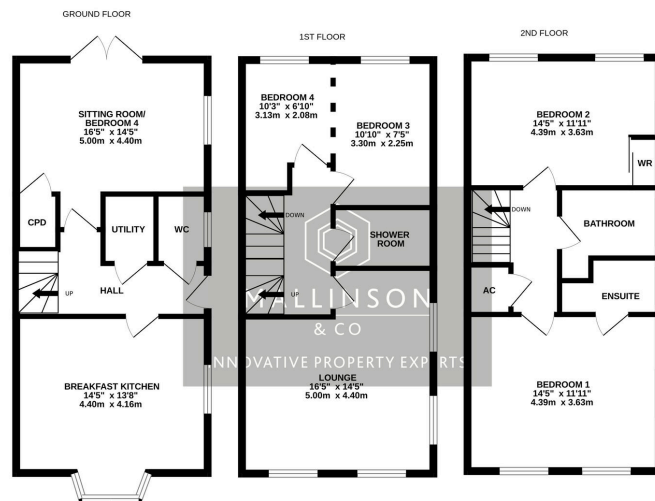
🛏 4 🚿 3 🛋 2



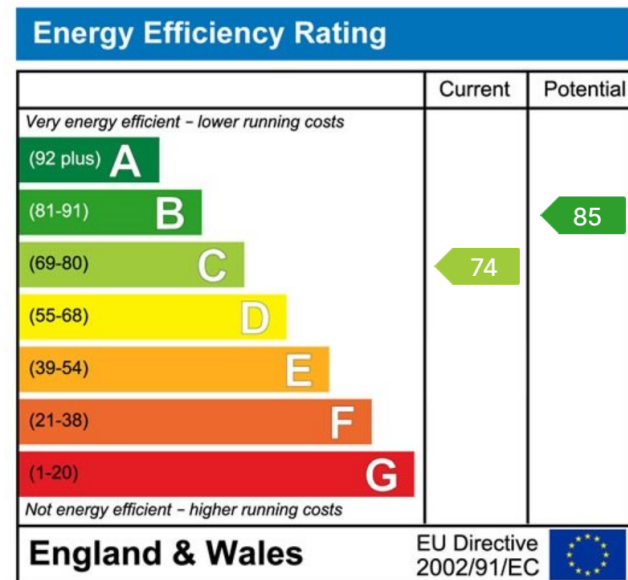
- END TOWNHOUSE ON A LARGE PLOT
- SPACIOUS ACCOMMODATION
- EN SUITE & 2 BATH/SHOWER ROOMS
- ENCLOSED REAR GARDEN
- CLOSE TO LOCAL AMENITIES, SCHOOLS & TRANSPORT LINKS
- 4 BEDROOMS
- MODERN CONTEMPORARY FINISH THROUGHOUT
- GARAGE & OFF STREET PARKING
- CLOSE TO PENNINE TRAIL
- AN IDEAL FAMILY HOME



TAKE A LOOK AT THIS ... SITUATED WITHIN A POPULAR AND MODERN DEVELOPMENT, THIS WELL PRESENTED FOUR BEDROOM END TOWN HOUSE OFFERS VERSATILE AND WELL-PROPORTIONED LIVING SPACE ARRANGED OVER THREE FLOORS, PROVIDING A SUPERB FAMILY HOME WITH MODERN FIXTURES AND FITTINGS, AND A PRIVATE ENCLOSED REAR GARDEN. IDEALLY SUITED TO THE GROWING FAMILY OR PROFESSIONAL COUPLE, THE HOME ENJOYS A CONVENIENT LOCATION CLOSE TO LOCAL AMENITIES, SCHOOLS, AND COMMUTER LINKS, INCLUDING EASY ACCESS TO THE M1 MOTORWAY NETWORK.



TOTAL FLOOR AREA: 1366 sq.ft. (126.9 sq.m.) approx.
While every attempt has been made to ensure the accuracy of the floorplan contained here, measurements of doors, windows, rooms and any other items are approximate and no responsibility is taken for any error, omission or mis-statement. This plan is for illustrative purposes only and should be used as such by any prospective purchaser. The services, systems and appliances shown have not been tested and no guarantee as to their operability or efficiency can be given.
Made with Metropac ©2020



INNOVATIVE
PROPERTY
EXPERTS

Mallinson & Co

Office: 01226 414 150

Email: ben@mallinsonandco.co.uk

Web: www.mallinsonandco.co.uk

Suite 6, Penistone 1, St. Mary's Street, Penistone, S36 6DT