



Melbourne Grove, SE22 | £1,900,000

02087028222

[eastdulwich@pedderproperty.com](mailto:eastdulwich@pedderproperty.com)

**pedder**  
We live local



# In General

- Five double bedrooms
- Two bathrooms
- 50-ft west-facing garden
- Over 2,150 Sq Ft
- Excellent condition throughout
- Desirable, residential road
- Garden room/studio

# In Detail

Stunning, spacious and beautifully-bright five bedroom family home on this desirable, residential street in the heart of East Dulwich, SE22.

Melbourne Grove is enviably-located for the excellent primary, secondary and independent schools nearby as well as the gorgeous parks and green spaces - including Goose Green and Dulwich Park.

There are a host of independent shops, bars, restaurants and coffee shops on Lordship Lane, North Cross Road and Bellenden Road. Benefitting from strong transport links into The City and West End from East Dulwich station (0.3 miles) and Denmark Hill station (1 mile) as well as the bus/cycle routes through the neighbouring Dulwich Village, Herne Hill and Peckham Rye.

Boasting over 2,150 Sq Ft of internal space, the semi-detached Victorian house has been lovingly maintained by the current owner. There is a sumptuous 33-ft kitchen-breakfast room that opens out through bifolding doors onto the 50-ft west-facing garden which has a garden room/studio. There is a beautiful 24-ft bay-fronted double reception with period features. Upstairs are five comfortable double bedrooms; including the 17-ft principal bedroom and the 19x17 ft loft-bedroom with an en-suite shower room.

Early viewing recommended.

EPC: D | Council tax band: F



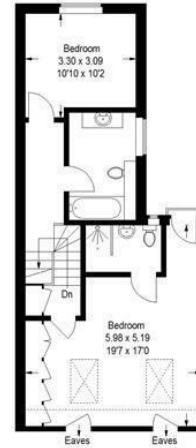
# Floorplan

## Melbourne Grove SE22

Approximate Gross Internal Area  
 (Excluding Studio / Garden House)  
 Ground Floor = 87.6 sq m / 942 sq ft  
 First Floor = 60.7 sq m / 653 sq ft  
 Top Floor = 52.6 sq m / 565 sq ft  
 Total = 200.7 sq m / 2160 sq ft



Ground Floor



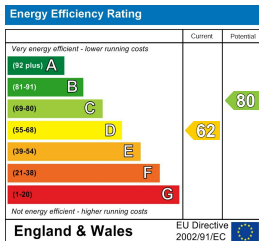
Top Floor



First Floor

Reduced headroom below 1.5 m / 5'0"

Copyright www.pedderproperty.com © 2022  
 These plans are for representation purposes only as defined by RICS - Code of Measuring Practice.  
 Not drawn to Scale. Windows and door openings are approximate. Please check all dimensions, shapes and compass bearings before making any decisions reliant upon them.



Pedder Property Ltd trading as Pedder for themselves and for the vendor/landlord of this property whose agents they are, give notice that (1) these particulars do not constitute any part of an offer or contract, (2) all statements contained within these particulars are made without responsibility on the part of Pedder or the vendor/landlord, (3) whilst made in good faith, none of the statements contained within these particulars are to be relied upon as a statement of representation or fact, (4) any intending purchaser/tenant must satisfy him/herself by inspection or otherwise as to the correctness of each of the statements contained within these particulars, (5) the vendor/landlord does not make or give either Pedder or any person in their employment any authority to make or give representation or warranty whatsoever in relation to this property.