



## Effingham Road, KT6

£475,000

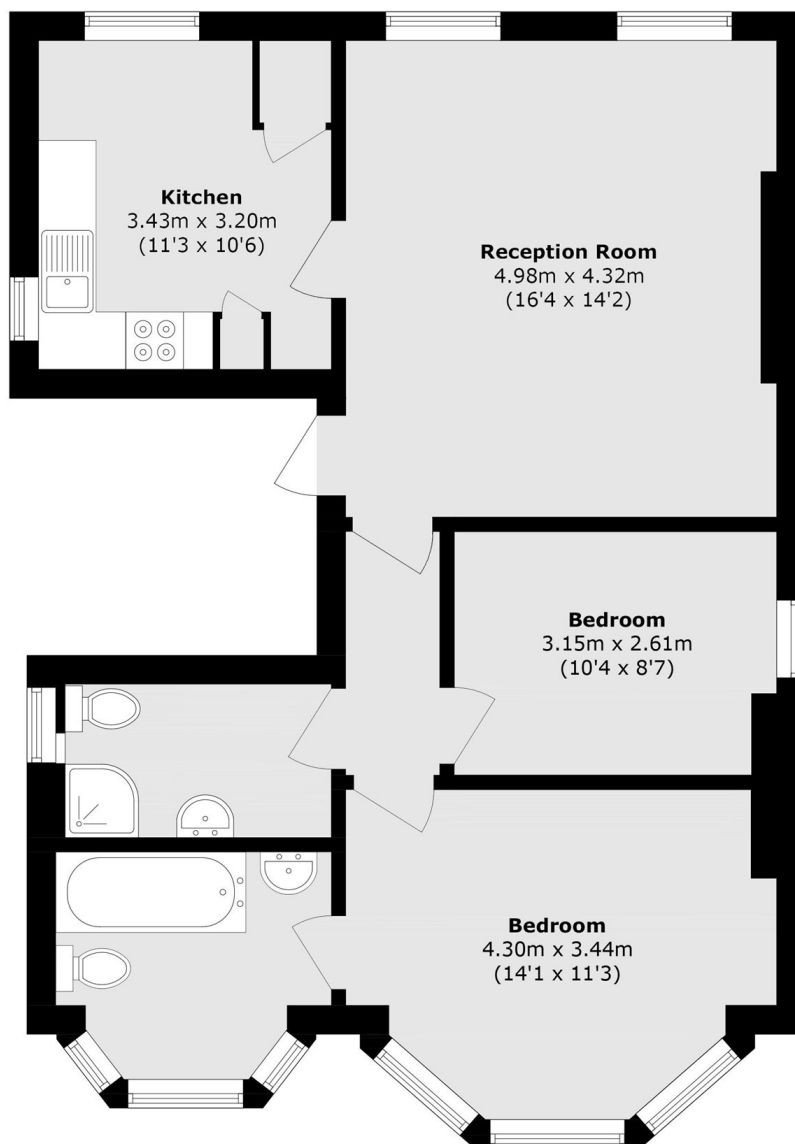
A wonderful, bright and spacious two double bedroom, two bathroom first floor apartment. Located within a beautiful, Edwardian, detached, tile hung villa, this property has an eat in kitchen, and a gorgeous master bedroom with huge bay window. There is also allocated parking.

Effingham Road is a pretty road, close to Victoria Park and the River Thames, Thames Ditton village is nearby and Surbiton train station is less than a mile away with its fast and direct trains to London Waterloo in 15 minutes, as is the bustling high street.

### Features

- Conversion Apartment
- Two Double Bedrooms
- Two Bathrooms
- First Floor
- Allocated Off-Street Parking
- Share Of Freehold

# Effingham Road, Surbiton, KT6



Total area (approx.): 70.9 sq. m (763.2 sq. ft)