



## BLOMFIELD ROAD, W9

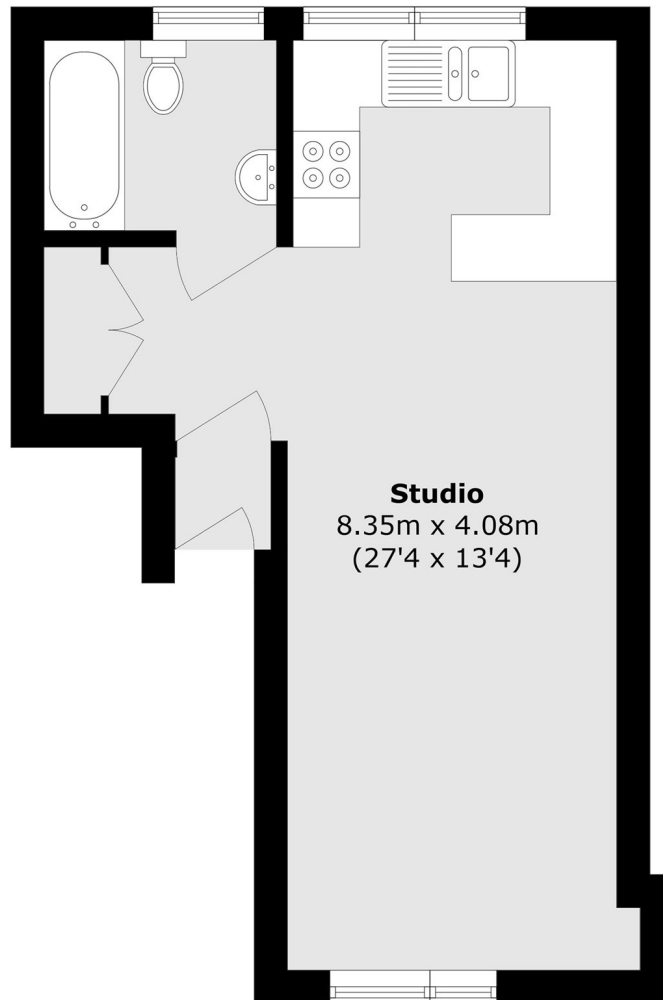
£450,000

A bright top floor studio apartment in prime Little Venice. A generously-sized studio measuring approximately 360 square feet.

Studio apartment  
Top floor

Period features  
Fronting onto Regent's Canal

# STEP INSIDE BLOMFIELD ROAD



## Third Floor

Total area (approx.): 33.5 sq. m (360.6 sq. ft)

Little Venice  
020 7993 3050

Energy Rating: D We aim to make our particulars both accurate and reliable. However, they are not guaranteed; nor do they form part of an offer or contract. If you require clarification on any points then please contact us, especially if you're traveling some distance to view. Please note that appliances and heating systems have not been tested and therefore no warranties can be given as to their good working order

MARSH &  
PARSONS