



Sutton Court, W4

£700,000

Bright and well-presented two double-bedroom apartment in sought-after Sutton Court, offering an eat-in kitchen, communal gardens, residents' parking, share of freehold, and no chain.

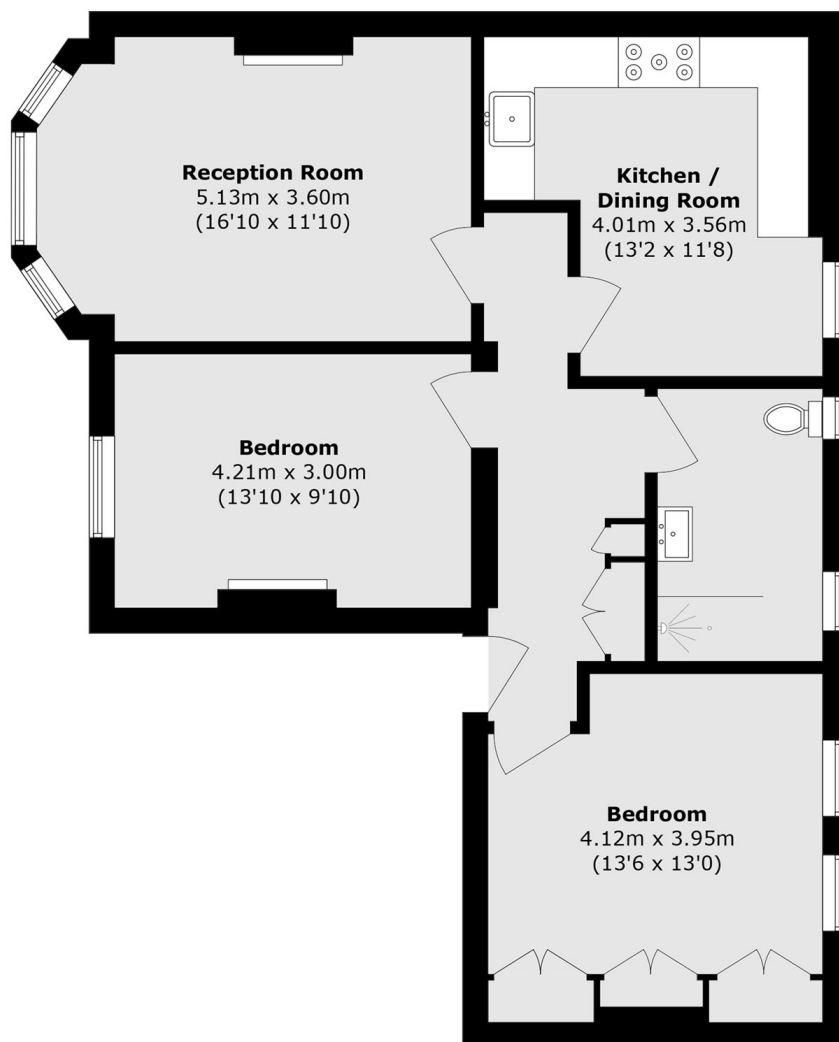
Ideally positioned near Chiswick Park and Fauconberg Village amenities, with Chiswick station within walking distance and bus links to Turnham Green nearby

Features

Mansion Block
Two Double Bedrooms
Share Of Freehold
Residents Parking

No Onward Chain

Sutton Court, London, W4



Total area (approx.): 78.1 sq. m (840.6 sq. ft)