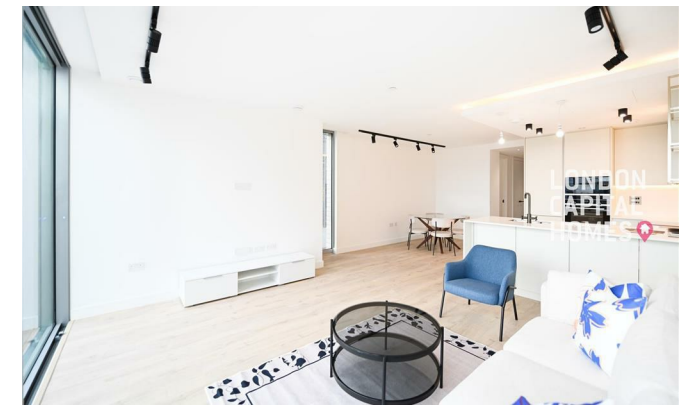


**LONDON  
VICTORIA  
GROUPS** 

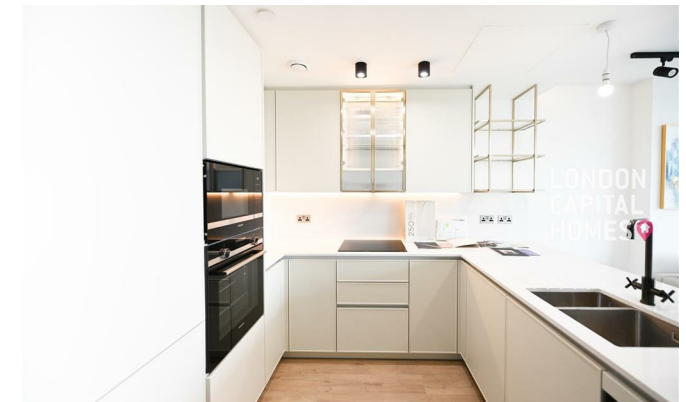


## Valencia Tower, 3 Bollinder Place

, LONDON EC1V 2AP

- Two-bedroom, two-bathroom apartment
  - 24-hour concierge service
- Fully equipped gym and yoga studio
  - Private screening room
  - CTB-G
- Open-Plan Living & Kitchen
- 20-metre swimming pool, spa, sauna, and steam room
- Residents' lounge and business suite
- EPC-B

**£4,450 Per Month**



Local Authority **Islington**  
Council Tax Band **G**  
EPC Rating **B**



APT. 02	36 SQ.M	947 SQ.FT
Kitchen	2.60m x 2.28m	7'0" x 7'5"
Living Room	4.48m x 4.32m	14'6" x 14'1"
Master Bedroom	3.39m x 3.72m	11'1" x 12'1"
Bedroom 2	4.19m x 3.42m	13'7" x 11'1"

**London Office Office**  
Spaces Victoria, 25 Wilton Road, Pimlico,  
London, SW1V 1LW

**Contact**  
020 3084 3094  
XL@londonvictoriagroups.co.uk  
www.londonvictoriagroups.co.uk

Agents Note: Whilst every care has been taken to prepare these particulars, they are for guidance purposes only. All measurements are approximate and for general guidance purposes only and whilst every care has been taken to ensure accuracy, they should not be relied upon and potential buyers/tenants are advised to recheck the measurements.

