



Connells

Southern Terrace
Plymouth



Property Description

We are exciting to introduce this four bedroom mid-terrace period property to the market, situated in a prime central location. Benefiting from four double bedrooms, two reception rooms, kitchen, bathroom, enclosed rear courtyard, roof terrace and on-street parking.

Located in centrally in Greenbank, close to a host of local amenities such as shops and restaurants, well-regarded schools, local parks whilst being a stone's throw away from the city centre, Plymouth university and major transport links.

This property boasts ample space across both floors, with spacious rooms throughout with a stunning bay window and ceiling roses as well as a private roof terrace and brand new roof.

Works on this property will continue throughout marketing, contact agent for further details.

BOOK YOUR VIEWINGS NOW!

Ground Floor

Lounge

13' 1" maximum x 13' maximum (3.99m maximum x 3.96m maximum)

Dining Room

13' 5" maximum x 11' maximum (4.09m maximum x 3.35m maximum)

Kitchen

13' 11" maximum x 9' 1" maximum (4.24m maximum x 2.77m maximum)

First Floor

Bedroom One

10' 8" maximum x 9' 1" maximum (3.25m maximum x 2.77m maximum)

En-Suite

Bedroom Two

13' 8" maximum x 11' 3" maximum (4.17m maximum x 3.43m maximum)

Bedroom Three

13' 6" maximum x 8' 6" maximum (4.11m maximum x 2.59m maximum)

Bedroom Four

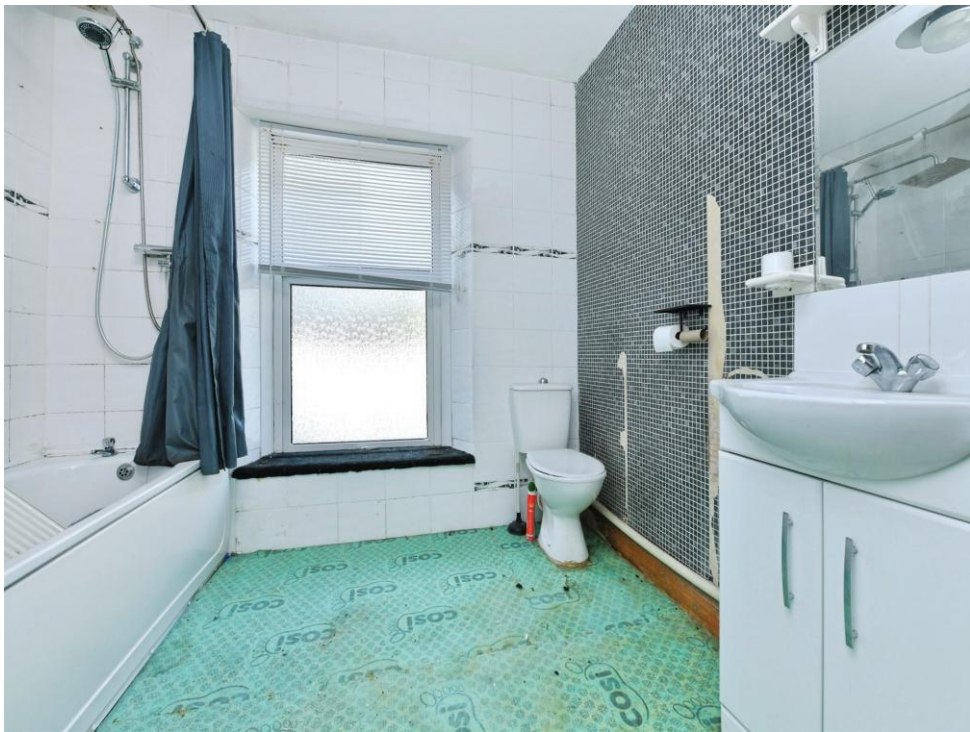
10' 2" x 8' 1" (3.10m x 2.46m)

Second Floor

Roof Terrace

20' 2" maximum x 9' 2" maximum (6.15m maximum x 2.79m maximum)









Total floor area 135.9 m² (1,462 sq.ft.) approx

This floor plan is for illustrative purposes only. It is not drawn to scale. Any measurements, floor areas (including any total floor area), openings and orientation are approximate. No details are guaranteed, they cannot be relied upon for any purpose and they do not form part of any agreement. No liability is taken for any error, omission or misstatement. A party must rely upon its own inspection(s). Powered by www.propertybox.io



To view this property please contact Connells on

T 01752 674 467
E plymouth@connells.co.uk

32 Mannamead Road
 PLYMOUTH PL4 7AA

EPC Rating: D Council Tax Band: B

Tenure: Freehold

view this property online connells.co.uk/Property/PLH313521



1. MONEY LAUNDERING REGULATIONS Intending purchasers will be asked to produce identification documentation at a later stage and we would ask for your co-operation in order that there will be no delay in agreeing the sale. 2. These particulars do not constitute part or all of an offer or contract. 3. The measurements indicated are supplied for guidance only and as such must be considered incorrect. Potential buyers are advised to recheck measurements before committing to any expense. 4. We have not tested any apparatus, equipment, fixtures, fittings or services and it is in the buyers interest to check the working condition of any appliances.

Connells Residential is registered in England and Wales under company number 1489613, Registered Office is Cumbria House, 16-20 Hockliffe Street, Leighton Buzzard, Bedfordshire, LU7 1GN. VAT Registration Number is 500 2481 05.

See all our properties at www.connells.co.uk | www.rightmove.co.uk | www.zoopla.co.uk

Property Ref: PLH313521 - 0002