



## FULHAM PALACE ROAD, SW6

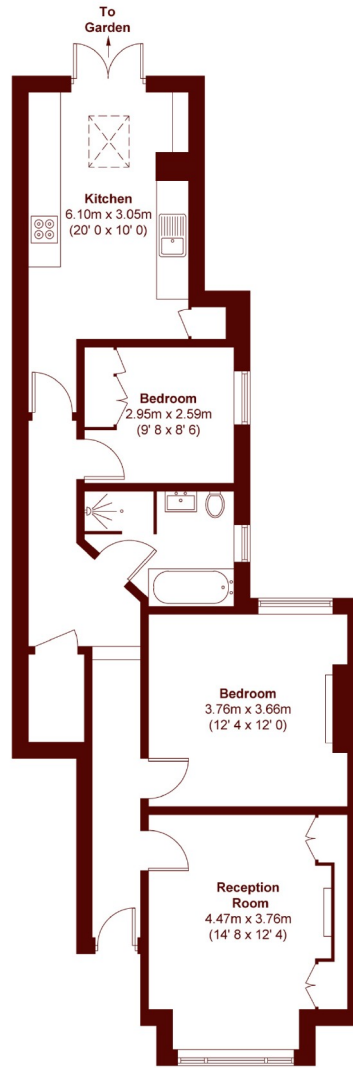
£699,950

An immaculately refurbished two double bedroom ground floor Victorian flat with a private garden. Comprising of a bay-fronted reception room with original fireplace and high ceilings, two double bedrooms, beautiful

Two double bedrooms  
Leasehold  
Large private garden

Ground floor flat  
Excellent transport links  
Modern kitchen

# STEP INSIDE FULHAM PALACE ROAD



Ground Floor

APPROX. GROSS INTERNAL FLOOR AREA  
812 SQFT / 75.4 SQM

**Bishops Park**  
020 7993 9888

Energy Rating: D We aim to make our particulars both accurate and reliable. However, they are not guaranteed; nor do they form part of an offer or contract. If you require clarification on any points then please contact us, especially if you're traveling some distance to view. Please note that appliances and heating systems have not been tested and therefore no warranties can be given as to their good working order

**MARSH &  
PARSONS**