



Craven Gardens, SW19

£945,000

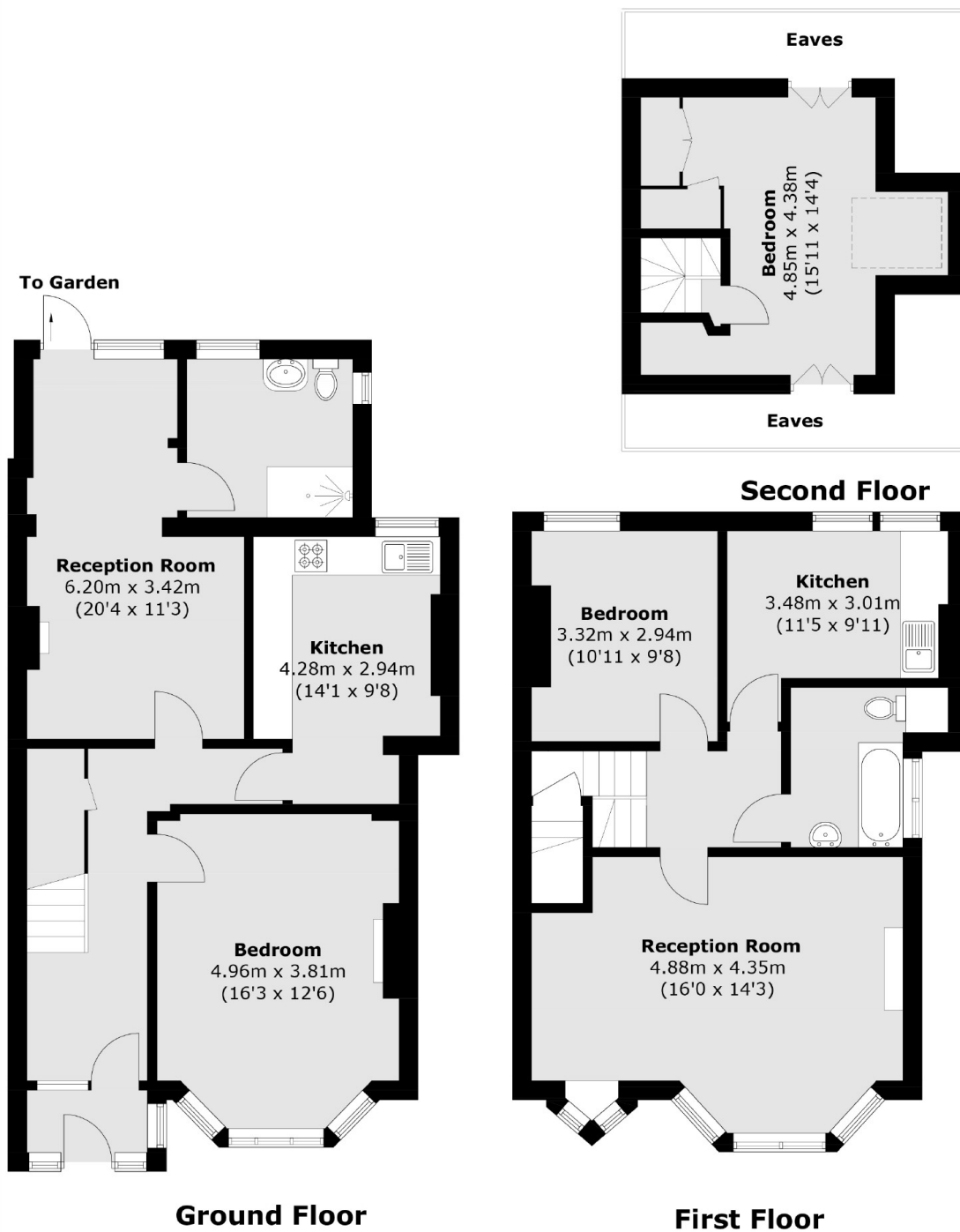
A three double bedroom Edwardian terraced house, offering a south west facing garden. The is in need of modernisation throughout and is offered to the market with no forward chain

Located on a quiet street, this family orientated location is close to highly sought after schools, a fantastic selection of High Street brand shops, restaurants and great transport links.

Features

- Modernisation Required
- Edwardian Terrace
- Freehold
- South Facing Garden
- Close To South Park Gardens

Craven Gardens, London, SW19



Total area (approx.): 143.9 sq. m (1,548.8 sq. ft)
(Excluding Eaves)

Dexters

Wimbledon
12 The Broadway
London
SW19 1RF
Sales
020 8545 8580

Energy Rating: . We aim to make our particulars both accurate and reliable. However they are not guaranteed; nor do they form part of an offer or contract. If you require clarification on any points then please contact us, especially if you're traveling some distance to view. Please note that appliances and heating systems have not been tested and therefore no warranties can be given as to their good working order.

RICS Regulated
Estate Agent
and Letting Agent

dexters.co.uk