

Need a Mortgage in principle to make offers? Call us now for quick assistance!
0121 775 0101



Do you need to sell? Start your journey now! Call us we can help.
01564 777 314



SCAN FOR MORE INFO
SIZE - 1254 Sq Ft
TENURE - Freehold
COUNCIL TAX - Solihull Metropolitan Borough Council - D
BROADBAND - Upload Max 1000Mbps Download Max 1800Mbps
MOBILE - EE - 83%, Vodafone - 79%, 3 - 78, 02 - 76%
EPC - C - 69
PARKING - Detached Double Garage & Ample Driveway
FLOODRISK - Very Low
SERVICES - Mains
COVENANTS - N/A

4 Barwell Close
Dorridge, B93 8TH
Offers in the Region of £650,000

Situated at the end of a quiet cul-de-sac on Barwell Close this impressive detached ex show home offers a perfect blend of space and comfort. The property boasts a generous layout with no upward chain, making it an ideal choice for families seeking a new home.

FEATURES

- Spacious Detached Family Home
- Quiet Cul-de-Sac Location
- Bright Lounge to Front
- Two Further Reception Rooms
- Breakfast Kitchen with Utility Area
- Principal Bedroom with Fitted Wardrobes & En-Suite Shower Room
- Three Further Good Sized Bedrooms
- Family Bathroom
- Private South West Facing Rear Garden
- Ample Driveway Parking & Detached Double Garage
- Arden Academy Catchment

Are you an investor interested in expanding your portfolio?

Call 01564 777 314 to provide your investment criteria for alerts.



SCAN TO VIEW OUR WEEKLY FILMS & SUBSCRIBE

Sneak Peeks

Every week, we unveil "Sneak Peeks," a feature showcasing exclusive properties before they hit Rightmove and other platforms.

The Landlord Club

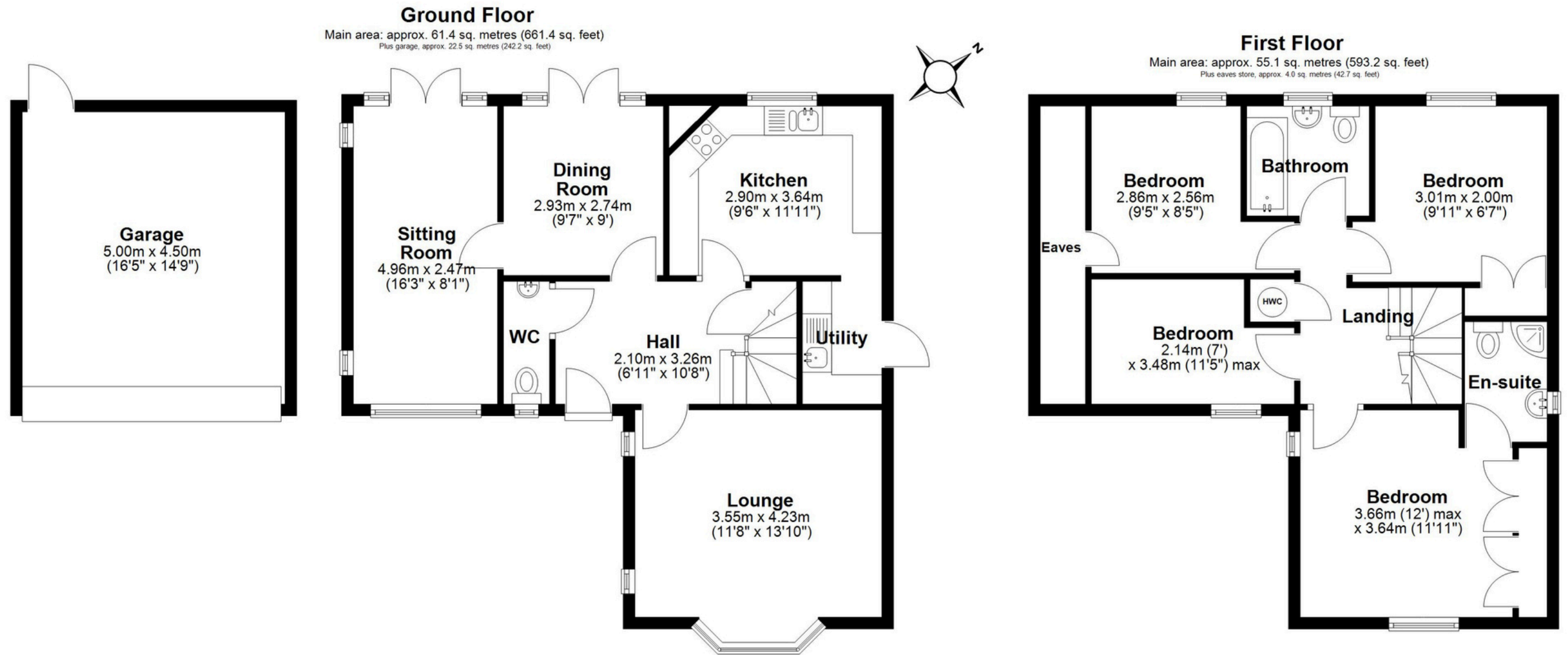
Join our Landlord Club for weekly updates on legislation, market trends, and our Letting Director's 'Investment Pick of the Week' for optimal ROI.

HTSPMD

Tune into 'How's The Solihull Property Market Dom' weekly for a quick, insightful snapshot of the market.

The Mortgage Update

Get weekly insights and the best deals with our Mortgage Update, your shortcut to navigating the complex mortgage landscape confidently.



Main area: Approx. 116.6 sq. metres (1254.6 sq. feet)

Plus eaves store, approx. 4.0 sq. metres (42.7 sq. feet)
 Plus garage, approx. 22.5 sq. metres (242.2 sq. feet)

This floor plan is for illustration purposes only, this is not intended to be a measured/scaled survey or comply with RICS guidelines. All measurements (including total floor area) openings, orientation and floor area are approximate. No details are guaranteed, they cannot be relied upon for any purpose and do not form part of any agreement. A party must rely upon its own inspection(s). No responsibility is taken for any error, omission, or mis-statement.
 Plan produced using PlanUp.