



4 Henshaw Parade

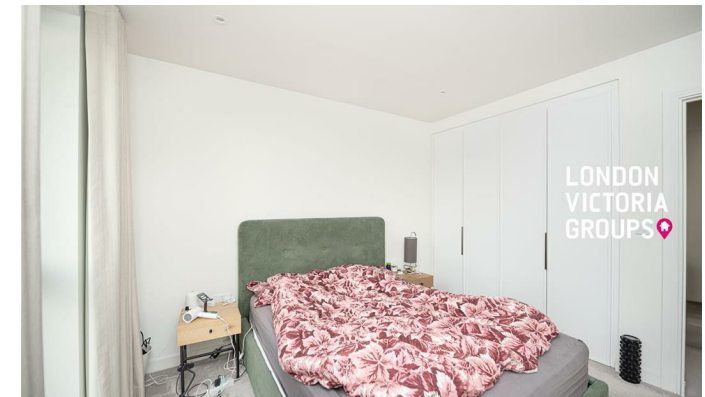
The Hyde, London NW9 6GJ

- 1 bedroom 1 bathroom apartment
- Modern kitchen comes fully fitted with integrated appliances
- Secure entry and lift access
- EPC-B
- Bright open-plan living and dining area
- Close to Colindale Station (Northern Line)
- Gym & lounge
- CTB-C

£470,000 Leasehold



© 2014 Pearson Education, Inc. or its affiliate(s). All rights reserved.



Contact
020 3084 3094
XL@londonvictoriagroups.co.uk
www.londonvictoriagroups.co.uk

Agents Note: Whilst every care has been taken to prepare these particulars, they are for guidance purposes only. All measurements are approximate and for general guidance purposes only and whilst every care has been taken to ensure accuracy, they should not be relied upon and potential buyers/tenants are advised to recheck the measurements.