



Barkby Road, Leicester, LE7 3FE

Property Description

*** STAMP DUTY PAID ***

An ideal first home, The Archford has a good-sized lounge and a modern kitchen-diner, with French doors out to your garden.

Upstairs there are two double bedrooms, with the main bedroom benefitting from its own en suite. A single bedroom and family bathroom complete this home.



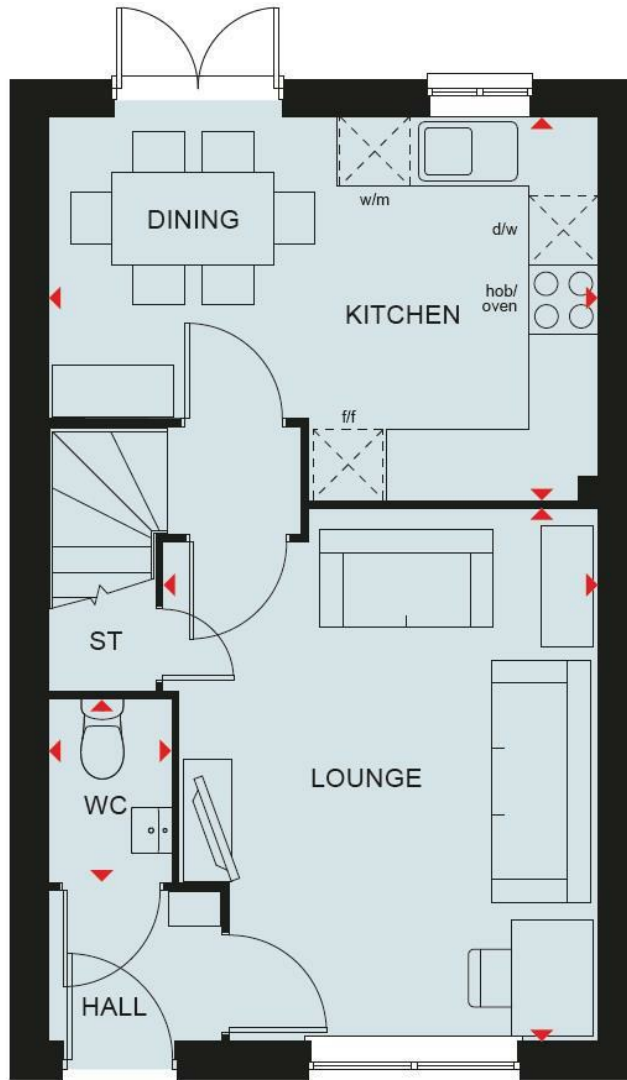


Key Features

- Two double semi detached home
- Stamp duty paid worth £6,999*
- Upgraded kitchen worth £3,000
- Flooring included worth £4,000
- Driveway parking for two cars
- Main bedroom with en suite

£339,995





EPC Rating -

Tenure - Freehold

Council Tax Band - New Build

Local Authority

DISCLAIMER

All fixtures and fittings mentioned in these particulars are included in the sale, all others in the property are specifically excluded. Photographs are reproduced for general information and it must not be inferred that any item is included for sale with the property. These particulars are thought to be materially correct. Their accuracy is not guaranteed and they do not form part of any contract.

We routinely refer clients to both our recommended Legal Firm and a panel of Financial Services Providers. It is your decision whether you choose to deal with these companies. In making that decision, you should know that we receive a referral fee



QUEENS MANOR



- **The Burleigh**
2 bedroom home
- **The Archford**
3 bedroom home
- **The Fairway**
3 bedroom home
- **The Blyford**
3 bedroom home
- **The Hadley**
3 bedroom home
- **The Hadley Wide**
3 bedroom home
- **The Bardon**
3 bedroom home
- **The Ashington**
4 bedroom home
- **The Shenton**
4 bedroom home
- **The Hollinwood**
4 bedroom home
- **The Bradgate**
4 bedroom home
- **The Avondale**
4 bedroom home
- **The Holden**
4 bedroom home
- **The Lichfield**
5 bedroom home
- **The Henley**
5 bedroom home

- **Affordable Housing**
- SH** Show Homes
- MS** Marketing Suite
- BCP** Bin Collection Point
- S/S** Sub Station

- Photovoltaic Panels**
PV panels are not shown on this site plan, please speak to our Sales Adviser for details where these will be located.
- Attenuation Basin**
- Swale**
- Play Area**
- Gravel Path**

- Giving nature a home on this development:**
- Hedgehog Highway**
 - Swift Nesting Brick**
- Positioning of our sustainability features are subject to change. Speak to a Sales Adviser for more information.



See the Difference at dwh.co.uk

To view this property please contact our New Homes (Leicestershire) office on 0116 3087740

DAVID WILSON HOMES
WHERE QUALITY LIVES
Part of

ANDREW GRANGER & CO

SHELDON BOSLEY KNIGHT LAND AND PROPERTY PROFESSIONALS

18823/18/01 Rev. N