



FULHAM PALACE ROAD, SW6

£550,000

A beautifully finished one bedroom, top floor conversion apartment that is bright and airy throughout. Rebuilt in 2023, the flat feels modern, comfortable, and thoughtfully designed, with stylish feature lighting,

Large top floor one bedroom

No chain

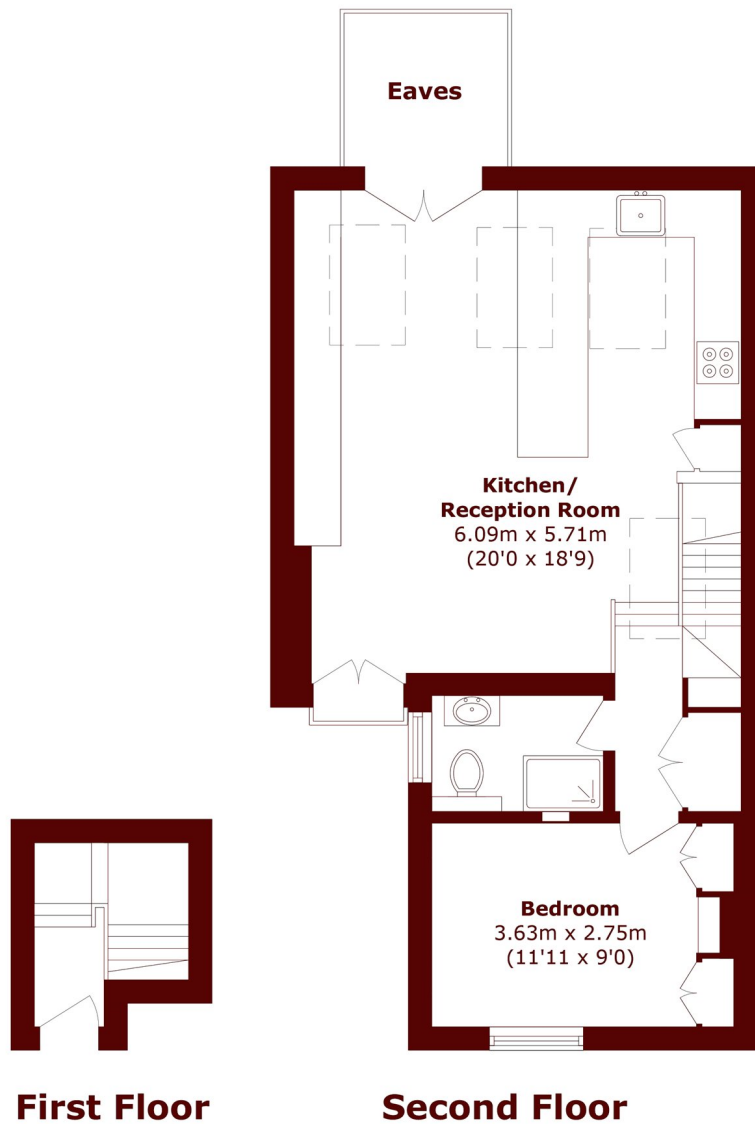
Immaculate condition

Share of freehold

20ft Kitchen/reception

Bishops Park

STEP INSIDE FULHAM PALACE ROAD



Total area (approx.): 57.2 sq. m (615.7 sq. ft)
(Excluding Eaves)

Bishops Park
020 7993 9888

Energy Rating: C We aim to make our particulars both accurate and reliable. However, they are not guaranteed; nor do they form part of an offer or contract. If you require clarification on any points then please contact us, especially if you're traveling some distance to view. Please note that appliances and heating systems have not been tested and therefore no warranties can be given as to their good working order

**MARSH &
PARSONS**