



Maytree Close, Birmingham B37 5ED



welcome to

Maytree Close, Birmingham

****NO CHAIN**THREE BEDROOM TERRACE PROPERTY**THROUGH LOUNGE**DINING KITCHEN**UPSTAIRS BATHROOM**FRONT AND REAR GARDENS**IDEAL FIRST TIME BUYER HOME****



Porch

Double glazed windows to the front and side, spotlights and built in cupboard.

Hallway

Ceiling light point, stairs to the first floor and doors to the lounge and kitchen.

Lounge

Double glazed windows to the front and rear, two radiators and two ceiling light points.

Kitchen

Double glazed windows to the front and rear, double glazed door to the garden, radiator, two ceiling light points, fitted cupboards, draws and base units, roll top worksurface, stainless steel sink and drainer, hob and double oven, plumbing for a washing machine and door to understairs storage.

First Floor Landing

Loft access, ceiling light point and built in cupboard.

Bedroom One

Double glazed window to the front, radiator and built in wardrobe.

Bedroom Two

Double glazed window to the front, radiator and ceiling light point.

Bedroom Three

Double glazed window to the rear, radiator and ceiling light point.

Bathroom

Double glazed window to the rear, radiator and ceiling light point, panelled bath with shower over and pedestal basin.

Separate W.C.

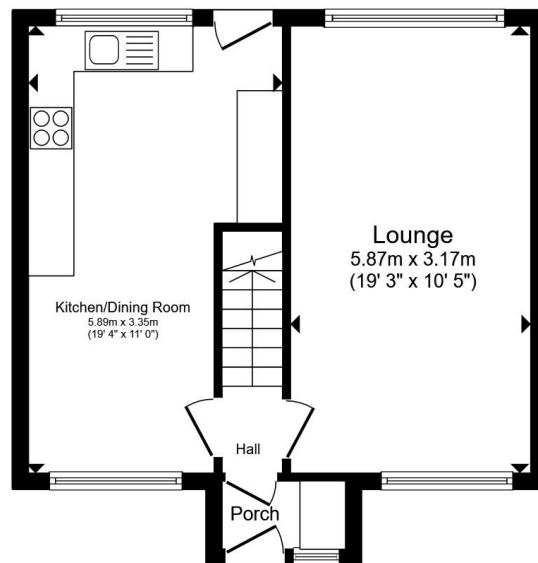
Double glazed window to the rear, ceiling light point, low level WC and half height tiling.

Rear Garden

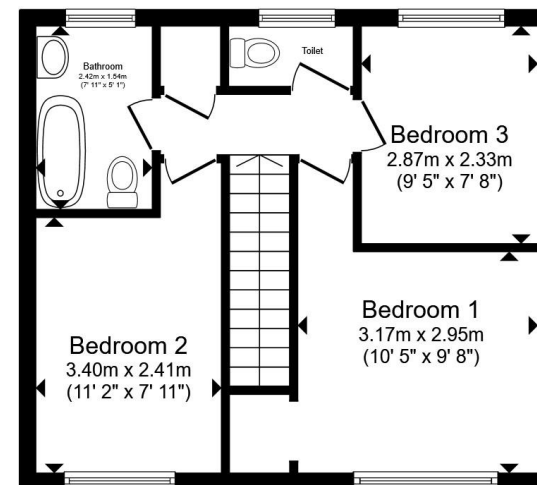
Paved patio area, mainly lawned, brick built shed, enclosed by fencing and gate to the rear access.

Agents Note

This property is of a non-standard construction known as a Morris & Jacobs Timber Frame. We advise interested parties to complete their own research into the suitability of this property.



Ground Floor



First Floor

Total floor area 79.6 m² (857 sq.ft.) approx

This floor plan is for illustrative purposes only. It is not drawn to scale. Any measurements, floor areas (including any total floor area), openings and orientation are approximate. No details are guaranteed, they cannot be relied upon for any purpose and they do not form part of any agreement. No liability is taken for any error, omission or misstatement. A party must rely upon its own inspection(s). Powered by www.propertybox.io


shipways



view this property online shipways.co.uk/Property/CAB112349



welcome to

Maytree Close, Birmingham

- THREE BEDROOM TERRACE PROPERTY
- THROUGH LOUNGE
- DINING KITCHEN
- UPSTAIRS BATHROOM
- FRONT AND REAR GARDENS

Tenure: Freehold EPC Rating: C

Council Tax Band: A

£160,000



Please note the marker reflects the postcode not the actual property

view this property online shipways.co.uk/Property/CAB112349



Property Ref:
CAB112349 - 0002

1. MONEY LAUNDERING REGULATIONS Intending purchasers will be asked to produce identification documentation at a later stage and we would ask for your co-operation in order that there is no delay in agreeing the sale. 2. These particulars do not constitute part or all of an offer or contract. 3. The measurements indicated are supplied for guidance only and as such must be considered incorrect. Potential buyers are advised to recheck measurements before committing to any expense. 4. We have not tested any apparatus, equipment, fixtures or services and it is in the buyers interest to check the working condition of any appliances. 5. Where an EPC, or a Home Report (Scotland only) is held for this property, it is available for inspection at the branch by appointment. If you require a printed version of a Home Report, you will need to pay a reasonable production charge reflecting printing and other costs. 6. We are not able to offer an opinion either written or verbal on the content of these reports and this must be obtained from your legal representative. 7. Whilst we take care in preparing these reports, a buyer should ensure that his/her legal representative confirms as soon as possible all matters relating to title including the extent and boundaries of the property and other important matters before exchange of contracts.

Shipways is a trading name of Sequence (UK) Limited which is registered in England and Wales under company number 4268443, Registered Office is Cumbria House, 16-20 Hockliffe Street, Leighton Buzzard, Bedfordshire, LU7 1GN. VAT Registration Number is 500 2481 05.



0121 747 4722



castlebromwich@shipways.co.uk



258 Chester Road, Castle Bromwich,
BIRMINGHAM, West Midlands, B36 0JE



shipways.co.uk