



## Sheen Road, TW9

£2,250 Per calendar month

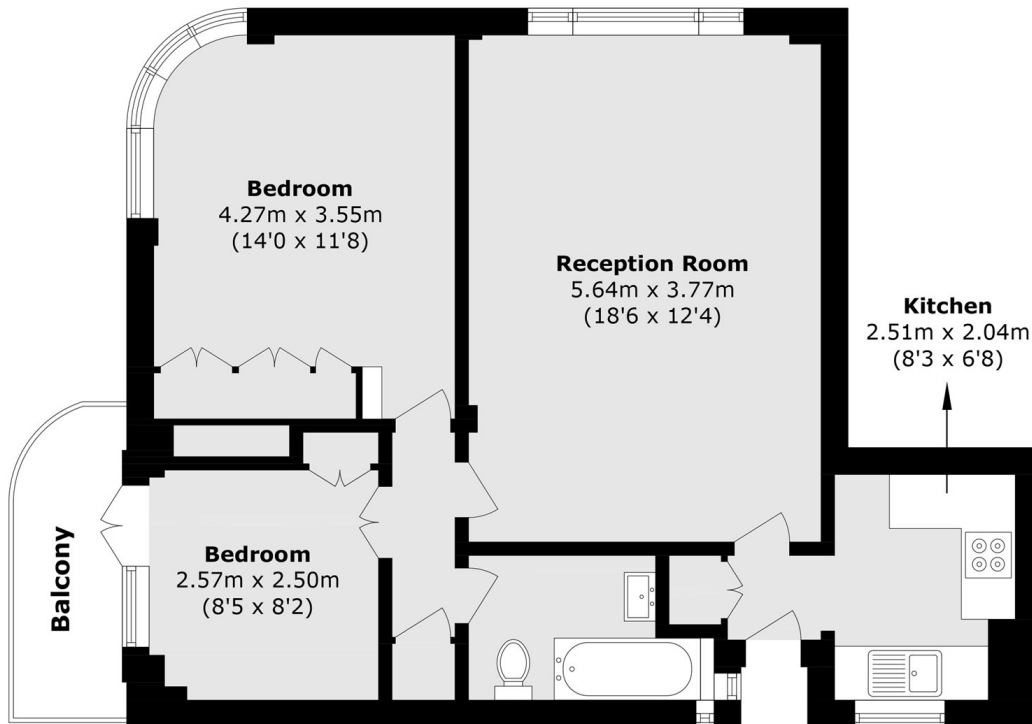
Set within an iconic Art Deco Grade II Listed building is this two bedroom, first floor apartment offering a large balcony. The apartment has an on-site porter offering 24/7 security plus residents off street parking with EV charging points.

Lichfield Court is ideally located for Richmond's array of shopping and leisure amenities including Richmond Park and the River Thames. Richmond train station offers access to London via the District line, South Western trains and the London Overground service.

### Features

- Fourth Floor Flat with Lift Access
- Large Balcony
- Two Bedrooms
- Off Street Parking
- Porter
- Central Richmond

# Sheen Road, Richmond, TW9



Total area (approx.): 59.2 sq. m (637.2 sq. ft)  
Balcony area (approx.): 4.2 sq. m (45.2 sq. ft)