



Smugglers Way, SW18

£450,000

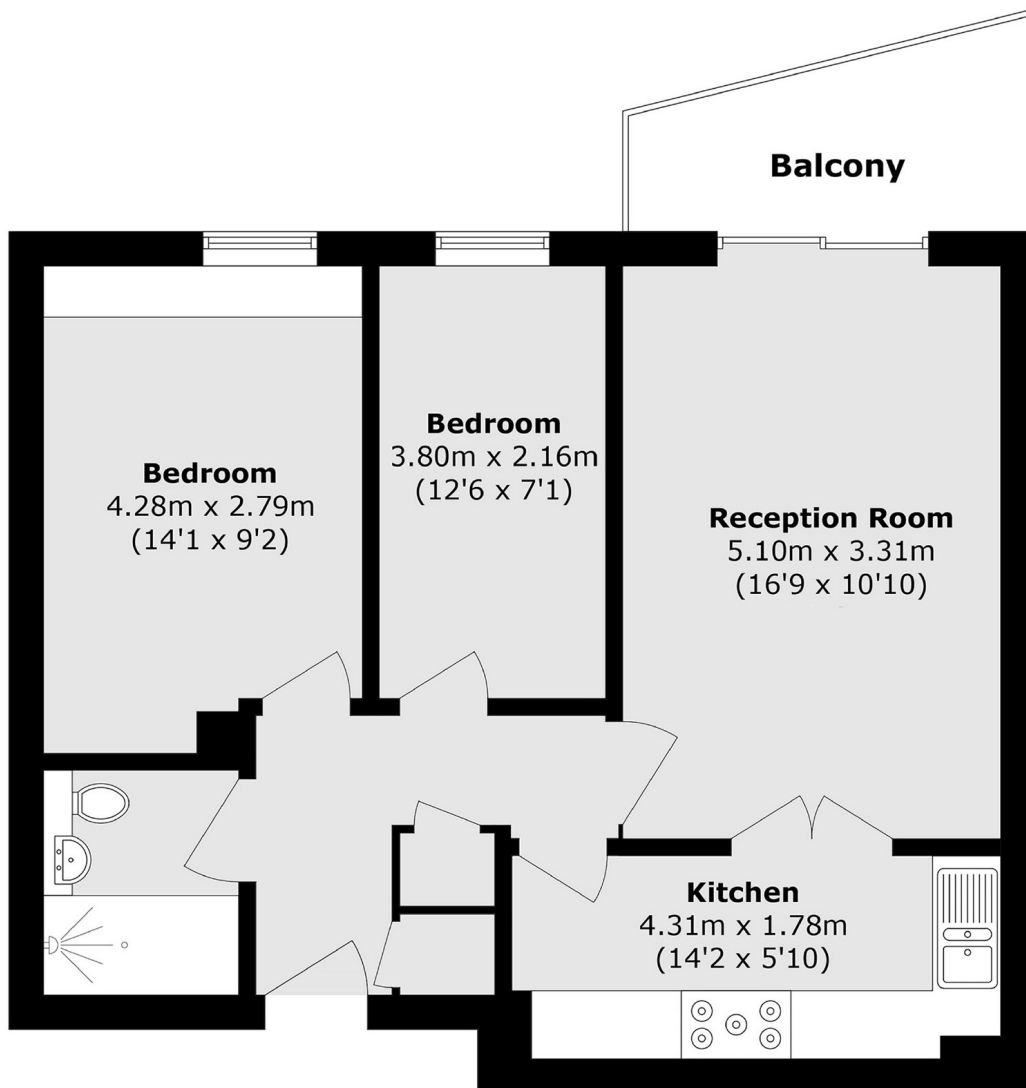
This stylish two-bedroom apartment, situated on the third floor, offers generous living space in a prime riverside location along the Thames. Featuring a bright and airy open-plan kitchen, dining, and reception area, the home extends onto a private outside space (balcony) with sweeping views of the London skyline. The property also benefits from fitted wardrobes in the principal bedroom, along with integrated kitchen and utility appliances.

Dolphin House is part of the popular Riverside West development. There is convenient access to Wandsworth Town train station with direct access to Vauxhall & Waterloo and the Thames Clipper service from the nearby Wandsworth Riverside Quarter pier. The development offers amenities including a 24 hour concierge and on site Virgin Active gym. Council Tax Band- E

Features

- Two Bedrooms
- River Views
- Private Balcony
- Superb Location
- 24 Hour Concierge
- Parking Available Separately

Smugglers Way, London, SW18



Total area (approx.): 55.9 sq. m (601.7 sq. ft)
Balcony area (approx.): 3.2 sq. m (34.4 sq. ft)