



Knollys Road, SW16

£1,800 Per calendar month

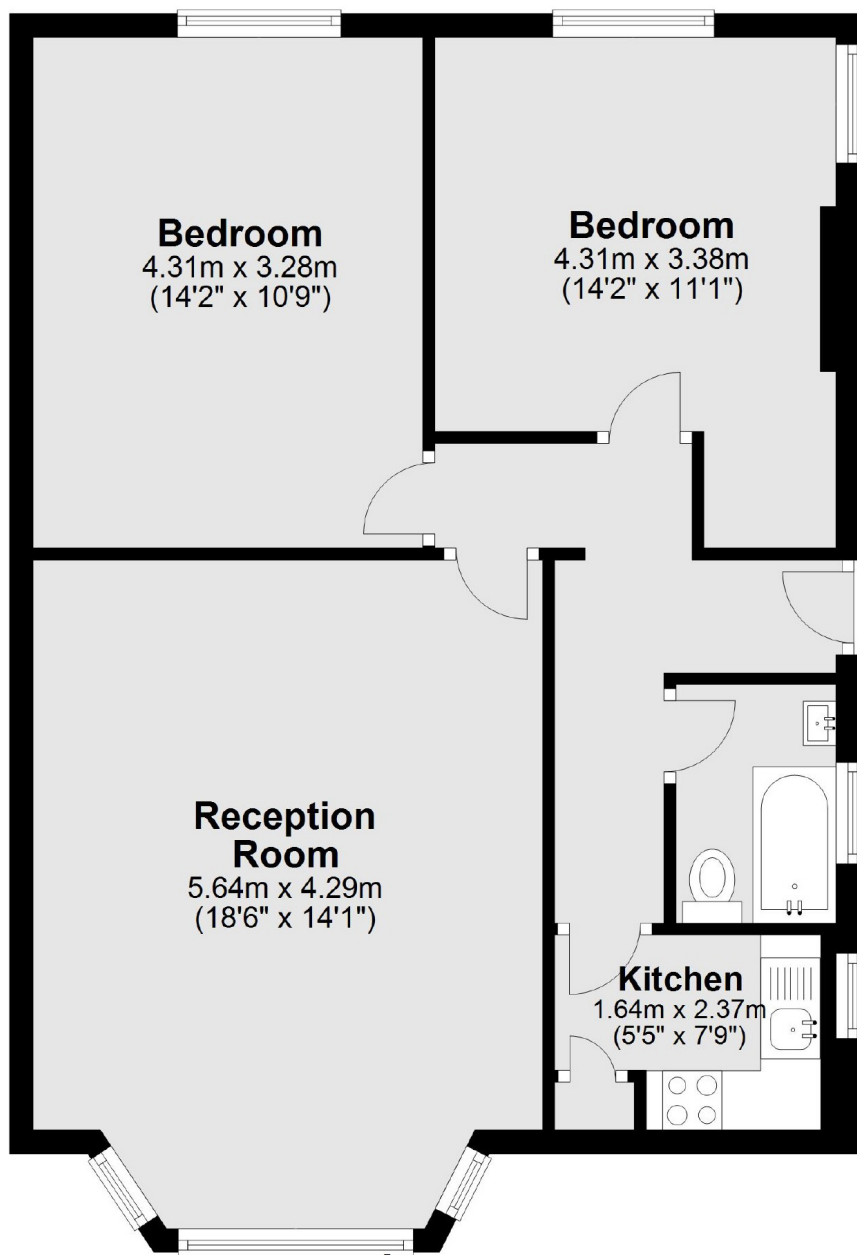
This spacious ground floor flat benefits from wooden flooring throughout, two double bedrooms and a modern kitchen and access to a communal garden.

Knollys Road is located just half a mile away from both West Norwood and Tulse Hill mainline stations, with frequent links to London Victoria and Blackfriars.

Features

- Period Conversion
- Two Double Bedrooms
- Modern Kitchen
- Separate Reception
- Communal Garden
- Close To Transport Links

Knollys Road, London, SW16



Total area: approx. 64.6 sq. metres (695.3 sq. feet)