



15 Allan Park Crescent

Craiglockhart, Edinburgh, EH14 1LE



VMH ESTATE AGENTS



Spacious Craiglockhart family home bursting with potential

- Semi open plan sitting room/family room
- Kitchen
- Dining room with garden access
- 2 bay windowed double bedrooms
- 3rd double bedroom with eaves storage
- Family bathroom
- Sunny rear garden
- Private driveway
- Detached garage
- Upgrading & modernisation required



Offers Over:

£475,000



Further information can be found in the home report.

About the Property

Located within the sought-after Craigmlockhart area of Edinburgh, the property is a detached three bedroom family home offering generous and flexible accommodation with excellent potential for further enhancement.

The property benefits from a detached garage, private driveway, and an attractive and rear garden. Having been extended to the rear and into the attic, the house provides spacious living accommodation suited to modern family life.

While requiring upgrading and modernisation throughout, the property presents an exciting opportunity for purchasers to create a superb family home in a highly desirable residential location.

Extras

The property is to be sold as seen. No warranties or guarantees given.





📍 Location

Craiglockhart lies to the south-west of the city centre and offers a variety of excellent local amenities. It is also within easy access of Napier University. Morningside and Bruntsfield are close by offering a vast array of speciality shops, restaurants, bistros, a Waitrose and a Marks & Spencer.



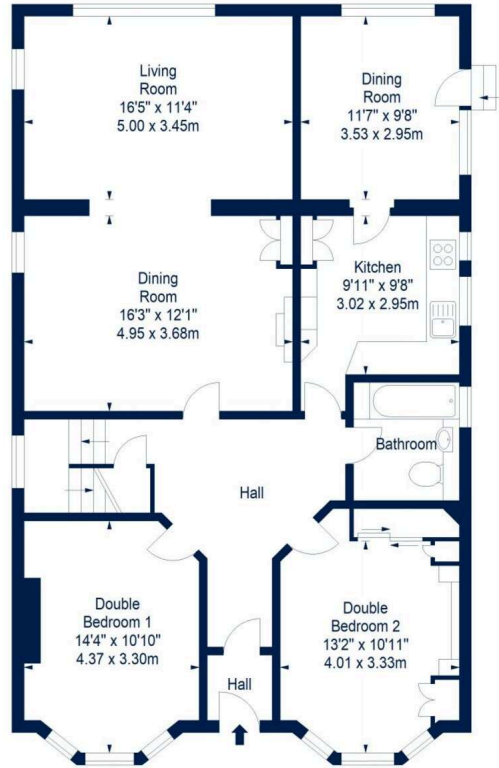
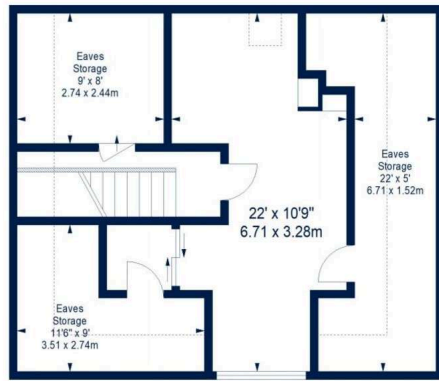
Excellent bus services to and from the city centre are close to hand. Many pleasant walks may be enjoyed in the Blackford, Craiglockhart and Braid Hills, the Craiglockhart Sports Centre offers a wide variety of fitness and sports facilities. The Union Canal walkway provides access to an extensive walking and cycle network leading to the Water of Leith.

There is easy access to the city bypass, Edinburgh International Airport and motorway links to the rest of Scotland and the South.



Floor Plan

15 Allan Park Crescent, Edinburgh, Midlothian, EH14 1LE



First Floor

Ground Floor

Ground Floor

House - Approx. Gross Internal Area - 1748 Sq Ft - 162.39 Sq M
(including eaves storages)

Garage - Approx. Gross Internal Area - 216 Sq Ft - 20.07 Sq M

For identification only. Not to scale. © SquareFoot 2026





VMH ESTATE AGENTS



VMH SOLICITORS

More is our middle name.

Registered Office: 8 Sibbald Walk, Edinburgh, EH8 8FT

 **0131 622 2626**

 **property@vmh.co.uk**

 **vmh.co.uk**

 **DX: 552210, Edinburgh 68**

The dimensions provided are for illustration purposes only; detailed measurements should be taken personally. No documentation will be exhibited in respect of the compliance or otherwise of replacement windows. Although every attempt has been taken to ensure accuracy, the details within the brochure are not guaranteed or warranted and will not form part of any future contract to buy.