



Seymour Place, W1H

£975 Per week

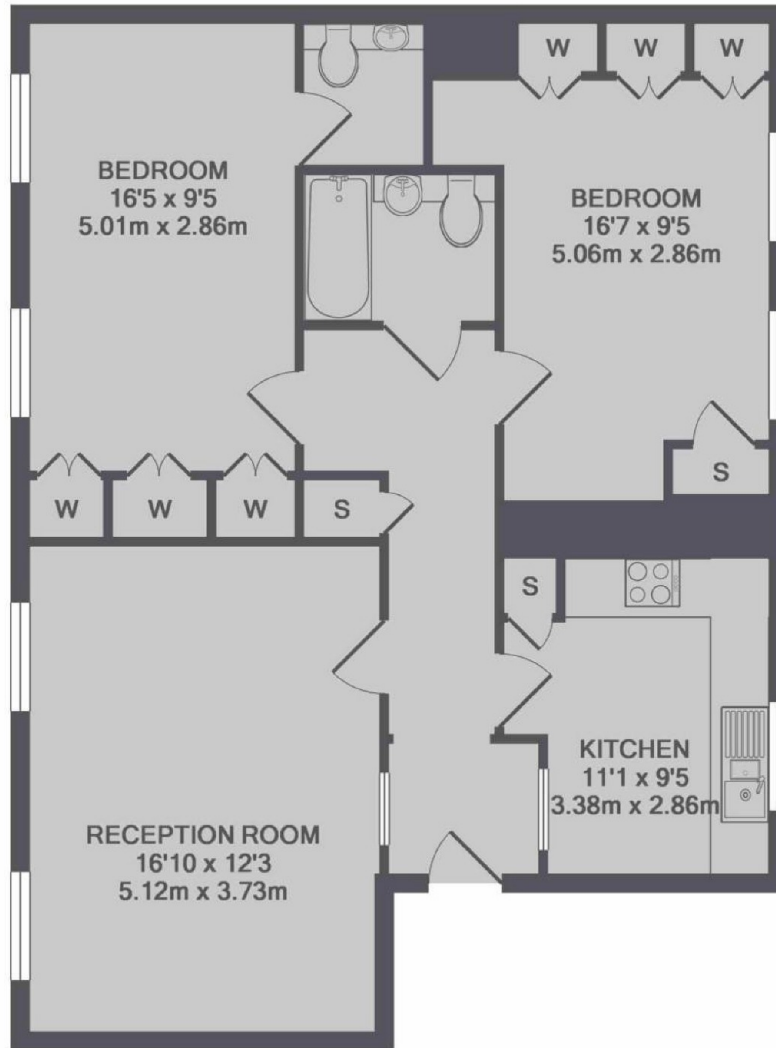
This two bedroom apartment is on the first floor of this period building in Portman Village. The flat has a good sized reception with wood flooring, separate kitchen, two bedrooms with built-in storage, a bathroom and WC.

Seymour Place is moments from Hyde Park, and is served by the famous Portman Village for an array of boutique shops and restaurants.

Features

- Two Bedrooms
- Bathroom & WC
- Modern Kitchen
- Built-In Storage
- The Portman Estate

Seymour Place, London, W1H



TOTAL APPROX. FLOOR AREA 810 SQ.FT. (75.3 SQ.M.)