

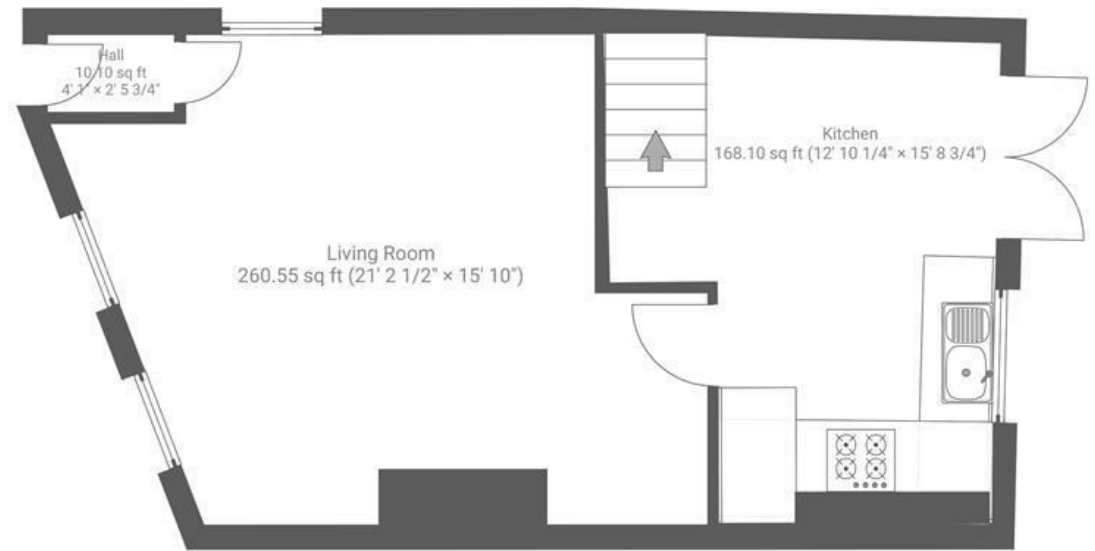
Hill Avenue

VICTORIA PARK

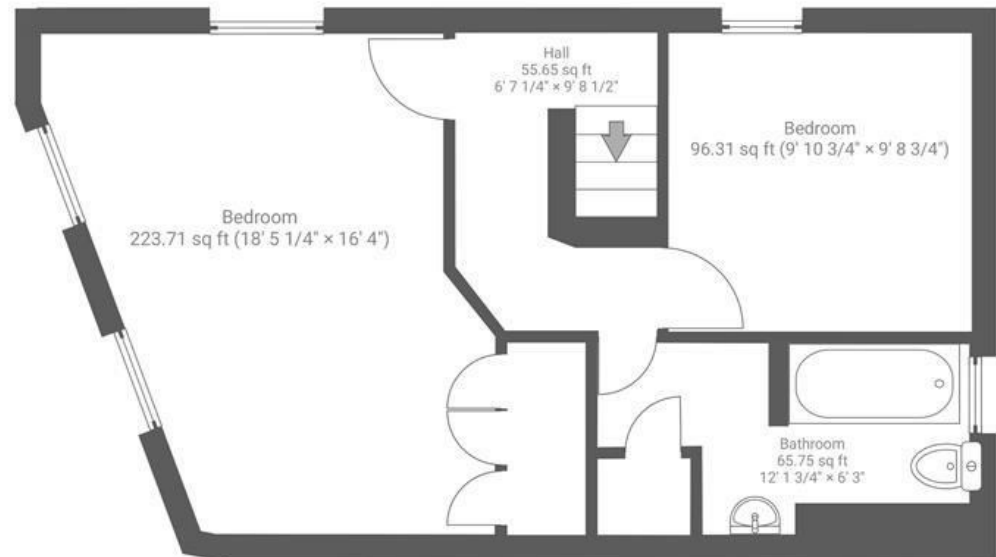
APPROXIMATE FLOOR AREA
83.8 SQM / 903 SQFT



Ground Floor



1st Floor



Boardwalk

Hill Avenue

, BRISTOL

£

£425,000



BS3 4SH

ZZ

2 Bedrooms



1 Bathrooms

"I fell in love with the house for its unique character and history as a former dairy shop. The large windows fill the home with light, while the deceptively spacious layout and quirky angles make it a home that continually surprises. My favourite feature is the view across Victoria Park from the front rooms upstairs, being able to look out over so much greenery gives a wonderful sense of countryside living, despite being right in the heart of the city."

