



**Taylor's**  
Est. 1992

**Shelley Street, Leicester, LE2 6EF**

Leicester

**£219,950**

A beautifully proportioned two-bedroom Victorian terrace set on the quietly positioned Shelley Street, in the popular city suburb of Knighton Fields, close to Clarendon Park and the vibrant Queens Road amenities. Behind its handsome red-brick façade lies a thoughtfully arranged home of warm character and understated charm, where original features sit comfortably alongside carefully considered contemporary updates.

The ground floor unfolds through a welcoming reception room with generous natural light, leading to a second reception room and a well-appointed kitchen complete with under counter fridge and freezer designed for both everyday living and relaxed entertaining. Upstairs, two peaceful double bedrooms are accompanied by a spacious shower room, with soft neutral interiors enhancing the sense of calm throughout.

To the rear, a private garden provides a secluded outdoor retreat, ideal for morning coffee or summer evenings. Shelley Street is exceptionally well placed for the independent cafés, shops and restaurants of nearby Queens Road, while Leicester city centre, Victoria Park and the railway station are all within easy reach.

A quietly elegant home with enduring appeal, offering refined city living in one of Leicester's most well-connected residential neighbourhoods.

### The Area

Shelley Street is situated within Knighton Fields, a popular and well-connected residential area to the south of Leicester city centre. The neighbourhood is particularly appreciated for its Victorian terraces, strong community feel and excellent proximity to Clarendon Park and Queens Road, known for its independent cafés, restaurants, bars and boutiques.

The property is ideally placed for access to Victoria Park, Leicester University and the city centre, while Leicester Railway Station provides direct rail services to London and beyond. Regular bus routes and convenient road links further enhance the area's appeal for commuters and professionals alike.

Knighton Fields continues to attract buyers seeking a balance between vibrant city living and a more established residential setting, with excellent local amenities and green spaces all close at hand.

### Disclaimer





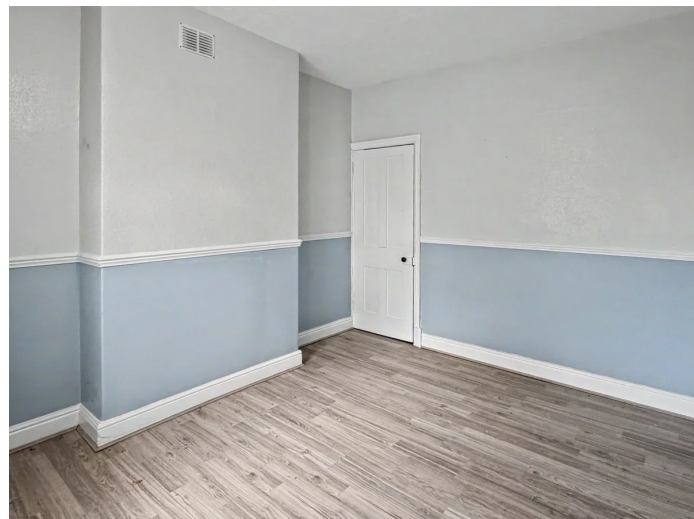
A charming two-bedroom Victorian terrace in the popular suburb of Knighton Fields, close to Clarendon Park and Queens Road amenities. Beautifully presented with characterful interiors, bright living spaces and a private rear courtyard garden.

- Two-bedroom Victorian terrace
- Situated in popular Knighton Fields
- Close to Clarendon Park and Queens Road
- Bright and spacious living areas
- Character features throughout
- Stylish fitted kitchen with integrated fridge and freezer
- Modern family bathroom
- Private rear garden
- Walking distance to Victoria Park
- Offered To The Market With NO CHAIN

**Council Tax Band: A**

**Tenure: Freehold**

**Property Type: Terraced House**





Total: 881 sq. ft  
Ground Floor: 415 sq. ft, 1st Floor: 466 sq. ft  
Excluded Areas: Walls: 109 sq. ft  
Floor Plan Created By Cubicasa App. Measurements Deemed Highly Reliable But Not Guaranteed.



**Taylor's Estate Agency**  
4 Woodgate Rothley Leicester, Rothley Leicester, Leicester

0116 326 6464

hello@taylorsestate.agency

https://taylorsestate.agency/