



## Gordon Road, W5

£2,350,000

This grand, double-fronted period home is a real gem that commands attention. While it is ready for a complete refurbishment, it offers a once-in-a-generation opportunity to transform a historic property into a bespoke "forever" home with incredible prestige.

Perfectly located in Ealing, you are just moments from the vibrant shops, bars, and Elizabeth Line links at Ealing Broadway. With top-tier schools and the greenery of Walpole Park nearby, it's the ideal setting for a sophisticated, long-term family lifestyle.

### Features

- Detached
- Six Bedrooms
- Four Reception Rooms
- Large Garden
- Off Street Parking
- Lots Of Potential



## Gordon Road, W5

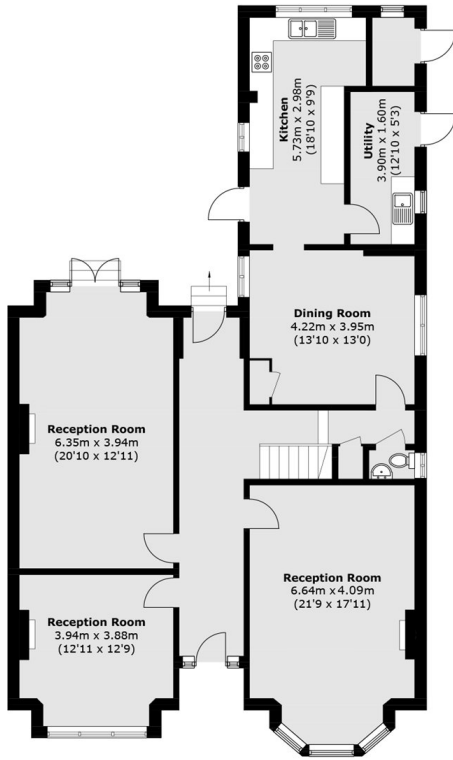
Inside, the huge reception rooms feature soaring ceilings, ornate cornicing, and original marble fireplaces. The double-fronted layout provides a sense of scale that is hard to find, offering immense potential to extend and create a breathtaking open-plan kitchen and living area.

The upper floors are home to a wealth of generous bedrooms, including a massive loft room perfect for a luxury master suite. Every room feels substantial and airy, providing more than enough footprint to accommodate a large family, guest suites, and home offices with ease.

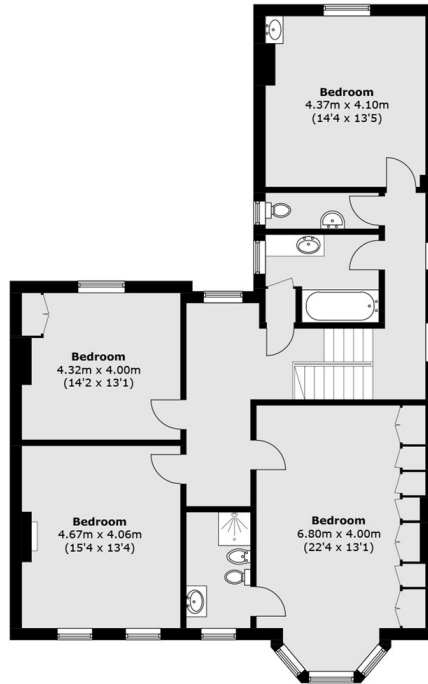
The large rear garden is a complete blank canvas and a rare find for such a central location. It's a private, green sanctuary that offers plenty of room for a designer patio, outdoor kitchen, and safe play areas, making it the ultimate space for summer entertaining.



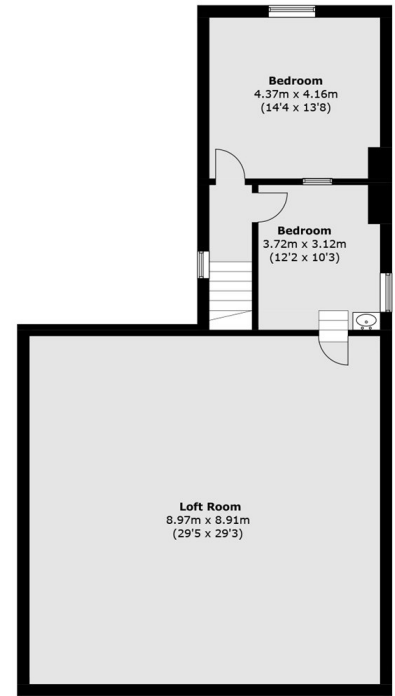
# Gordon Road, London, W5



Ground Floor



First Floor



Second Floor

Approx Internal Area: 368.4 sq. m (3,965.3 sq. ft)  
External Storage: 2.0 sq. m (21.5 sq. ft)