

St. Luke's Estate, EC1V

£2,750 Per calendar month

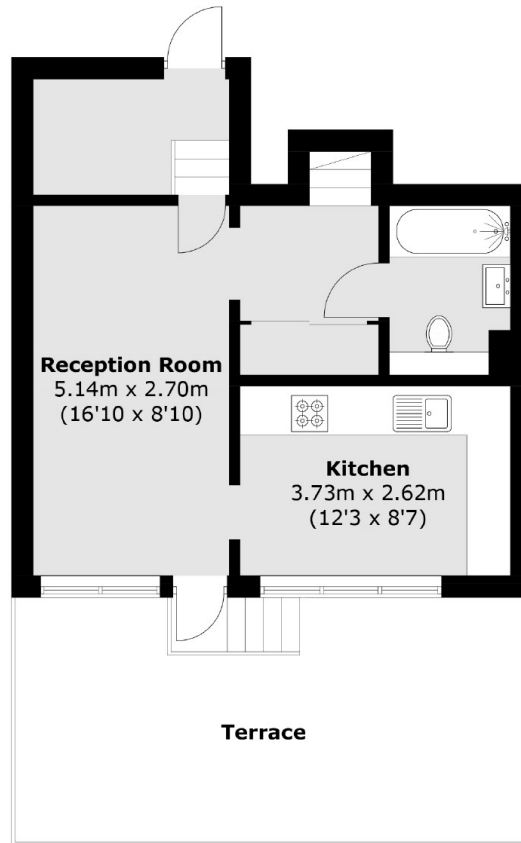
A rare opportunity to rent a two-bedroom duplex apartment, featuring two equally sized bedrooms with ample storage and a spacious private roof terrace accessible from the living room. Perfect for summer entertaining, the apartment boasts a generous living room, a separate kitchen, and breathtaking city views from the terrace.

Ideally located just moments from Old Street station, the flat provides excellent access to the City, as well as the vibrant shops, bars, and restaurants of Shoreditch and central London.

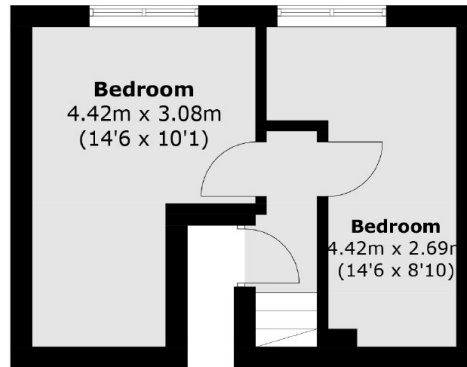
Features

- Two Double Bedrooms
- Private Roof Terrace
- Great Storage
- Large Reception
- Secure Development
- Managed by Dexters

St. Luke's Estate, London, EC1V



Ninth Floor



Eighth Floor

Total area (approx.): 62.7 sq. m (674.8 sq. ft)
Terrace (approx.): 23.9 sq. m (257.2 sq. ft)