



ASKING PRICE

£1,000,000

Queen Anne Avenue

Bromley, BR2 0SA

PROPERTY SUMMARY

This charming early Edwardian four bedroom semi-detached home offers 2058 SQ FT of accommodation with off street parking for two cars. Conveniently located being just 0.3 miles from Bromley South Station and high street with its array of shops, bars and restaurants. Living accommodation comprises a bright entrance hallway with stained glass door, spacious living room with feature bay window, second reception room which could be used as a separate dining room, office or guest bedroom, shower room with toilet. A dining room leading to a spacious kitchen with a door leading to the garden. To the first floor there are three double bedrooms, reasonable size single, family bathroom and additional toilet. Externally there is a private mature garden, outdoor garden room and patio area as well as a large brick built shed to the rear which is currently being used for storage. The property has a side access, wooden storage shed, plus off street parking to the front. Potential to extend if required (STPP) We strongly advise your inspection!

EPC: D
COUNCIL TAX - F
Construction - Traditional
Mains Services - Yes and metered water supply

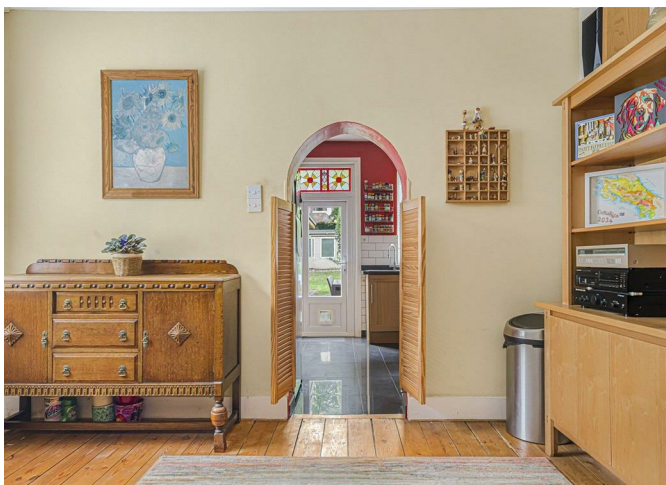
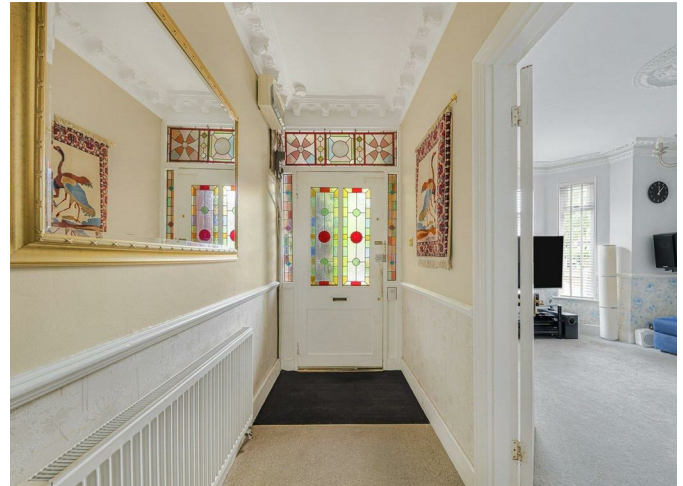
4



2



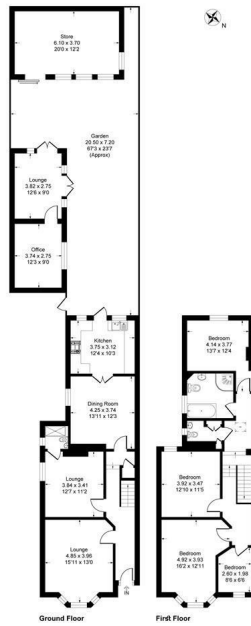
3







Queen Anne Avenue, BR2
 Approximate Gross Internal Area 611 sq ft (56.3m²)
 Original Area 551 sq ft (51.0m²)



This plan is for general guidance only. Not drawn to scale unless stated. Dimensions and door openings are approximate. Whilst every care is taken in the preparation of this plan, please check all dimensions, shapes and corners before making any decisions about your purchase.
 Produced By Planity

4
 2
 3

Energy Efficiency Rating		
	Current	Potential
Very energy efficient - lower running costs		
(92 plus) A		
(81-91) B		
(69-80) C		79
(55-68) D	64	
(39-54) E		
(21-38) F		
(1-20) G		
Not energy efficient - higher running costs		
England & Wales		EU Directive 2002/91/EC

EPC RATING: D COUNCIL TAX BAND: F

Agents Note: Whilst every care has been taken to prepare these particulars, they are for guidance purposes only. All measurements are approximate and are for general guidance purposes only and whilst every care has been taken to ensure their accuracy, they should not be relied upon and potential buyers/tenants are advised to recheck the measurements

Sinclair Hammelton

OFFICE ADDRESS
 23 High Street
 Bromley
 Kent
 BR1 1LG

OFFICE DETAILS
 0208 464 5566
 info@sinclairhammelton.co.uk