



Garden Road, NW8

£507 Per week

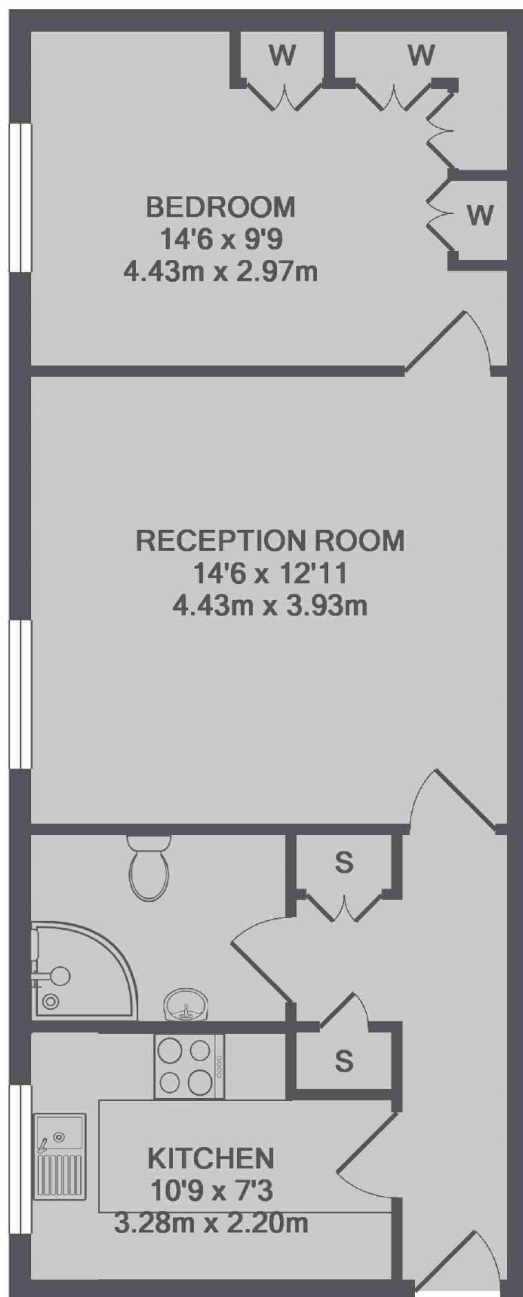
A spacious one bedroom apartment in a purpose built block located a short distance from St John's Wood tube station. Good size reception room with wood floors, separate kitchen with integrated appliances including a dishwasher, refurbished shower room and great storage throughout.

Garden Court is located on Garden Road which is a short distance to St John's Wood tube station and local shops, cafés and restaurants on the High Street.

Features

- One Double Bedroom
- Modern Kitchen
- Communal Garden
- Caretaker
- Communal Heating And Hot Water Included
- Wood Floors Throughout

Garden Road, London, NW8



TOTAL APPROX. FLOOR AREA 539 SQ.FT. (50.1 SQ.M.)