



Seymour Street, W1H

£675 Per week

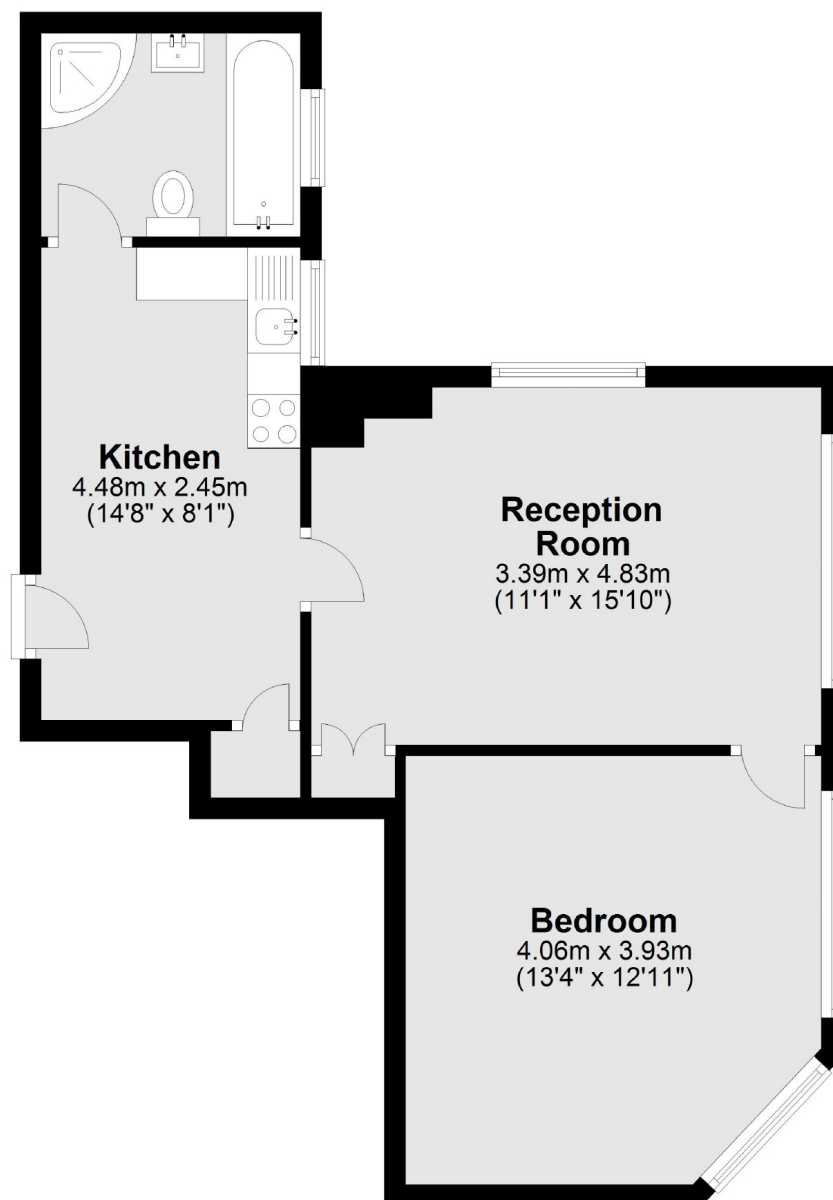
This one bedroom apartment forms part of a portered block located on Seymour Street. There is a good sized reception, separate eat-in kitchen, double bedroom with storage, and bathroom.

Seymour Street sits on the edge of Portman Village which is a favourite for locals, providing a village vibe in the heart of central London. The vibrant shops, bars and restaurants of Marylebone High Street are also within easy reach.

Features

- Portered Building
- One Bedroom
- One Bathroom
- Reception Room
- Separate Kitchen

Seymour Street, London, W1H



Total area: approx. 49.3 sq. metres (531.1 sq. feet)