



Bakehouse Close, Benwick March  
**£450,000** Freehold

**Sharman  
Quinney**

# Key Features



- Separate Double Garage (Still Under Guarantee - 6 years Remaining)
- Private Rear Enclosed Garden
- Spacious 14 Foot Lounge with Bay window and Open Fire
- Master Bedroom with En-Suite
- Spacious Driveway Providing Parking for Multiple Cars

## Ground Floor

Lounge - 13'1" + Bay Window x 14'6" (4.00m + Bay Windows x 4.42m) Featured open fireplace with Bay window to front and window to side.

Large understairs cupboard

## Cloakroom

Fitted with a two-piece suite and comprising of a wash hand basin, low-level-WC and window to side.

Dining Room - 13'4" x 10'0" (4.06m x 3.05m)  
Leading to;



Conservatory - 14'2" x 10'3" (4.32m x 3.12m)  
French Doors leading to the garden.

Kitchen - 13'3" x 14'5" (4.04m x 4.39m)  
Extended 8 years ago, the STUNNING Wren kitchen offers a matching range of base and eye-level units with integrated appliances including two ovens, (one with assisted cooking/microwave) plate warmer, tower fridge freezer, tower fridge, dishwasher, central island with pop up power points, Corian glacier white worktops.  
Leading to:

Utility Room - 4'6" x 4'7" (1.37m x 1.40m)  
Space for stacked Washing Machine and Tumble Dryer, sink with mixer tap with window to front.

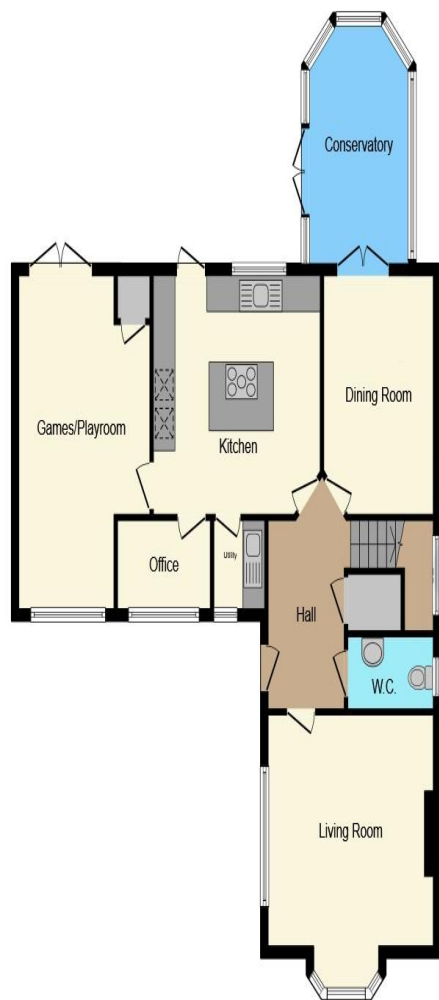
Study - 8'6" x 4'4" (2.59m x 1.32m)  
With window to front.

Snooker Room/Playroom - 11'0" Max x 18'0" (3.35m Max x 5.49m) oil fired boiler.  
Part of the Garage conversion 8 years ago, this spacious multifunctional room offers dual aspect windows with French Doors leading to the Garden.

First Floor  
Galleried Landing  
Leading to;

Master Bedroom - 14'2" Max x 13'0" + Wardrobe

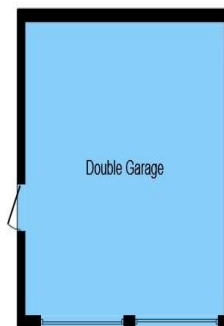




**Ground Floor**



**First Floor**



**Garage**

(4.32m Max x 3.96m + Wardrobe)  
Window to front

**En-Suite**

Recently renovated and fitted with a three-piece suite and comprising of a shower cubicle, wash hand basin, low-level-WC and window

Bedroom 2 - 10'1" x 13'1" (3.07m x 4.00m)  
Window to rear.

Bedroom 3 - 10'3" x 9'3" (3.12m x 2.82m)  
Window to rear.

**Family Bathroom**

Fitted with a four-piece suite and comprising of a bath, double door shower cubicle, wash hand basin, low-level-WC and window to front.

Bedroom 4 - 10'7" x 10'6" (3.23m x 3.20m)  
Window to rear.

Bedroom 5 - 7'0" x 10'7" (2.13m x 3.23m)  
Multifunctional room with window to rear.

**Outside**

The private rear enclosed garden offers an extended Pergola off from the house to provide a stunning seated patio area. Laid lawn to rear with the addition of the covered seating area perfect for hosting.

To view this property call Sharman Quinney on:  
**01487 710345**

This floor plan is for illustrative purposes only. It is not drawn to scale. Any measurements, floor areas (including any total floor area), openings and orientation are approximate. No details are guaranteed, they cannot be relied upon for any purpose and they do not form part of any agreement. No liability is taken for any error, omission or misstatement. A party must rely upon its own inspection(s). Powered by www.focalagent.com

# Selling your property?

Contact us to arrange a **FREE** home valuation.

 01487 710345

 17 Great Whyte, Ramsey, HUNTINGDON,  
Cambridgeshire, PE26 1HG

 ramsey@sharmanquinney.co.uk

 [www.sharmanquinney.co.uk](http://www.sharmanquinney.co.uk)



 SCAN ME



Sharman Quinney Holdings Limited is registered in England and Wales under company number 4174227, Registered Office is Cumbria House, 16-20 Hockliffe Street, Leighton Buzzard, Bedfordshire, LU7 1GN. VAT Registration Number is 500 2481 05.

1: These particulars do not constitute part or all of an offer or contract. 2: The measurements indicated are supplied for guidance only and as such must be considered incorrect. 3: Potential buyers are advised to recheck the measurements before committing to any expense. 4: Sharman Quinney has not tested any apparatus, equipment, fixtures, fittings or services and it is the buyers interests to check the working condition of any appliances. 5: Sharman Quinney has not sought to verify the legal title of the property and buyers must obtain verification from their legal representative. 6: Intending purchasers will be asked to produce identification documentation at a later stage and we would ask your co-operation in order that there will be no delay in agreeing the sale. Ref: RAM204632 - 0008

