



Surrey Row, SE1

£1,400,000

A rarely available, almost 3,500 sq ft, split level property, sold with a Share of Freehold. Currently set out as an office space, over three floors, with two front doors, three WCs, secure off-street parking for two cars and the potential to be converted to a stunning 4-5 bedroom apartment.

Surrey Row runs between Blackfriars Road & Great Suffolk Street in central SE1, 0.2 miles from Southwark & 0.5 miles from Waterloo, with London Bridge, Borough Market, Flat Iron Square & the South Bank all in easy reach.

Features

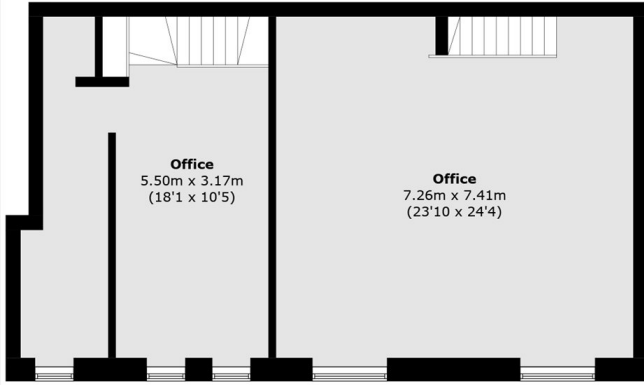
- Share of Freehold
- Triplex Apartment
- Potential for 4-5 Bedrooms
- Almost 3,500 Sq Ft
- Two Secure Parking Spaces
- Cash buyers Only



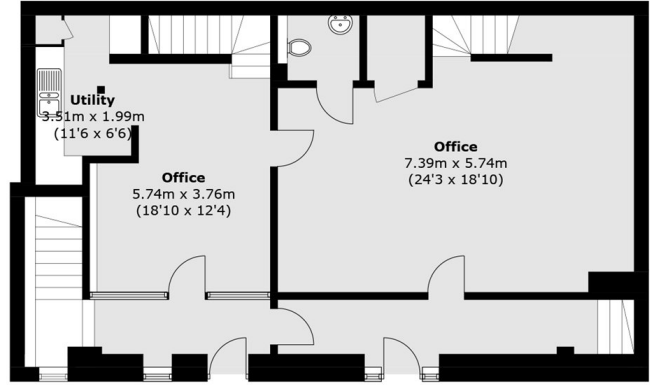
Surrey Row, SE1



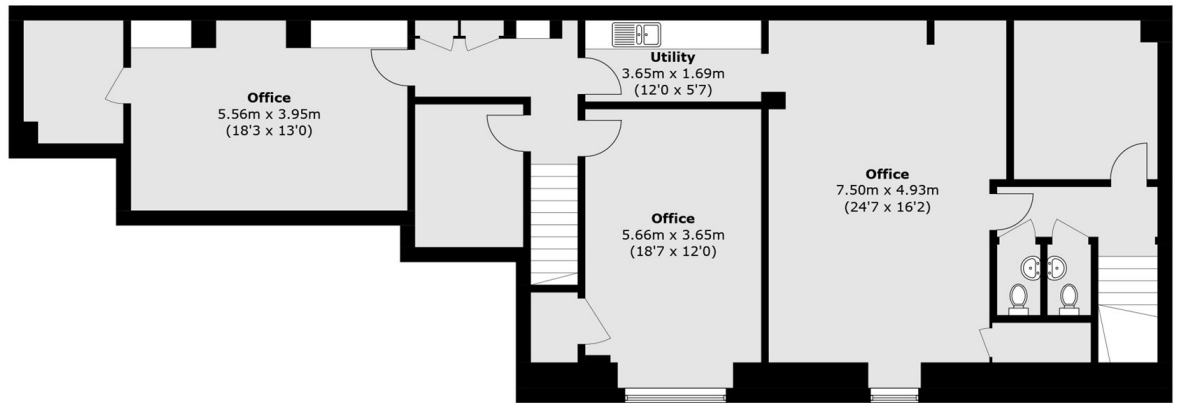
Surrey Row, London, SE1



First Floor



Ground Floor



Lower Ground Floor

Total area (approx.): 321.0 sq. m (3,455.2 sq. ft)