



**POOLE
TOWNSEND**

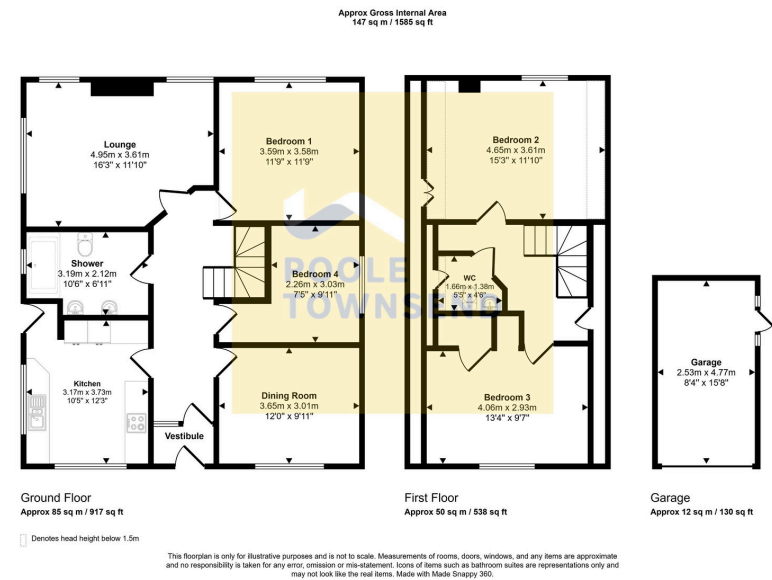
1 Swarthdale Avenue,
£399,950

4 1 2

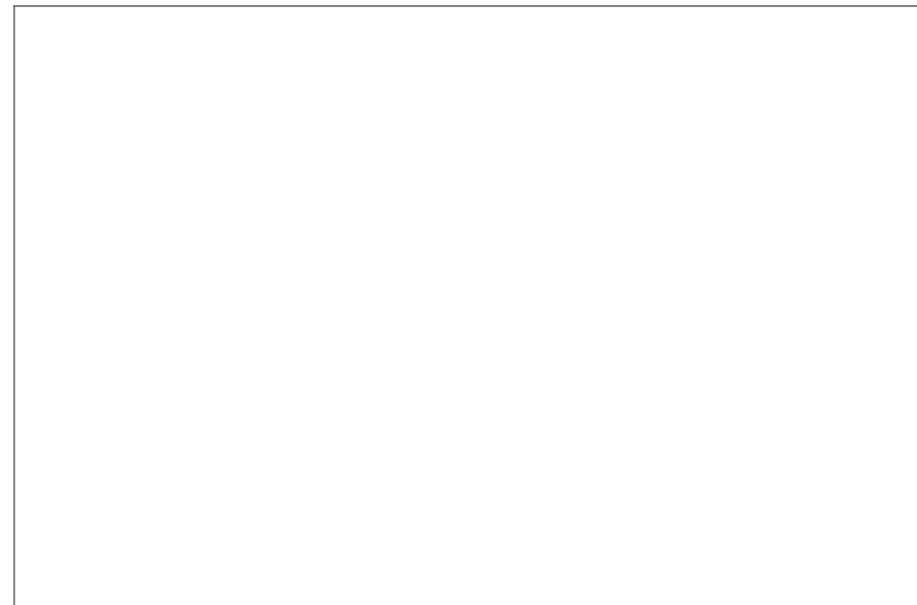


- Fantastic detached home
- 2 reception rooms
- Modern kitchen
- 4 double bedrooms
- Stylish bathroom
- Sought after location
- Lovely gardens to front and rear
- Garage and off road parking with EV charging point
- Council tax band D
- Freehold





This spacious and immaculately presented detached home is located in the popular Croftlands area of Ulverston, close to a range of local amenities including schools, a community centre, park, bus services and shops, making it ideal for family living. The accommodation is arranged over two floors and includes two reception rooms, four double bedrooms, a modern dual-aspect fitted kitchen with integrated appliances, and a stylish fully tiled shower room with twin basins, large walk-in shower and WC, plus a separate additional WC. The home benefits from a light and contemporary feel throughout with well-planned living space. Externally, there is driveway parking for two vehicles with EV charging point, a garage with remote roller door, and attractive front and rear gardens featuring lawn, patio and well-stocked borders.



Visit us at
www.pooletownsend.co.uk
enquiries@pooletownsend.co.uk

We are open
 Monday – Friday 9.00 – 5.00
 Saturday 9.00 – 1.00

Barrow 01229 811811
 Ulverston 01229 588111
 Grange 015395 33316
 Kendal 01539 734455
 Milnthorpe 015395 62044