

for sale

offers in excess of **£195,000** Freehold



Willsbridge Covert Birmingham B14 5YD

Three Bedroom Mid terraced property in Willsbridge Covert in the B14 area South Birmingham. Willsbridge Covert is located five miles south of the city centre. The property benefits from fantastic transport links and local amenities and is in the catchment for well rated schools! Great Family Home!

Residential Sales & Lettings | Mortgage Services |
Conveyancing | Surveyors | Land & New Homes

- Energy Rating: C
- Mid Terraced
- Three Bedrooms
- Double Glazing
- Central Heating

Property Details

Entrance Porch

Via Composite Double Glazed Door

Lounge 17' x 9' (5.18m x 2.74m)

Double Glazed Window

Radiator

Kitchen 12' x 11' (3.66m x 3.35m)

Double Glazed Window

Radiator

Landing

Access to Loft Storage

Bedroom One 14' x 8' (4.27m x 2.44m)

Double Glazed Window

Radiator

Bedroom Two 8' x 8' (2.44m x 2.44m)

Double Glazed Window

Radiator

Bedroom Three 8' 6" x 5' 11" (2.59m x 1.80m)

Double Glazed Window

Radiator

Bathroom

Double Glazed Window x 2

Radiator

Electric Shower

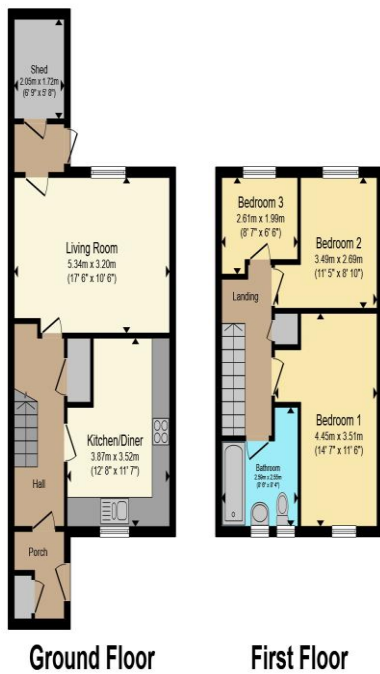
Toilet

Basin

Garden

Paved Area





Total floor area 85.4 m² (919 sq.ft.) approx

This floor plan is for illustrative purposes only. It is not drawn to scale. Any measurements, floor areas (including any total floor area), openings and orientation are approximate. No details are guaranteed, they cannot be relied upon for any purpose and they do not form part of any agreement. No liability is taken for any error, omission or misstatement. A party must rely upon its own inspection(s). Powered by www.propertybox.io



To view this property please contact Connells on

T 0121 443 3357
E kingsheath@connells.co.uk

93 High Street Kings Heath
 BIRMINGHAM B14 7BW

Property Ref: KTH310938 - 0006

Tenure: Freehold EPC Rating: C

Council Tax Band: B

1. MONEY LAUNDERING REGULATIONS Intending purchasers will be asked to produce identification documentation at a later stage and we would ask for your co-operation in order that there will be no delay in agreeing the sale. 2. These particulars do not constitute part or all of an offer or contract. 3. The measurements indicated are supplied for guidance only and as such must be considered incorrect. Potential buyers are advised to recheck measurements before committing to any expense. 4. We have not tested any apparatus, equipment, fixtures, fittings or services and it is in the buyers interest to check the working condition of any appliances.

Connells Residential is registered in England and Wales under company number 1489613, Registered Office is Cumbria House, 16-20 Hockliffe Street, Leighton Buzzard, Bedfordshire, LU7 1GN. VAT Registration Number is 500 2481 05.

see all our properties at www.connells.co.uk | www.rightmove.co.uk | www.zoopla.co.uk