



£399,950

Upper Sutton Lane

Heston, Hounslow, TW5 0PT

PROPERTY SUMMARY

Chain Free. Attractive Two Bedroom Mid-Terrace Cottage with Generous Rear Garden

Situated along the well-located Upper Sutton Lane, this charming two bedroom mid-terrace cottage offers bright and airy accommodation throughout, making it an ideal purchase for first-time buyers, small families or investors alike.

The property is presented in a light and neutral décor, creating a welcoming and spacious feel from the moment you step inside. The ground floor comprises a comfortable reception room with ample natural light, leading through to a well-proportioned kitchen area. A ground floor bathroom adds convenience and practicality to the layout.

To the first floor are two good sized bedrooms, both offering plenty of natural light and comfortable living space.

Externally, the property benefits from a large rear garden a fantastic feature of this home providing excellent space for outdoor entertaining, gardening enthusiasts, or future extension potential (subject to the usual planning permissions).

2



1



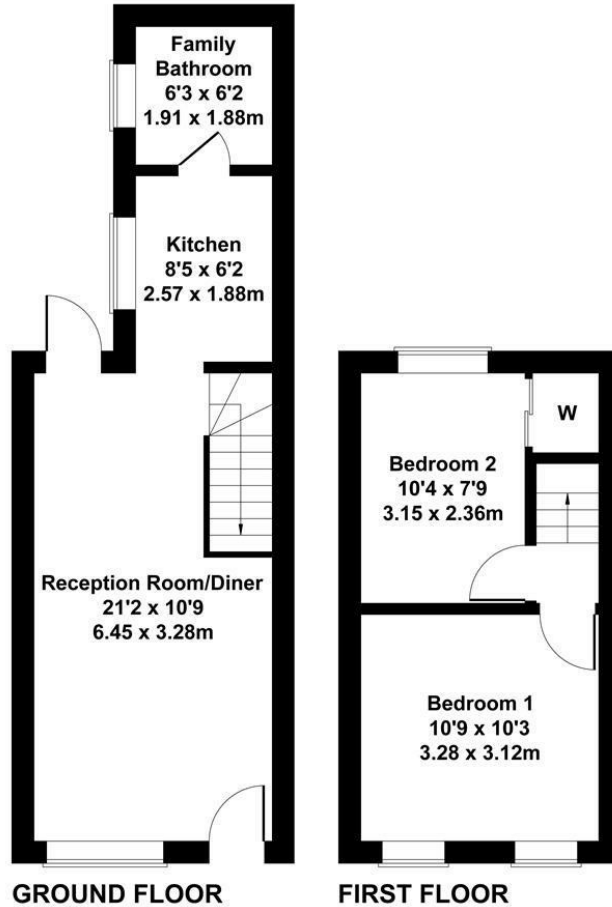
1





Upper Sutton Lane, Heston

Approximate Gross Internal Area
552 sq ft - 51 sq m



Not to Scale. Produced by The Plan Portal 2026
For Illustrative Purposes Only.



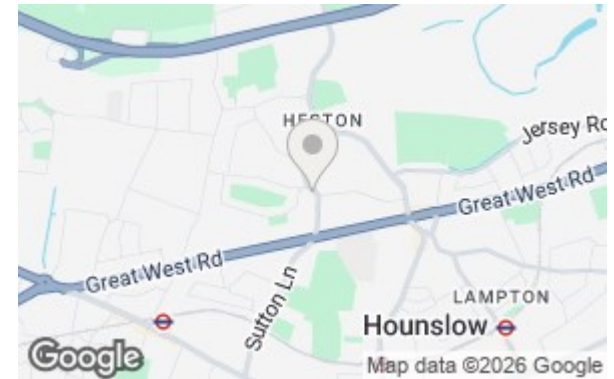
LOCAL AUTHORITY
Hounslow London Borough Council

TENURE
Freehold

COUNCIL TAX BAND
C

VIEWINGS
By prior appointment only

Energy Efficiency Rating		Current	Potential
Very energy efficient - lower running costs			
(92 plus) A			
(81-91) B			88
(69-80) C		68	
(55-68) D			
(39-54) E			
(21-38) F			
(1-20) G			
Not energy efficient - higher running costs			
England & Wales		EU Directive 2002/91/EC	



Agents Note: Whilst every care has been taken to prepare these particulars, they are for guidance purposes only. All measurements are approximate and are for general guidance purposes only and whilst every care has been taken to ensure their accuracy, they should not be relied upon and potential buyers/tenants are advised to recheck the measurements

Shaw & Co
ESTATE AGENTS

OFFICE ADDRESS
10 Central Parade
New Heston Road
Heston
Middlesex
TW5 0LJ

OFFICE DETAILS
0208 570 7258
heston@shawandcoestates.com