



Guide Price
£200,000

Leasehold

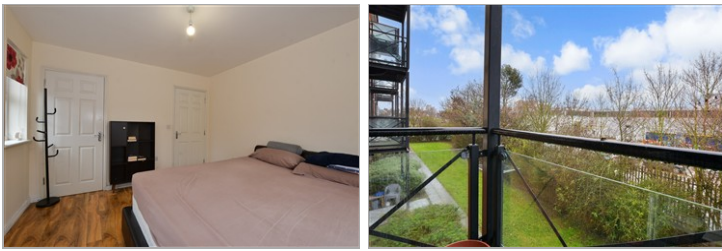
1x  1x  1x 

**Piper Way, Ilford, Essex,
IG1**

OVER 60?

Secure this property
for up to **59% less!**

 **DOUGLAS
ALLEN**
Helping you move forwards



Main features

- Well maintained first floor purpose built flat
- Own balcony
- Open plan living area
- Allocated parking
- Walking distance to Seven Kings station/Elizabeth Line

Accommodation

FIRST FLOOR

Entrance Hall

Lounge/Kitchen/Dining Room: 15'8 x 10'9 (4.78m x 3.28m) plus 9'4 x 10'9 (2.85m x 3.28m)

Bedroom 1: 12'2 x 11'1 (3.71m x 3.38m)

Bathroom

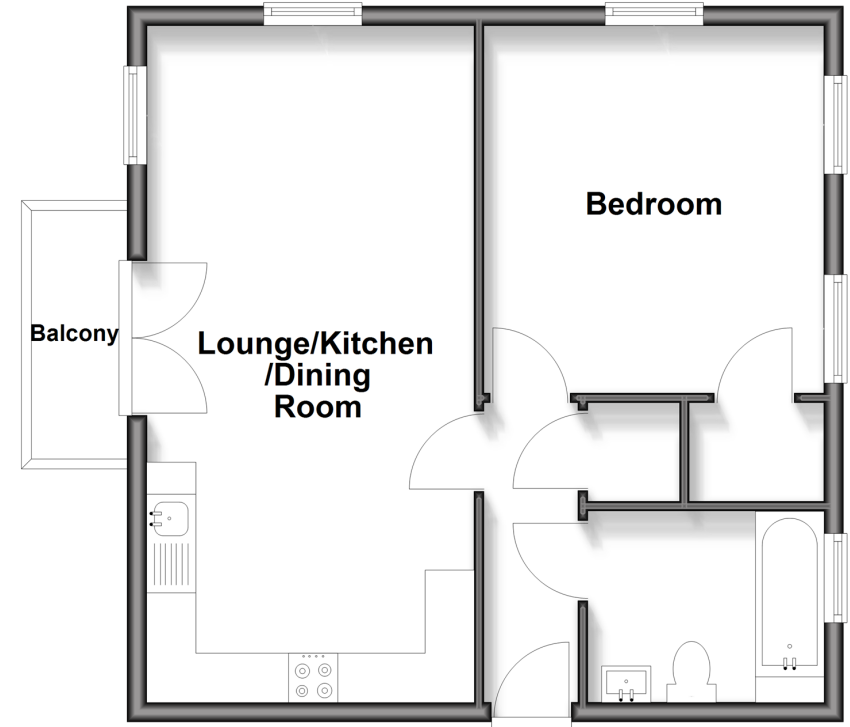
Balcony

OUTSIDE

Allocated Parking

First Floor

Approx. 47.4 sq. metres (509.7 sq. feet)



Call Ilford - 020 8518 0044 ■ douglasallen.co.uk

■ Through a Homewise Home For Life Plan people aged 60+ can secure this property for up to 59% less, by purchasing a Lifetime Lease



50714023/20260330/CN/NK