

Plots 2 & 3, Site to South of Auchenside

Golf Course Road, Whiting Bay
Isle of Arran, North Ayrshire, KA27 8QT



Watermans

Two generous fully serviced plots on Golf Course Road in Whiting Bay

After the successful sale of Plot 1, Watermans are excited to bring to the market Plots 2 and 3 on Golf Course Road in Whiting Bay – two generous, fully serviced plots with fantastic sea views. The plots come with planning permission already in place for a three-bedroom detached bungalow each.

Features

- Two generous fully serviced plots on Golf Course Road in Whiting Bay
- Plot 2: **1716 m²**
- Plot 3: **1707 m²**
- Planning permission already in place for a three-bedroom detached bungalow on each plot, extending to 132.48 m²
- Elevated position with sea views
- Within walking distance of the centre of the village



Entrance & View to Plot 2



Entrance & View to Plot 3

With self-building becoming increasingly popular and in particular high demand on the Isle of Arran, this is an exciting opportunity to purchase one of two fully serviced plots in Whiting Bay, in an elevated position with wonderful far-reaching views and within strolling distance of the village's centre. The ground area for plot 2 extends to approximately 1716m² and plot 3 is approximately 1707m² or thereby. The plots come with planning permission already in place for a three-bedroom detached bungalow each, both extending to **132.48m²** (Gross Floor Area). The dwellings on plots 1 and 3 are similar layout, with the dwelling on plot 2 to be opposite-hand (this is a condition of the planning permission). Bungalows are in high demand on the island at the moment, and these plots offer an ideal opportunity for a developer looking to build and sell, for those looking to live on the island or have a second/holiday home, or for the holiday rental market, with Arran a sought-after place for tourists and holidaymakers to visit.



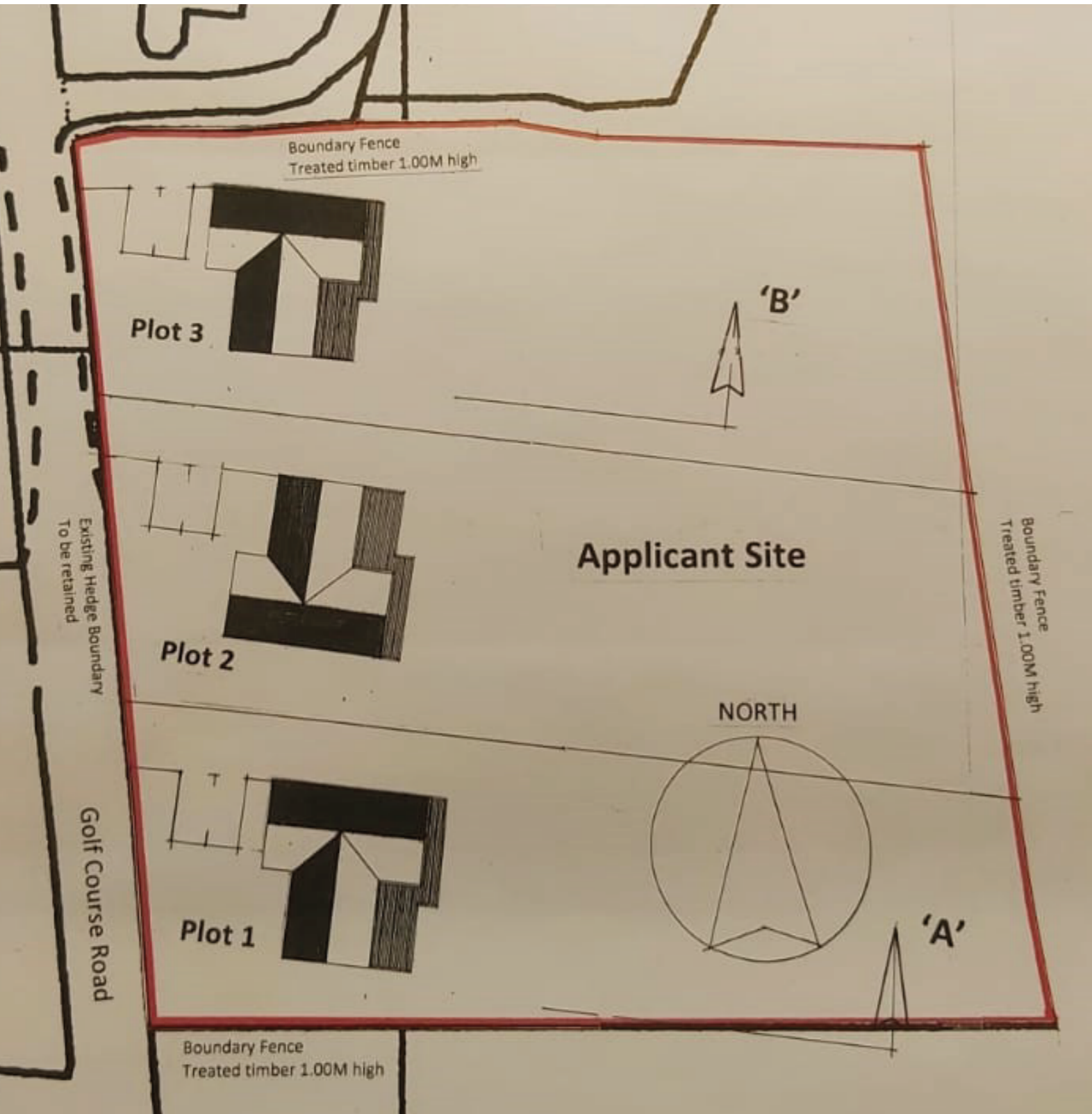
Plot 1
Sold

Plot 2

Plot 3

North

Proposed site plan





Plot 1
driveway
(SOLD)

Plot 2
driveway

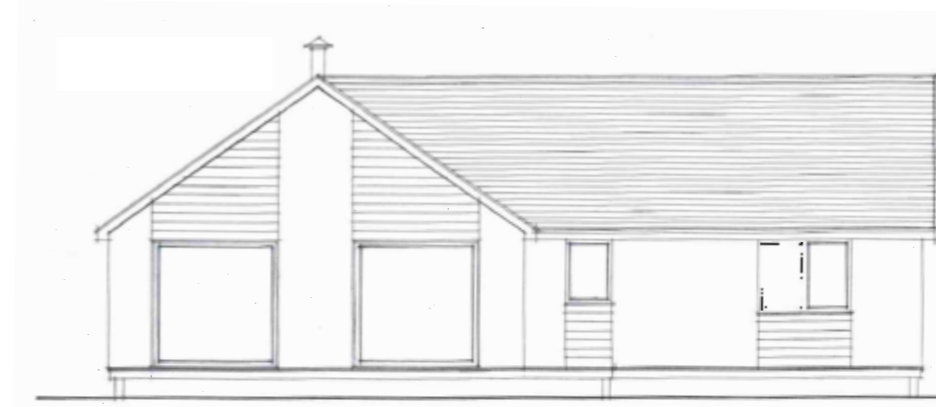
Plot 3
driveway

Three-bedroom detached bungalow

(Plots 2 & 3)



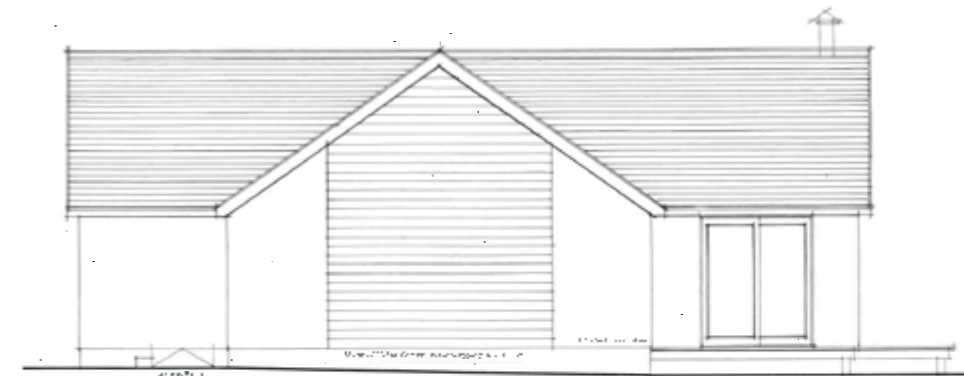
NB: Floor Plan shown is Plot 2



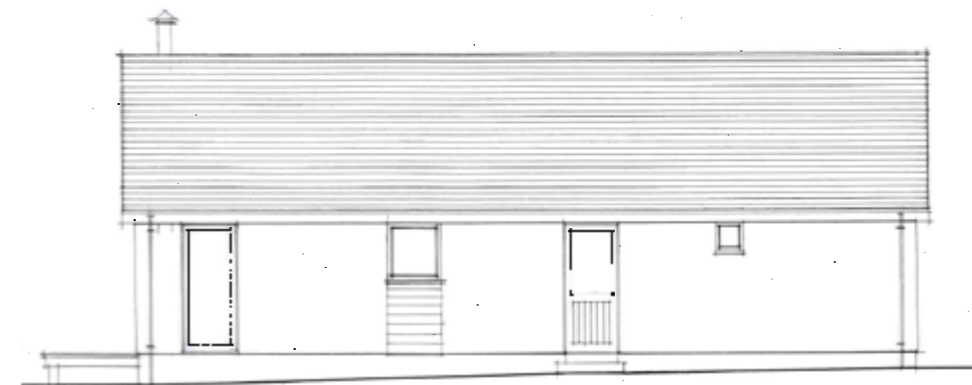
Front Elavation



Rear Elavation



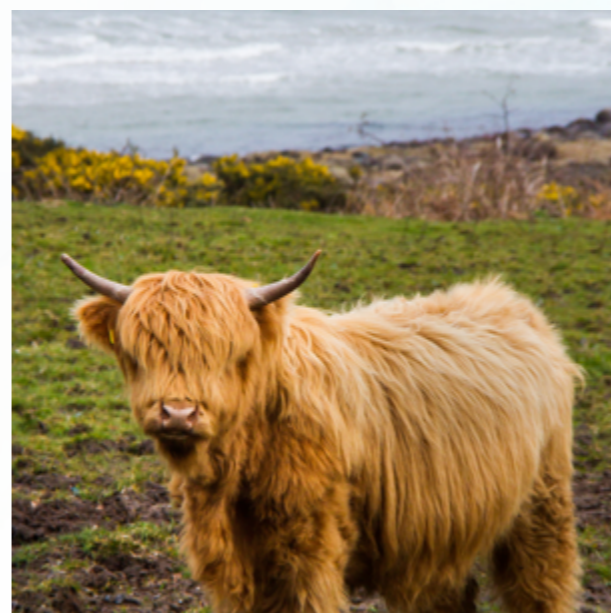
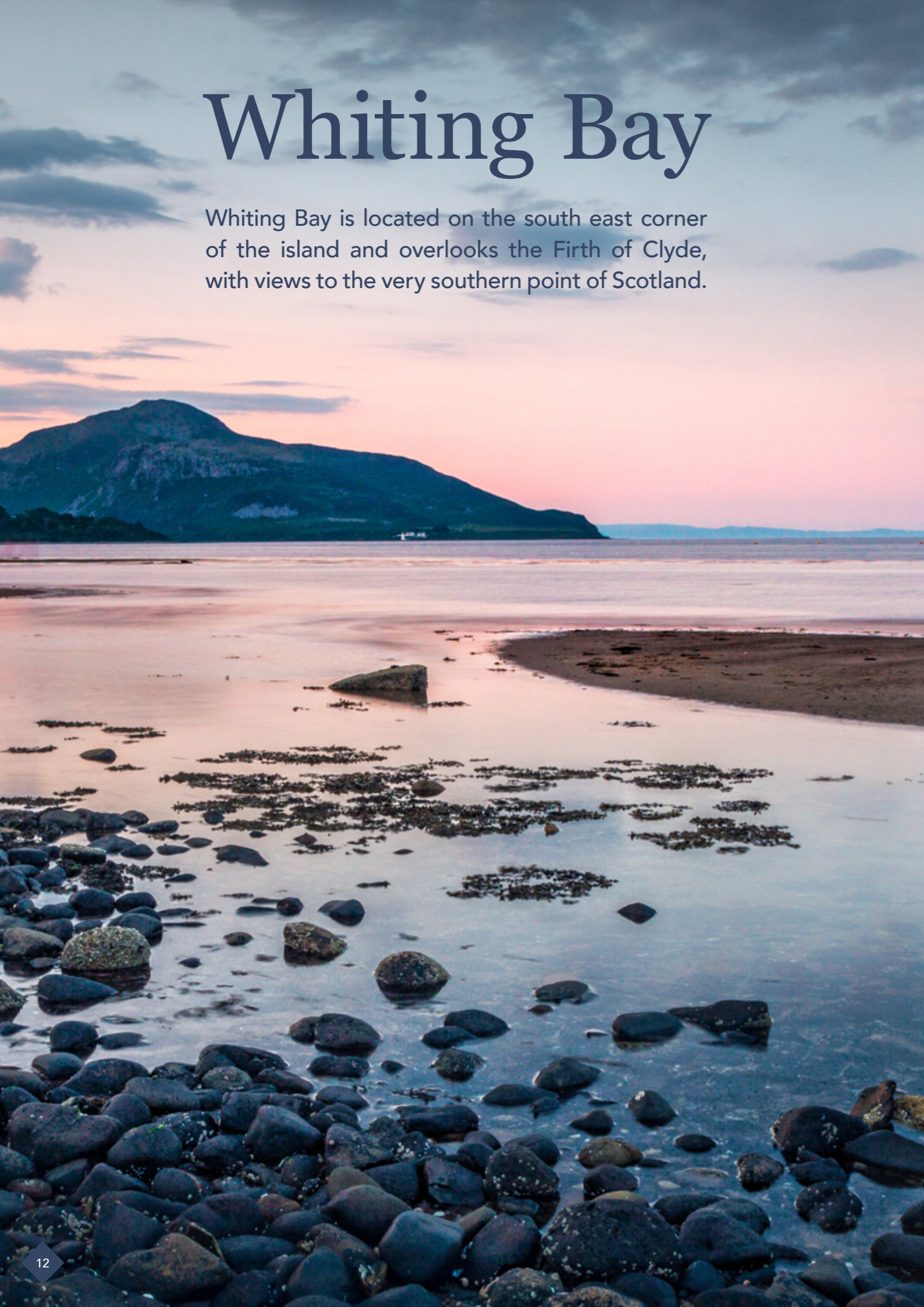
Side Elavation 1



Side Elavation 2

Whiting Bay

Whiting Bay is located on the south east corner of the island and overlooks the Firth of Clyde, with views to the very southern point of Scotland.



The village provides a newsagent, post office, pharmacy, two general food stores, café/bar, restaurant, bistro, hardware store and a farm shop. There is a craft outlet and art gallery, as well as a picturesque 18-hole golf course. Primary schooling is available in the village and secondary schooling is found at the High School in Lamlash. The surrounding area provides some of Arran's most scenic walks, not only along the shoreline, but also through the forest to Glenashdale Falls.

The Isle of Arran, approximately 167 square miles in area, is sometimes referred to as "Scotland in miniature", as it is divided into highland and lowland areas by the Highland Boundary Fault. The island is a popular destination for geologists, due to the substantial volcanic activity around 16 million years ago in the Tertiary period.

There are many stone circles and standing stones dating from Neolithic times, including those on Machrie Moor and the Giants Graves above Whiting Bay. Arran is approximately 60 miles in circumference and has some of the finest scenery in Scotland, with excellent walking, rambling and sea and trout fishing. Tourist attractions include Arran Aromatics, Arran Heritage Museum, Lochranza Distillery and Brodick Castle. There are seven golf courses on the island with these plots ideally positioned for easy access to Whiting Bay Golf Club.



Click here for
Glenashdale Falls video





A Brief History of Whiting Bay

Some say Whiting Bay was so called because of the amount of whiting fish caught, although a herring fishery also ran from here. At one point it had the longest pier in Scotland.

In Whiting Bay, the Giants' graves, neolithic tombs from 4000 years ago, lay in the forest along with Viking forts. At Kingscross Point, a dun or fortified farmstead has been found dating back the better part of two thousand years. Kingscross was used by Vikings as a settlement and burial site, and it has been suggested that the bay to the south was named after them, with "Viking Bay" later becoming corrupted to Whiting Bay.

In 1263, the Vikings of King Haco's fleet anchored before the Battle of Largs. Arran, according to Irish tradition, was also the home of Manannan mac Lir, the God of the Sea.

Feb 1307 – Kingscross also achieved a footnote in history when it became the place from which Robert the Bruce sailed for Ayrshire in February 1307, en-route to regaining control of his kingdom from the English. The pier in Whiting Bay was built in 1901 and became the longest pier in Scotland. It was dismantled in 1964.

The transformation of a group of tiny settlements into the Whiting Bay we see today, began with the establishment of a ferry to Saltcoats in 1790.

This was followed from the 1830s by the arrival of steamers from Glasgow and elsewhere in the Clyde Estuary. Clearance of Arran's inland crofting areas from the 1830s produced a demand for more accommodation on the coast, here and elsewhere on the island.

Of all Arran's villages, Whiting Bay seemed to attract the most "upmarket" clientele, and the result was a succession of fine villas being built along the landward side of the road running behind the bay. Meanwhile, a golf course was established in 1895, as were tennis courts, a bowling club and a putting green.

The building of a new pier in 1901, which allowed steamers to land passengers directly rather than via flit boats, only confirmed the growth of the village. During the war, a special boat called to take the lads off to war. A village hall was added in 1926.

As late as 1953, the main ferry serving Arran from the mainland called at Whiting Bay as well as Brodick, but the change to a Brodick-only service in 1954 led to a decline in the fortunes of Whiting Bay and the closure of the old steamer pier in 1957. Today, the village pier is a very modest affair, projecting out from the shore close to the line of shops backing onto the sea in the centre of the village.



Watermans

Price & Viewings

Please refer to our website www.watermans.co.uk
or call us on 07961 202906

Edinburgh

5-10 Dock Place, Leith, EH6 6LU
0131 467 5566

Glasgow

117 West George Street, G2 2LB
0141 430 7055

property@watermans.co.uk
www.watermans.co.uk



All Professional photography
conducted by Andy Surridge