



Sloane Avenue, SW3

£2,275 Per calendar month

A studio apartment in a portered mansion building in the heart of Chelsea. Stylish furniture and fantastic storage throughout makes this ideal for professional tenants wanting to be close to Sloane Square.

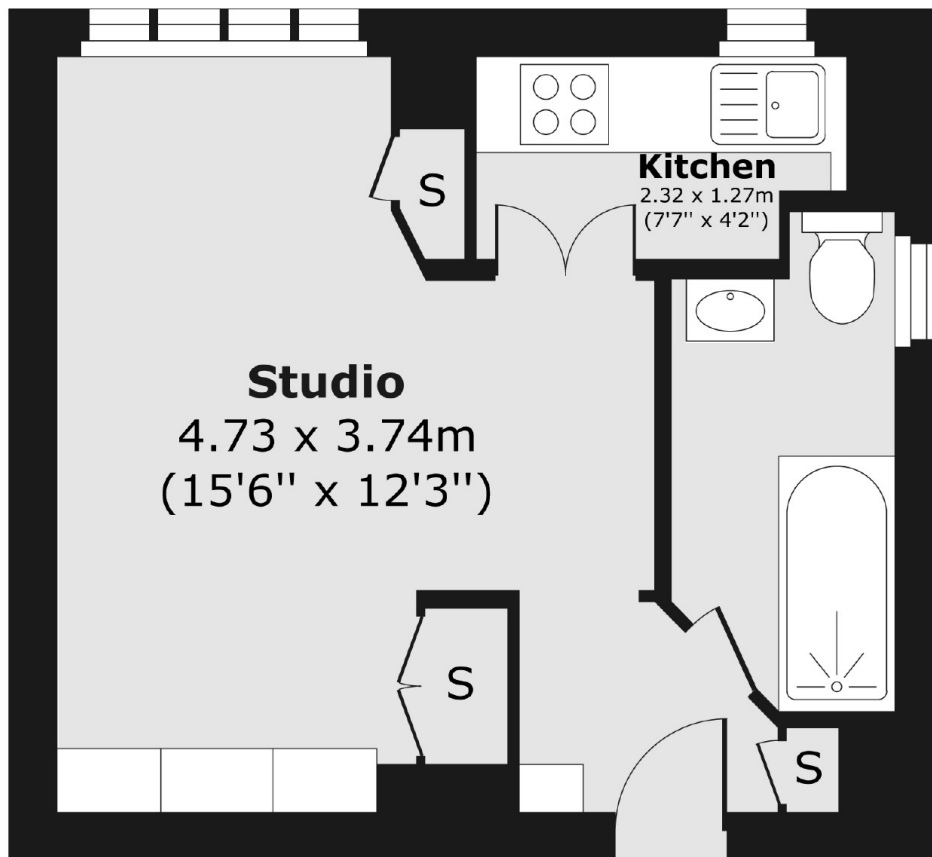
The apartment is just a few minutes walk from Kings Road, Walton Street, Sloane Street and Fulham Road offering a great variety of shops, bars and restaurants.

Features

- Studio Apartment
- Ground Floor
- Separate Kitchen
- Lift
- Modern Finish
- 24 Hour Porter

**Sloane Avenue,
London, SW3**

Raised Ground Floor



Total area (approx.) 24.27 sq. m (261 sq. ft)