

Towers Wills

Town & Country

📞 01935 577 032 | 01460 298 530 | ✉ info@towerswills.co.uk



5, Woodpecker Close, Yeovil, Somerset BA22 8FQ

£210,000

Towers Wills welcome to the market this immaculate, modern mid-terrace home, built in 2019 and benefitting from the remaining new build warranty. The property briefly comprises of; downstairs w.c, lounge, kitchen/diner, two double bedrooms, family shower room, driveway parking and a pleasant rear garden complete this ideal first time buy. Situated on the popular Augusta Park Estate, in a tucked away location.

Entrance Hall

Double glazed door to the front and radiator.

W.C

Double glazed window to the front, wash hand basin, w.c and radiator.

Lounge 4.62m x 2.83m – maximum measurements

Double glazed window to the front, radiator and under stairs cupboard.

Kitchen/Diner 2.66m x 3.81m – maximum measurements

Comprising of a range of wall, base and drawer units, work surfacing with one and a half bowl stainless steel sink drainer, double glazed French doors to the rear garden, radiator, space for fridge/freezer, space for dishwasher, space for washing machine, integrated electric hob with extractor over, integrated electric oven and gas combi central heating boiler.

First Floor Landing

Includes loft hatch.

Shower Room

Suite comprising low level shower cubicle, wash hand basin, w.c, extractor fan and heated towel rail.

Bedroom One 2.60m x 3.89m – maximum measurements

Two double glazed windows to the front, radiator and built-in cupboard.

Bedroom Two 2.51m x 3.89m – maximum measurements

Double glazed window to the rear and radiator.

Rear Garden

The rear garden is mainly laid to astroturf with a patio seating area, slate borders, outside tap and rear gated access.

Driveway Parking

To the front is driveway parking for one vehicle.

Key Features

- Popular Agusta Park Development
- Two Double Bedrooms
- Driveway
- Rear Garden
- Ideal First Time Buy/Buy to Let

Contact Us

Towers Wills Estate Agents - Yeovil

114, Hendford Hill
Yeovil

Somerset
BA202RF

T: 01935 577032

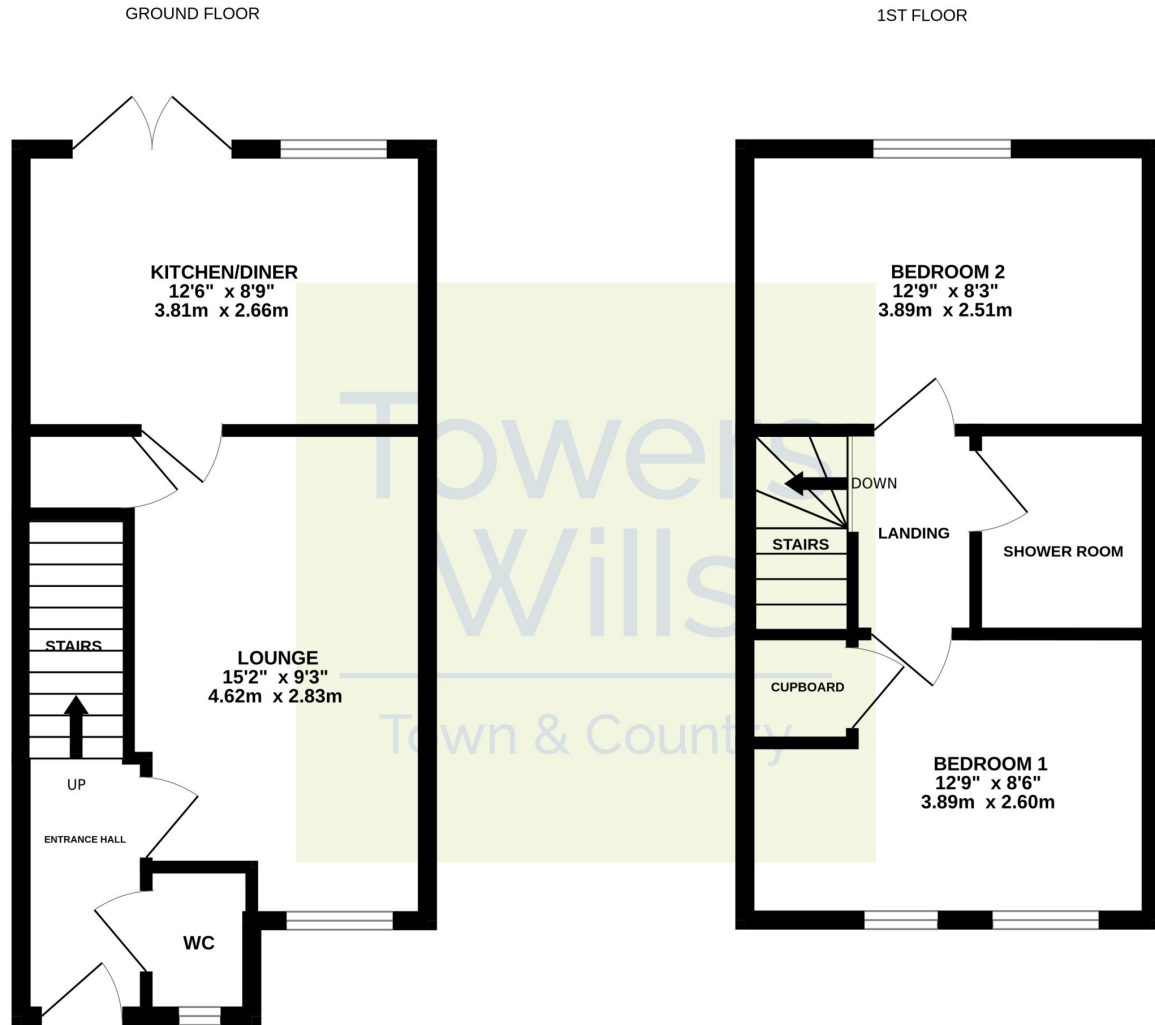
E: info@towerswills.co.uk

Energy Efficiency

Score	Energy rating	Current	Potential
92+	A		97 A
81-91	B	83 B	
69-80	C		
55-68	D		
39-54	E		
21-38	F		
1-20	G		



Floor Plan



Whilst every attempt has been made to ensure the accuracy of the floorplan contained here, measurements of doors, windows, rooms and any other items are approximate and no responsibility is taken for any error, omission or mis-statement. This plan is for illustrative purposes only and should be used as such by any prospective purchaser. The services, systems and appliances shown have not been tested and no guarantee as to their operability or efficiency can be given.
Made with Metropix ©2025

Please Note No tests have been undertaken of any of the services and any intending purchasers should satisfy themselves in this regard. Towers Wills Ltd for themselves and for the vendor of this property whose agents they are, give notice that, (i) these particulars do not constitute any part of an offer or contract, (ii) all statements contained within these particulars are made without responsibility on the part of Towers Wills or the vendor, (iii) whilst made in good faith, none of the statements contained within these particulars are to be relied upon as a statement of representation or fact, (iv) any intending purchaser must satisfy him/herself by inspection or otherwise as to the correctness of each of the statements contained within these particulars, (v) the vendor does not make or give either Towers Wills or any person in their employment any authority to make or give representation or warranty whatsoever in relation to this property.

Photographs / Floor Plans Photographs are reproduced for general information and it must not be inferred that any item is included for sale with this property. Please note floor plans are not to scale and are for identification purposes only. The photographs used in these particulars may have been taken with the use of a wide angle lens. If you have any queries as to the size of the accommodation or plot, please address these with the agent prior to making an appointment to view

Towers Wills

The White House, 114 Hendford Hill, Yeovil BA20 2RF

Yeovil 01935 577032 / South Petherton 01460 298530

info@towerswills.co.uk | www.towerswills.co.uk