



Kings Road, SW6

£1,350,000

A three double bedroom family home located on the borders of Fulham and Chelsea on the prestigious Kings Road, benefiting from a rare private internal garage.

Set back elegantly from the main road, this impressive home is arranged over three beautifully appointed floors.

The ground floor, spanning just under 20 feet, offers an impressive amount of living space. At the front, a formal reception room showcases high ceilings, elegant cornicing, and an original fireplace. The heart of the home features a spacious open-plan kitchen and dining area with a central island perfect for entertaining or relaxed family living. An additional W.C is found on this level. To the rear, a dedicated study provides an ideal workspace and offers direct access out to the garage.

The first floor comprises two generously sized bedrooms with built-in wardrobes and a contemporary family bathroom. From this level, there is access to a secluded roof terrace exceeding 500 sq ft, offering a wonderful private outdoor retreat. Occupying the entire top floor, the master suite boasts ample fitted storage and a large, luxurious en suite bathroom.

Ideally positioned on the prestigious Kings Road, between Britannia Road and Maxwell Road, this property boasts an exceptional location moments from an array of boutique shops, wine bars, pubs, and restaurants. Parsons Green and Fulham Broadway are both within easy walking distance, providing excellent transport links and local amenities. The open green spaces of Eel Brook Common are also just a short stroll away.

Features

- Three Double Bedrooms
- Private Roof Terrace
- Freehold Terraced Home
- Chain Free
- Private Garage
- Downstairs W.C.



Kings Road, SW6

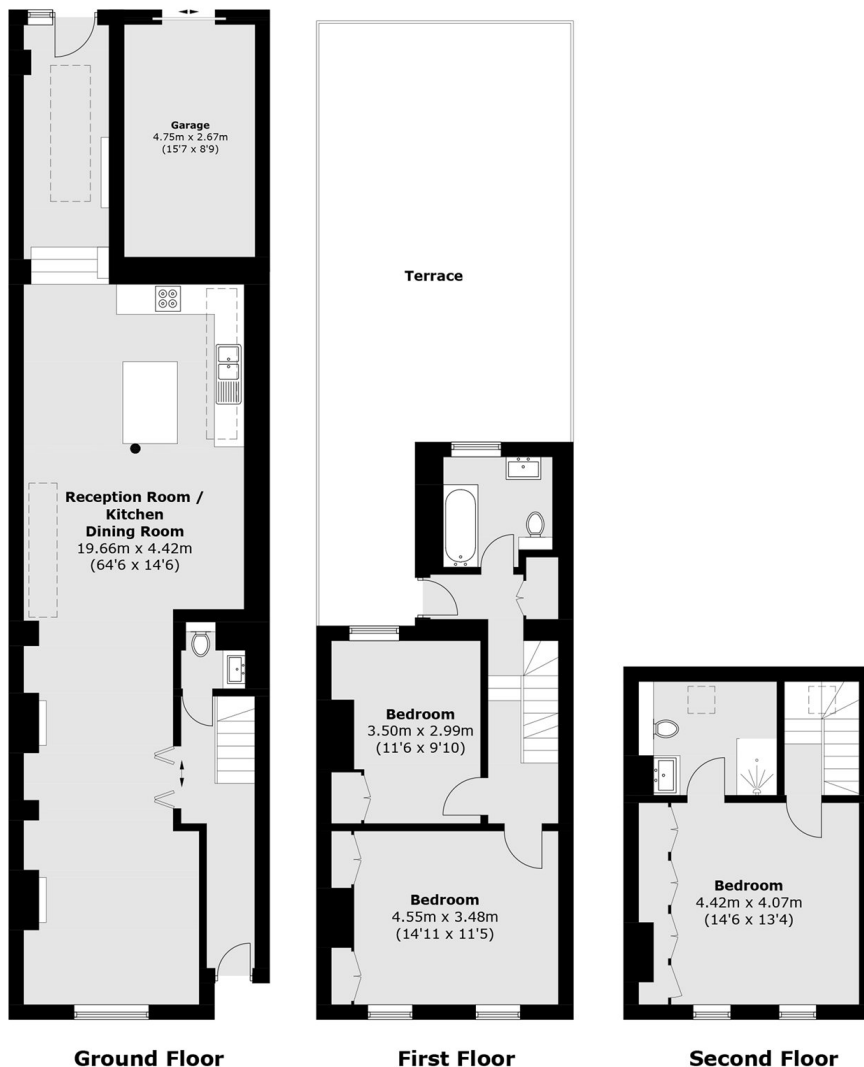
Set back elegantly from the main road, this impressive home is arranged over three beautifully appointed floors.

The ground floor, spanning just under 65 feet, offers an impressive amount of living space. At the front, a formal reception room showcases high ceilings, elegant cornicing, and an original fireplace. The heart of the home features a spacious open-plan kitchen and dining area with a central island perfect for entertaining or relaxed family living. An additional W.C is found on this level. To the rear, a dedicated study provides an ideal workspace and offers direct access out to the garage.

The first floor comprises two generously sized bedrooms with built and wardrobes and a contemporary family bathroom. From this level, there is access to a secluded roof terrace exceeding 500 sq ft, offering a wonderful private outdoor retreat. Occupying the entire top floor, the master suite boasts ample fitted storage and a large, luxurious en suite bathroom.



Kings Road, London, SW6



Ground Floor

First Floor

Second Floor

Total area (approx.): 145.3 sq. m (1,563.9 sq. ft)

Terrace: 49.5 sq. m (532.8 sq. ft)

Garage area (approx.): 12.6 sq. m (135.6 sq. ft)