



19a Stanley Street, Stamford

Stamford



## Key Features:

- Completely Refurbished 3 Bedroom Detached Home
- Stunning Open Plan Kitchen & Dining Room
- Wood Burning Stove in the Living Room
- Large Updated Shower Room
- Downstairs W/C
- Enclosed Rear Garden
- Single Garage & Off Road Parking
- Quiet Street in Town Centre Location

Step inside this beautifully refurbished three-bedroom detached home. The heart of the house is a stunning open plan kitchen and dining room, thoughtfully designed for both every-day living and effortless entertaining. Sleek cabinetry, integrated appliances, and generous work surfaces make this space a joy for keen cooks and casual hosts alike. The inviting living room benefits from a newly installed wood burning stove, perfect for cosy evenings with friends or family. Upstairs, three well-proportioned bedrooms offer peaceful retreats, while the large updated shower room brings a touch of luxury to your morning routine. A handy downstairs W/C adds extra convenience for busy households. Every detail has been considered in the recent refurbishment, from fresh décor to quality flooring, ensuring a move-in ready experience.

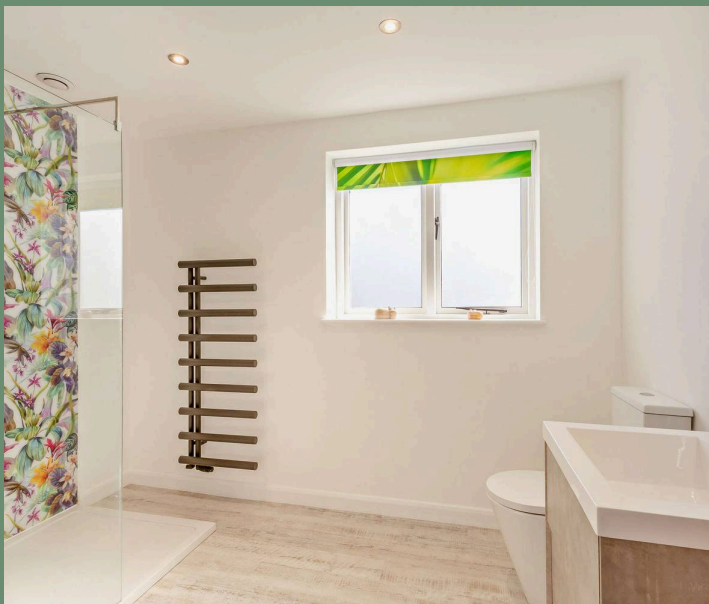


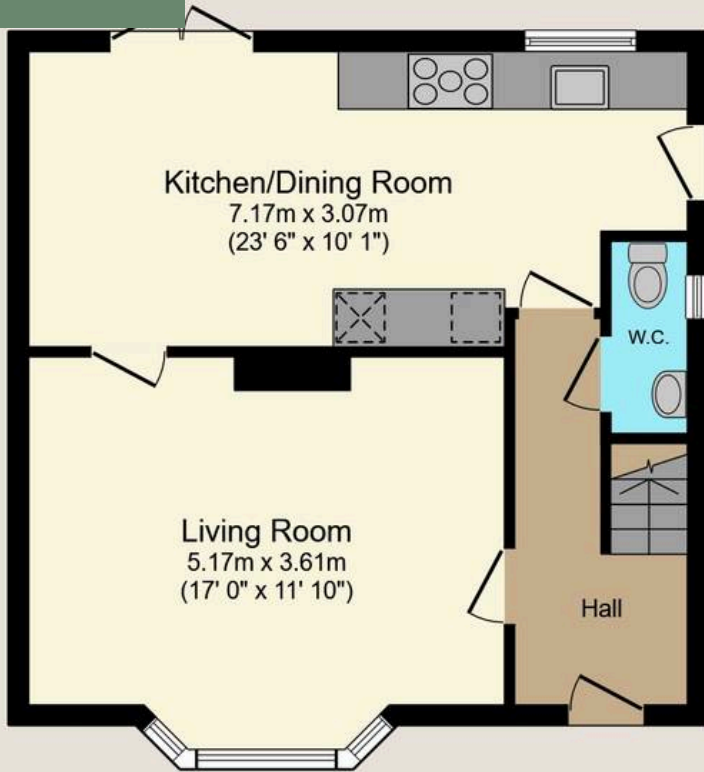




Tucked away on a quiet street just moments from the town centre, this home offers a rare combination of tranquillity and accessibility, placing shops, cafes, and amenities right on your doorstep.

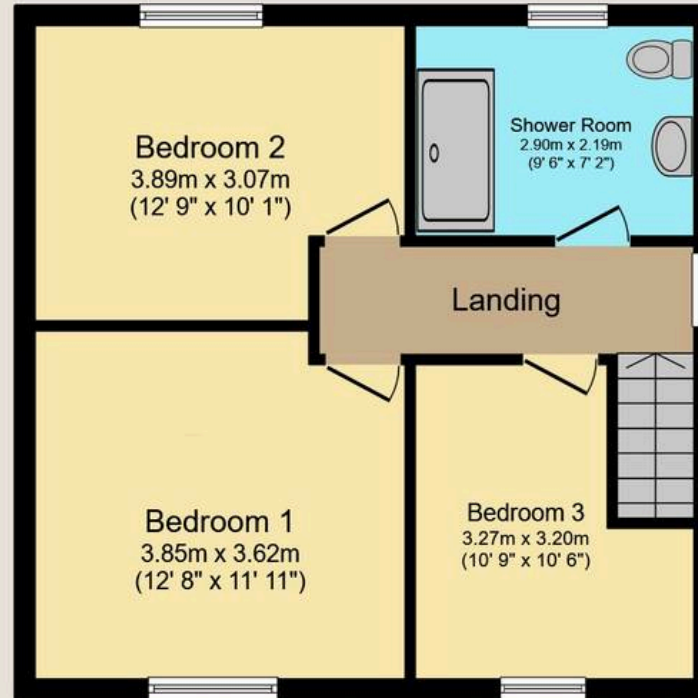
Step outside to discover an enclosed rear garden, providing a sunny oasis for relaxation or alfresco dining. Whether you are keen on manageable gardening, space for children or pets to roam, or simply want a peaceful spot to unwind, this versatile outdoor space caters to every lifestyle. The property also benefits from a single garage (perfect for storage or secure parking) and additional off-road parking, making life easy for families and visitors alike. With its blend of indoor comfort and outdoor appeal, this home is perfectly positioned for both relaxation and convenience, promising a wonderful setting for your next chapter





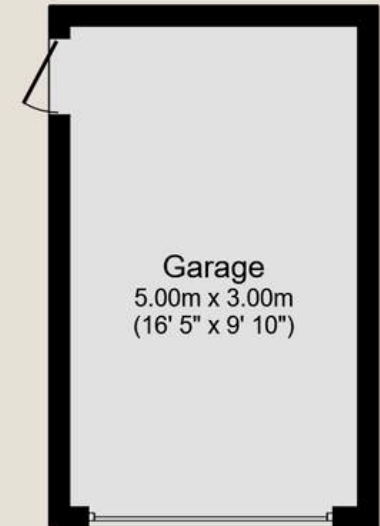
**Ground Floor**

Floor area 47.5 sq.m. (511 sq.ft.)



**First Floor**

Floor area 46.5 sq.m. (501 sq.ft.)



**Garage**

Floor area 15.0 sq.m. (161 sq.ft.)

**Total floor area: 109.0 sq.m. (1,173 sq.ft.)**

This floor plan is for illustrative purposes only. It is not drawn to scale. Any measurements, floor areas (including any total floor area), openings and orientations are approximate. No details are guaranteed, they cannot be relied upon for any purpose and do not form any part of any agreement. No liability is taken for any error, omission or misstatement. A party must rely upon its own inspection(s). Powered by [www.Propertybox.io](http://www.Propertybox.io)

