



Badric Court, Yelverton Road Battersea, London, SW11 3SR

£2,750 Per month

**TO LET**

**Gray's**  
RESIDENTIAL

- A well presented, split-level flat
- Three double bedrooms
- Separate kitchen
- A selection of shops, bars and restaurants
- Excellent condition throughout
- Spacious reception room
- Close to Clapham Junction Station
- Ideal for professional sharers

## THE PROPERTY

An exceptional split level, three double bedroom flat close to Battersea Park, is now on the market.

This property benefits from being in a good location and is offered in excellent overall condition.

This property comprises over two floors, a large living area with ample space for a dining table, separate kitchen and a downstairs W.C.

Upstairs has three double bedrooms and a bathroom suite.

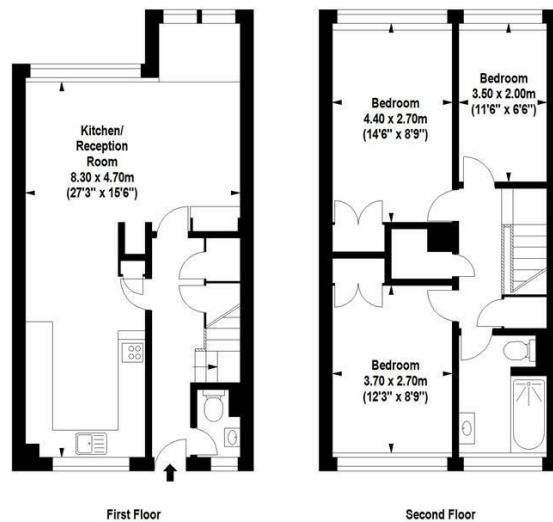
Battersea is a sought-after area, home to a vibrant mix of established residents, new families and young professionals.

Battersea is jam packed with numerous restaurants, cafes and bars feeding every range of taste available. The local clubs and bars give a very lively feel to the area in the evenings, whilst a good choice of comedy and theatre can be found at the Battersea Arts Centre.

The nearest station is Clapham Junction British Rail Station with services into Victoria, Waterloo and further on.

A large selection of day and night buses are also available to be caught in and out of the City centre. Many cycle routes are also available.

Available from the 01st August 2026, Furnished.



For Identification Purposes Only. Not To Scale. © www.totalvista.uk 2017

Baldric Court, SW11

Approx. Gross Internal Area  
85.47 Sq M - 920 Sq Ft

