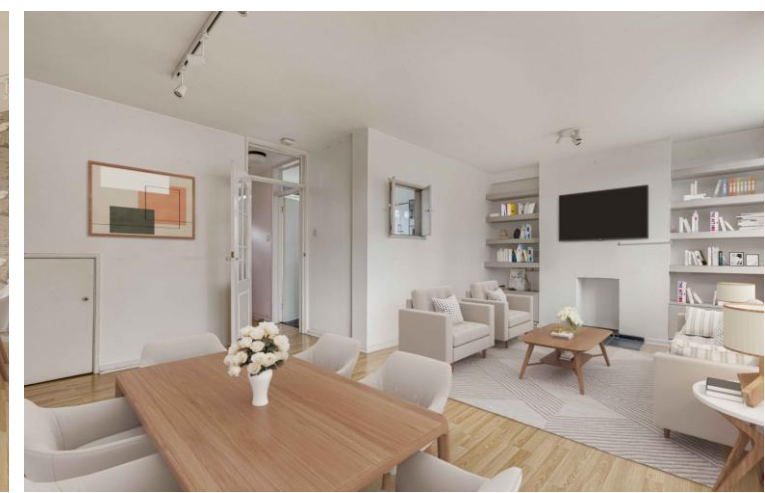




Shoreham Close  
London, SW18

CHESTERTONS





Situated on a quiet side street close to the Ram Quarter, this fantastic two-bedroom house offers well-presented living space throughout and is available chain free and vacant, making it an ideal purchase for first-time buyers, downsizers or investors alike.

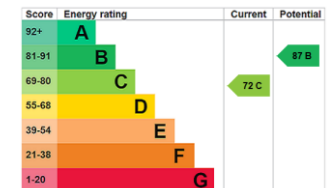
The property extends to approximately 798sqft and features a bright and generous sized reception room with ample space for both relaxing and dining, alongside a contemporary kitchen fitted with integrated appliances. Both bedrooms are well-proportioned and benefit from excellent built-in storage, while the house further benefits from off-street parking for two cars.

Ideally positioned for the excellent amenities, shops and transport links of Wandsworth, the property combines peaceful residential living with superb convenience.

Offered to the market with no onward chain, this is a fantastic opportunity to secure a move-in ready home in a sought-after location.

- Freehold house
- 798 sq. ft.
- Two bedrooms
- Off-road parking
- Chain free
- Good condition

Offers in excess of  
£600,000



**Tenure:** Freehold

**Local Authority:** London Borough of Wandsworth

**Council Tax Band:** D

*Chestertons Wandsworth Sales*

47 East Hill  
London  
SW18 2QE

wandsworth@chestertons.co.uk

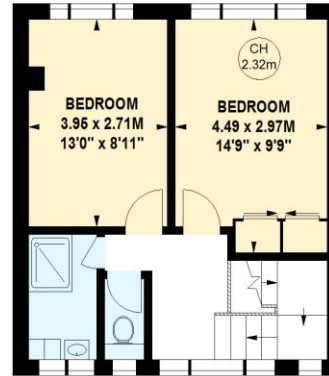
0208 104 7530

chestertons.co.uk

# Shoreham Close, SW18

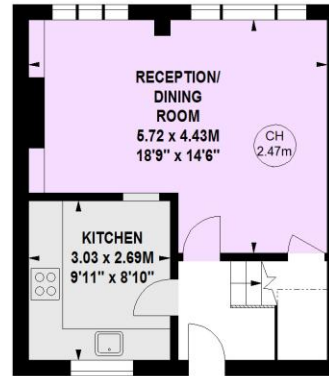
Approximate gross internal area  
74.13 sq m / 798 sq ft

Key :  
CH - Ceiling Height



399 sq ft

## First Floor



399 sq ft

## Ground Floor

This floor plan is a representation for guidance purposes only, not for valuation.  
Any figure is approximate and must not be relied on as a statement of fact.  
Copyright of Wyatt Dixon Homes

**WYATT DIXON  
HOMES**

Chesterton UK Services Limited trading as Chestertons for themselves and for the vendor of this property whose agents they are, give notice that (i) these particulars do not constitute any part of an offer or contract, (ii) all statements contained within these particulars are made without responsibility on the part of Chestertons or the vendor, (iii) whilst made in good faith, none of the statements contained within these particulars are to be relied upon as a statement or representation of fact, (iv) any intending purchasers must satisfy themselves by inspection or otherwise as to the correctness of each of the statements contained within these particulars, (v) the vendor does not make or give either Chestertons or any person in their employment any authority to make or give representation or warranty whatsoever in relation to this property. Wide angle lenses may be used. ©Copyright Chestertons | Chesterton UK Services Limited | Registered Office 5th Floor, The Lantern, 75 Hampstead Road, London, NW1 2PL Registered Company Number 05334580.



This paper is  
100% recyclable