



## 53 MALHOUSE DRIVE

GRAYS, RM17 5FG

£500,000  
FREEHOLD

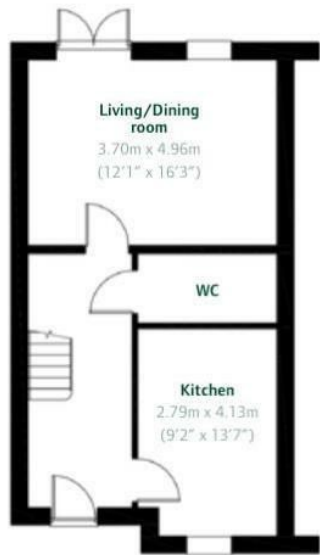
This beautifully presented four-bedroom, detached family home, built circa 2018–2019, offers bright, airy and modern living throughout. Designed with contemporary family life in mind, the property is flooded with natural light, creating a warm and welcoming atmosphere from the moment you step inside.

The accommodation comprises three generous double bedrooms and a well-proportioned single bedroom, currently utilised as a home office – ideal for flexible working. The home further benefits from integrated appliances in the kitchen, along with fitted wardrobes and ample storage cupboards throughout, ensuring both style and practicality.

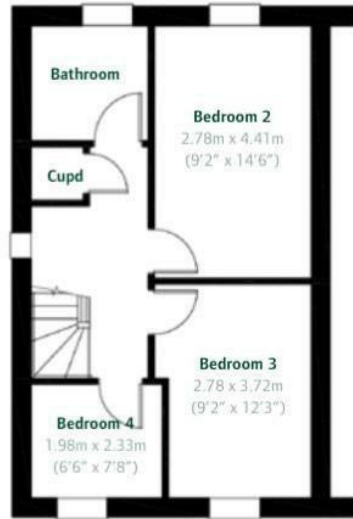
The property also boasts a spacious garden, perfect for entertaining family and friends, along with convenient side access — ideal for welcoming visitors and providing practical ease of access.

Conveniently located within walking distance of highly regarded schools and a range of local amenities, this exceptional home combines modern comfort with everyday convenience, making it perfect for growing families.

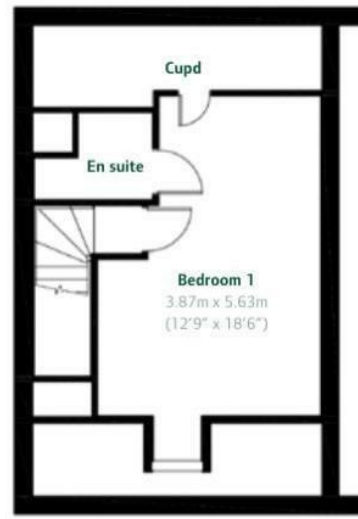
**tm**  
thomas marsh



Ground floor



First floor



Second floor



Energy Efficiency Rating		Current	Potential
Very energy efficient - lower running costs			
(92 plus) <b>A</b>			<b>95</b>
(81-91) <b>B</b>		<b>84</b>	
(69-80) <b>C</b>			
(55-68) <b>D</b>			
(39-54) <b>E</b>			
(21-38) <b>F</b>			
(1-20) <b>G</b>			
Not energy efficient - higher running costs			
<b>England &amp; Wales</b>		EU Directive 2002/91/EC	

Agents Note: Whilst every care has been taken to prepare these particulars, they are for guidance purposes only. All measurements are approximate and are for general guidance purposes only and whilst every care has been taken to ensure their accuracy, they should not be relied upon and potential buyers/tenants are advised to recheck the measurements

Grays Lettings  
47 Orsett Road  
Grays  
Essex  
RM17 5HJ

01375 370779  
lettings@thomas-marsh.com  
www.thomas-marsh.com

