



Park Street, W1K

£875 Per week

A fully furnished apartment with one double bedroom and a separate study/single bedroom on the top floor of this converted period building.

Set close to Oxford Street and Marble Arch station, this property is conveniently located within easy reach of the shops and restaurants of Mayfair.

Features

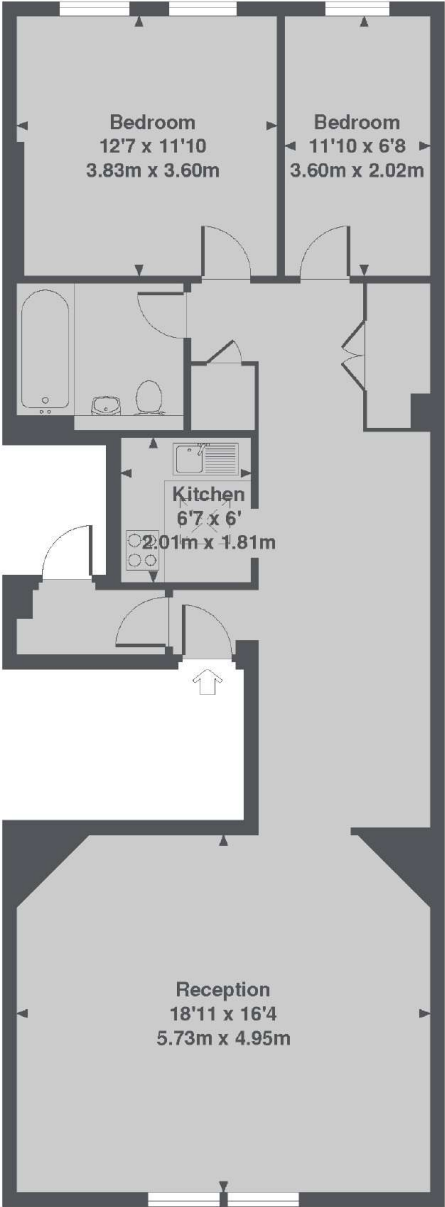
- Wooden Flooring
- Recently Renovated
- Top Floor
- Two Bedrooms
- Separate Kitchen
- Excellent Location



Park Street, W1K



Park Street,
London, W1K



Park Street, W1K
Total Approx. Floor area 880 Sq. Ft. (81.8 Sq. M.)



Wetherell
102 Mount Street
London
W1K 2TH
Lettings
020 7529 5588

Energy Rating: C. We aim to make our particulars both accurate and reliable. However they are not guaranteed; nor do they form part of an offer or contract. If you require clarification on any points then please contact us, especially if you're traveling some distance to view. Please note that appliances and heating systems have not been tested and therefore no warranties can be given as to their good working order.



dexters.co.uk