



📍 1 Millennium Close, Devizes, Wiltshire, SN10 3FH

🔗 Offers In Excess Of £400,000

A spacious and well-presented detached family home situated in a small close, boasting ample driveway parking, garage, en-suite to principal bedroom and good presentation throughout.

- Spacious detached family home
- 4-bedrooms
- Ample driveway parking for up to 5 vehicles
- Single garage
- Good presentation throughout
- Conservatory and utility room
- Small close location
- Large living room

🏠 Freehold

📊 EPC Rating C



A spacious and well presented four bedroom detached home, occupying a lovely position within a small and sought-after close on the edge of Devizes. The property offers light, airy accommodation throughout and generous living space, making it an ideal family home. The property also benefits from a newly installed boiler in 2024.

The ground floor is centred around an excellent reception room, providing a comfortable main living area with plenty of natural light. This is complemented by a separate dining room and a well-proportioned kitchen, creating a practical and versatile layout for both everyday living and entertaining. A conservatory to the rear adds further reception space and enjoys views over the garden, while a useful utility room and ground floor WC complete the downstairs accommodation.

Upstairs, the principal bedroom benefits from built-in storage and its own en-suite shower room. There are three further well-sized bedrooms along with a family bathroom.

Outside, the rear garden provides a pleasant and private space to enjoy. To the front and side of the property there is ample driveway parking for up to four vehicles, in addition to a single garage. Millennium Close is a quiet residential setting, yet conveniently placed for access into Devizes town centre, local schools and amenities.

Situation

The property enjoys a convenient location in a tucked away close of just a handful of homes that are set within walking distance of both the town and local schools. The historic market town of Devizes has much to offer with a wide range of facilities including a variety of shops, a leisure centre, schools for all ages, a cinema (currently under refurbishment), theatre, museum and thriving weekly market. The centres of Salisbury, Swindon, Bath, Chippenham and Marlborough are all within a thirty mile radius.

Property information

We are advised all mains services are connected.

Tenure: Freehold

Council tax band: E

EPC rating: C



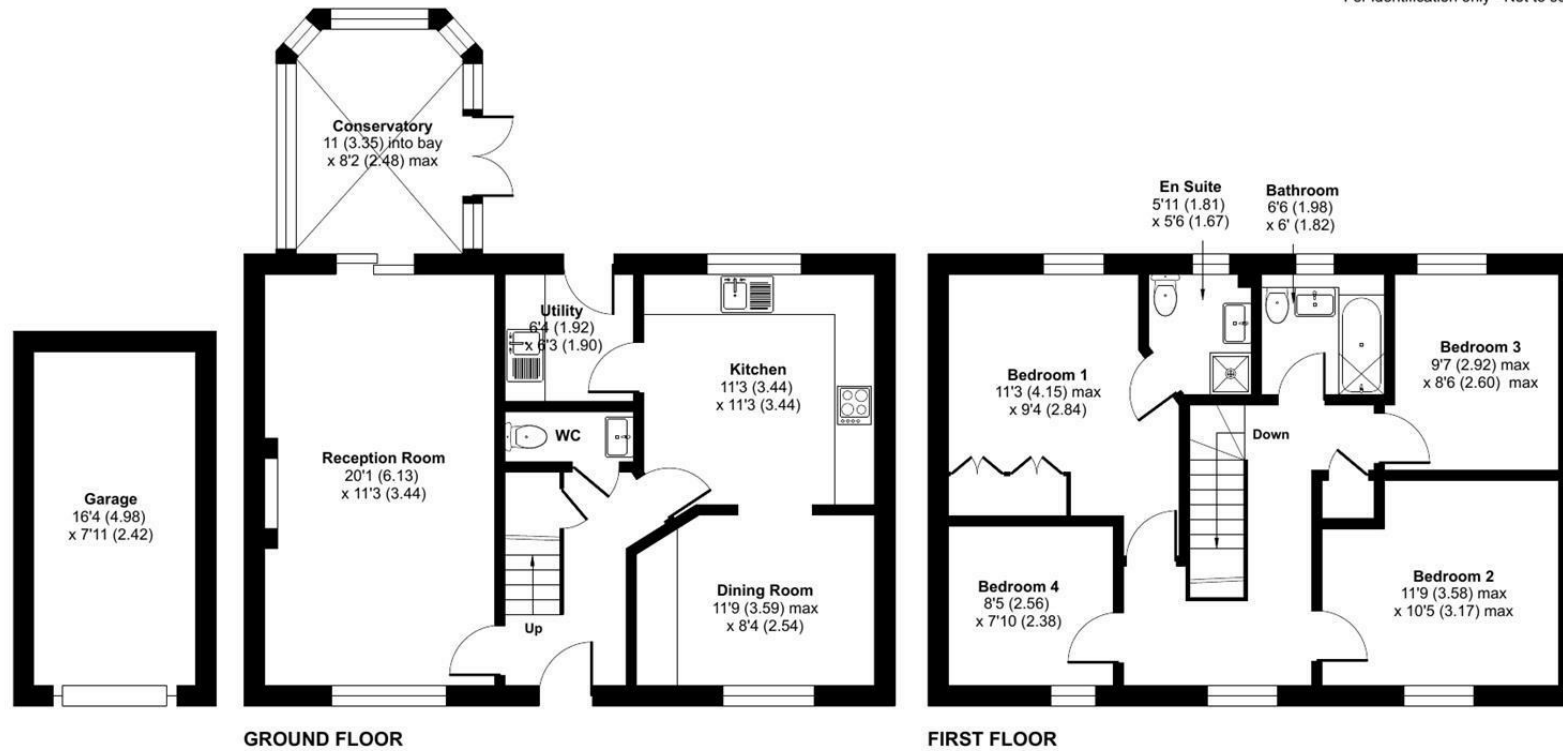
Millennium Close, Devizes, SN10

Approximate Area = 1296 sq ft / 120.4 sq m

Garage = 130 sq ft / 12 sq m

Total = 1426 sq ft / 132.4 sq m

For identification only - Not to scale



 Floor plan produced in accordance with RICS Property Measurement 2nd Edition, Incorporating International Property Measurement Standards (IPMS2 Residential). © ncthemcom 2026. Produced for Strakers. REF: 1404490

Disclaimer These particulars, whilst believed to be accurate are set out as a general outline only for guidance and do not constitute any part of an offer or contract. Intending purchasers should not rely on them as statements of representation of fact, but must satisfy themselves by inspection or otherwise as to their accuracy. No person in this firm's employment has the authority to make or give any representation or warranty in respect of the property. All measurements and distances are approximate only. Your home is at risk if you do not keep up repayments on a mortgage or other loan secured on it.