



Chippenham Road, W9

£495,000

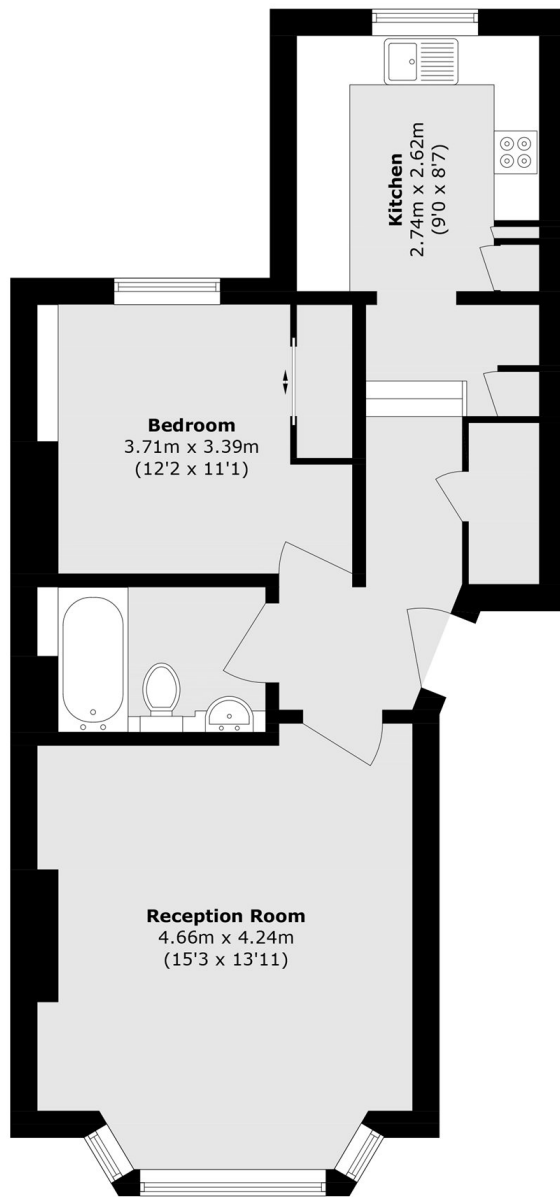
A raised ground floor flat set in a charming period conversion. The property comes complete with a sizable reception room with bay window, a double bedroom with built-in storage, separate kitchen, ample storage and high ceilings.

Chippenham Road is less than half a mile from multiple transport links to central London and close to Portobello, Little Venice and Paddington Recreation Ground. A short walk takes you to the shops and local amenities along Harrow Road and Elgin Avenue.

Features

- Raised Ground Floor Flat
- Separate Kitchen
- Ample Storage
- High Ceilings
- Share of Freehold
- Chain Free

Chippenham Road, Maida Vale, W9



Ground Floor

Total area (approx.): 53.6 sq. m (576.9 sq. ft)