



24, George Street,
Marylebone, W1U

£925 Per Week,

NAPIER WATT

T: 0207 935 0011

E: enquiries@napierwatt.co.uk

W: napierwatt.co.uk

35 Berkeley Square, Mayfair, London, W1J 5BF







Description

A beautifully presented split-level two-bedroom apartment, ideally situated just moments from Marylebone High Street. The ground floor features a spacious open-plan kitchen and reception room, complete with wood flooring and high ceilings, creating a bright and inviting living space. There is also a separate sitting area, which offers flexibility to be used as a third bedroom or home office, along with a convenient guest WC. On the lower ground floor, the property offers two well-proportioned double bedrooms. The principal bedroom benefits from an en suite shower room, while a separate modern family bathroom serves the second bedroom.

2 Bedrooms : 2 Bathrooms : En Suite Shower Room : Guest WC : 2 Reception Rooms : EPC C ; Council Tax Band F

Key Features

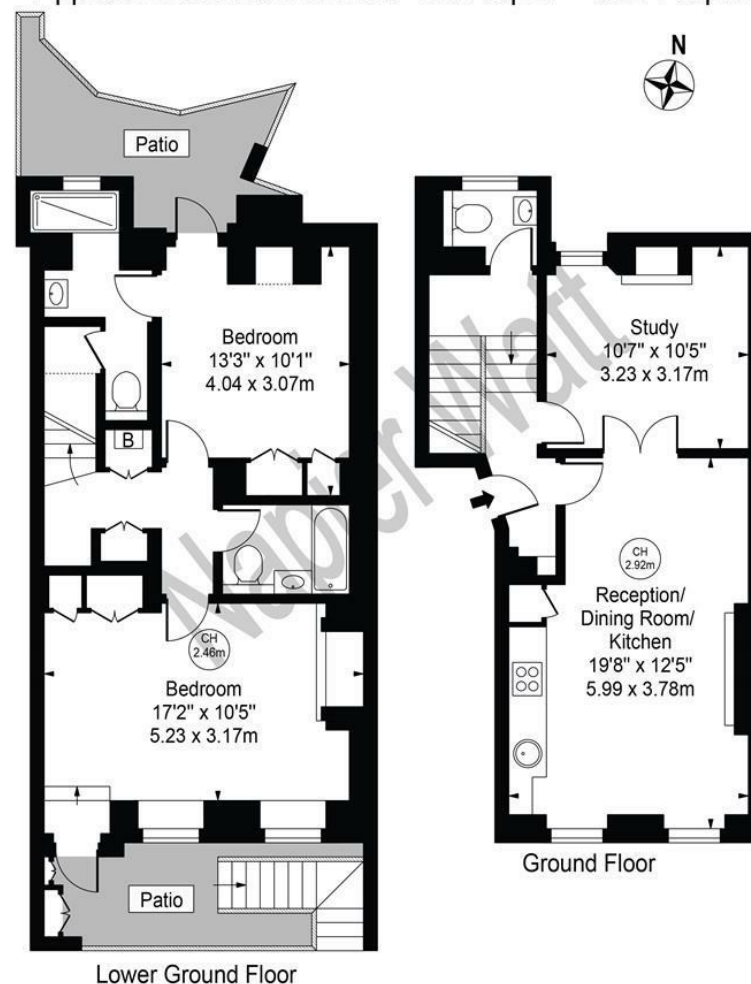
- NEXT TO MANCHESTER SQUARE
- TWO MIN FROM SELFRIDGES
- PERIOD FEATURES
- BY THE WALLACE COLLECTION
- HIGH CEILINGS

Terms

Fees & Charges: Tenancies exceeding £100,000 Per annum £480 inc VAT, Tenancies where a company is a tenant £480 Inc VAT.

George Street

Approx. Gross Internal Area 952 Sq Ft - 88.44 Sq M



For Illustration Purposes Only - Not To Scale

This floor plan should be used as a general outline for guidance only and does not constitute in whole or in part an offer or contract. Any intending purchaser or lessee should satisfy themselves by inspection, searches, enquiries and full survey as to the correctness of each statement. Any areas, measurements or distances quoted are approximate and should not be used to value a property or be the basis of any sale or let.

IMPORTANT: We would inform prospective purchasers that these sales particulars have been prepared as a general guide only. A detailed survey has not been carried out, nor the services, appliances and fittings tested. Room sizes should not be relied upon for furnishing purposes and are approximate. If floor plans are included, they are for guidance only and illustration purposes only and may not be to scale. If there are any important matters likely to affect your decision to buy, please contact us before viewing the property.